



Because the little things matter

Enjoy an ABI life.

HOLIDAY HOMES | 2020 COLLECTION







A scenic landscape featuring a wooden cabin nestled among tall evergreen trees. In the foreground, a woman sits on a wooden bench, accompanied by a small white dog. The scene is bathed in warm, golden light, suggesting a late afternoon or early morning setting. The overall atmosphere is peaceful and inviting, highlighting the natural beauty of the location.

# GREAT BRITAIN'S PLAYGROUND IS YOURS TO EXPLORE

Step out of an ABI and into a playground packed with adventure. Amble over rugged moors. Bask in the sun on a sandy shore. Cycle up hill and down dale. Explore chocolate box villages and market towns. There's no end of fun to enjoy when you're an ABI owner.

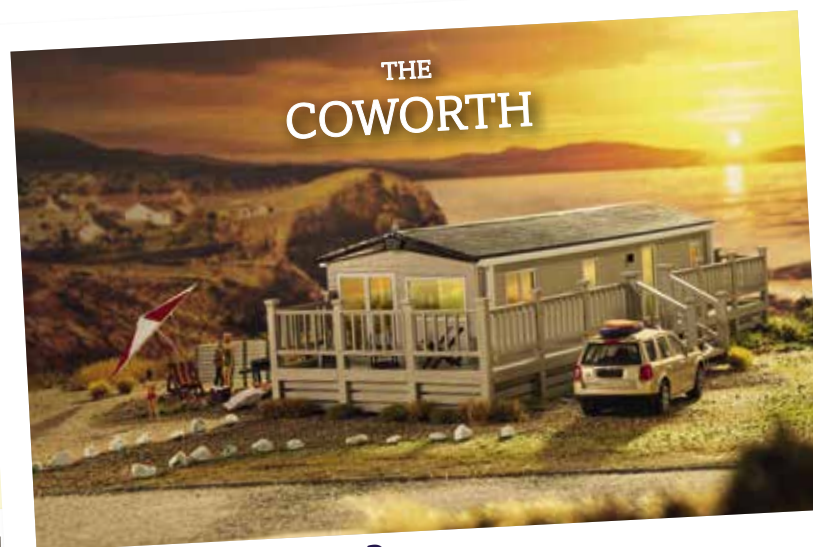
Each holiday home we make not only captures a little bit of Great Britain's character, it's also your ticket to some very British adventures.

WELCOME TO THE 2020 COLLECTION



# CONTENTS

The ABI life is for everyone	6-7
Devoted to getting every step right	8-9
The little things that matter	10-11
Small details make all the difference	12-13
Our 2020 Collection	14-79
Key features & specifications	80-83



THE  
COWORTH

Designed to help you unwind Page 14



THE  
BLENHEIM

An understated yet unique retreat Page 32



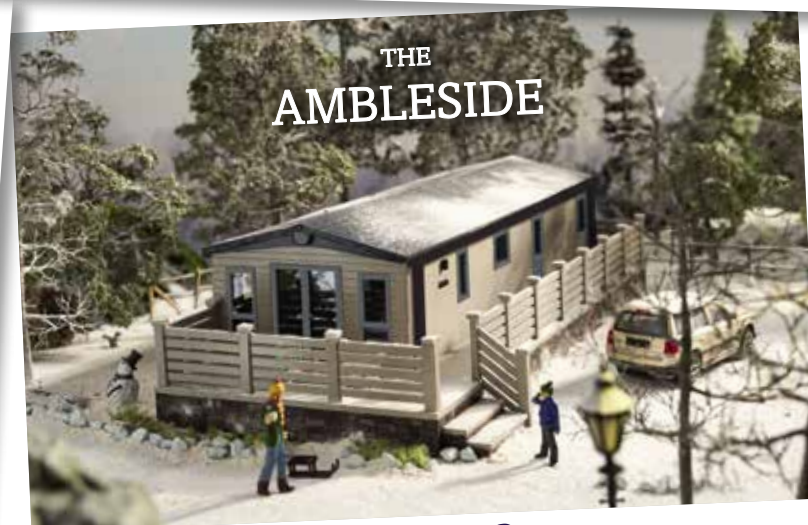
THE  
BEVERLEY

A contemporary hideaway Page 38



THE  
LANGDALE

Seriously sleek and far from ordinary Page 56



THE  
AMBLESIDE

Make every inch of your break beautiful Page 62





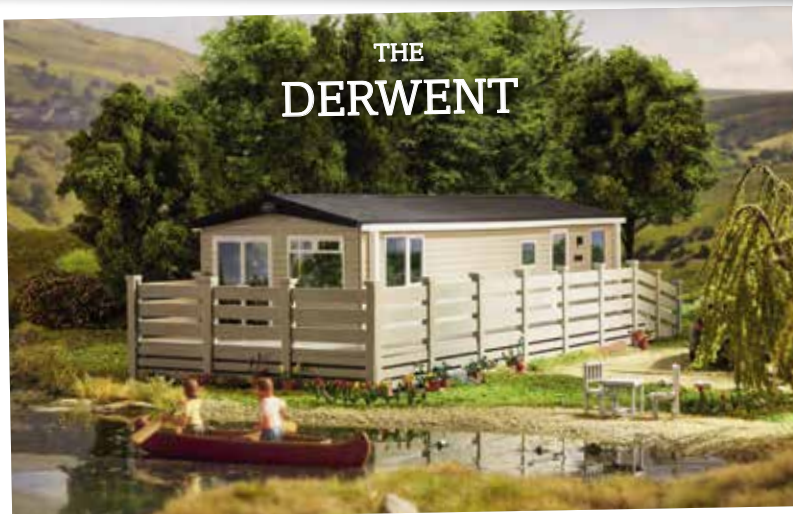
## THE RYEDALE

Let the good times flow Page 20



## THE WIMBLEDON

For those who like to take it slow Page 26



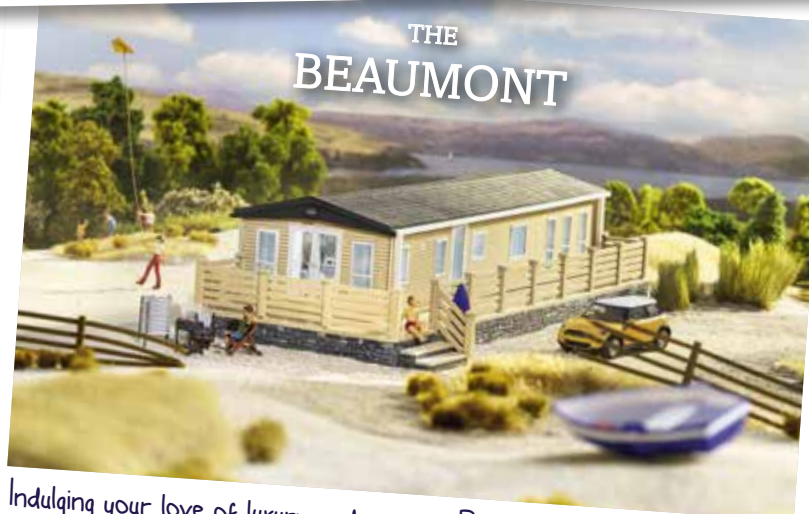
## THE DERWENT

A retreat where everybody can relax Page 44



## THE WINDERMERE

For those who long for the rural life Page 50



## THE BEAUMONT

Indulging your love of luxury and nature Page 68



## THE WESTWOOD

A sumptuous sanctuary for relaxation Page 74





# THE ABI LIFE IS FOR EVERYONE

From English views with a brew and Scottish sunsets, to Welsh walks and Irish beaches, here are just a few of the moments ABI owners have loved. (Thanks for sharing, guys – we love these moments too.)

A collage of images showing various home improvement projects and lifestyle scenes. The word "Enjoy" is written in large, white, cursive script across the center. The collage includes: a person sitting on a green cushion reading a magazine; a sunset over a body of water; a person in a dark sweater standing in a room; a white porch railing; a wooden deck with a railing; a sunset over a body of water; a person holding a small dog; a modern house with a large window; and a house with a gabled roof.







# DEVOTED TO GETTING EVERY STEP RIGHT

Holiday homes are the place where lasting memories are made, so it's important that ours are built to last. That's why we devote so much attention to every detail that makes up your ABI.

From first concepts to final quality checks, our dedicated team of talented in-house designers, experienced engineers, expert draughtsmen, highly skilled craftsmen and meticulous quality inspectors give every element of your ABI their all.



## INSPIRATION AND DESIGN

Our in-house designers take the latest trends, technical innovations and ABI owners' feedback to create concepts and 3D virtual models for each holiday home's colour scheme, layout and styling.



## PROTOTYPE BUILD

Our experienced engineers faithfully create each virtual model, from its layout to the fixtures, in a full-size prototype so that we can check and perfect every detail before it goes into production.



## TECHNICAL DETAILING

After the prototype has been tried, tested and finalised, our expert draughtsmen translate each detail into precise drawings, ensuring your ABI is built to our exacting standards.





## NO MATTER WHICH ABI YOU CHOOSE, ALL OF THESE FEATURES ARE INCLUDED AS STANDARD:

- ✓ 100mm insulation in roof
- ✓ Upgraded external walls with 50mm insulation (except The Coworth and The Ryedale)
- ✓ Domestic gutters and downpipes
- ✓ Domestic style internal doors
- ✓ Domestic mattresses (3 times more filling and more durable covering)
- ✓ Domestic twin cavity oven with electric ignition (range oven in The Westwood)
- ✓ Electric fire
- ✓ Thermostatic shower mixer valve
- ✓ Underlay in carpeted area (except The Coworth bedrooms)
- ✓ Low energy bulbs throughout and LED bulbs in all spotlights
- ✓ Lined curtains (except The Coworth)
- ✓ Pull out bed in lounge
- ✓ Steel pantile roof
- ✓ 10 year smoke detector
- ✓ Carbon monoxide detector x2
- ✓ Fire extinguisher
- ✓ Escape windows

**You can make your ABI even more special by adding further options, see pages 80 & 81.**



### PRODUCTION BUILD

Our highly skilled, passionate craftsmen are the ones who bring these beautiful drawings to life. They make every holiday home by hand, in our factory in East Yorkshire.



### QUALITY INSPECTION

Before you can start enjoying your holiday home, our quality inspectors will put it through some rigorous tests. Only if it meets our exceptional standards does it get the ABI seal of approval.



# THE LITTLE THINGS THAT MATTER



## ③ State of the art extras

The optional extras we offer are designed to make modern breaks hassle free. There are USB sockets for easy charging, Bluetooth sound systems for playing your favourite music and many more options to choose from.

An ABI is a truly unique kind of holiday home. That's because the little things matter so much to us. We think about every aspect of an ABI in terms of your stay, then we add the details that we believe will make your holiday home and time away extra special.

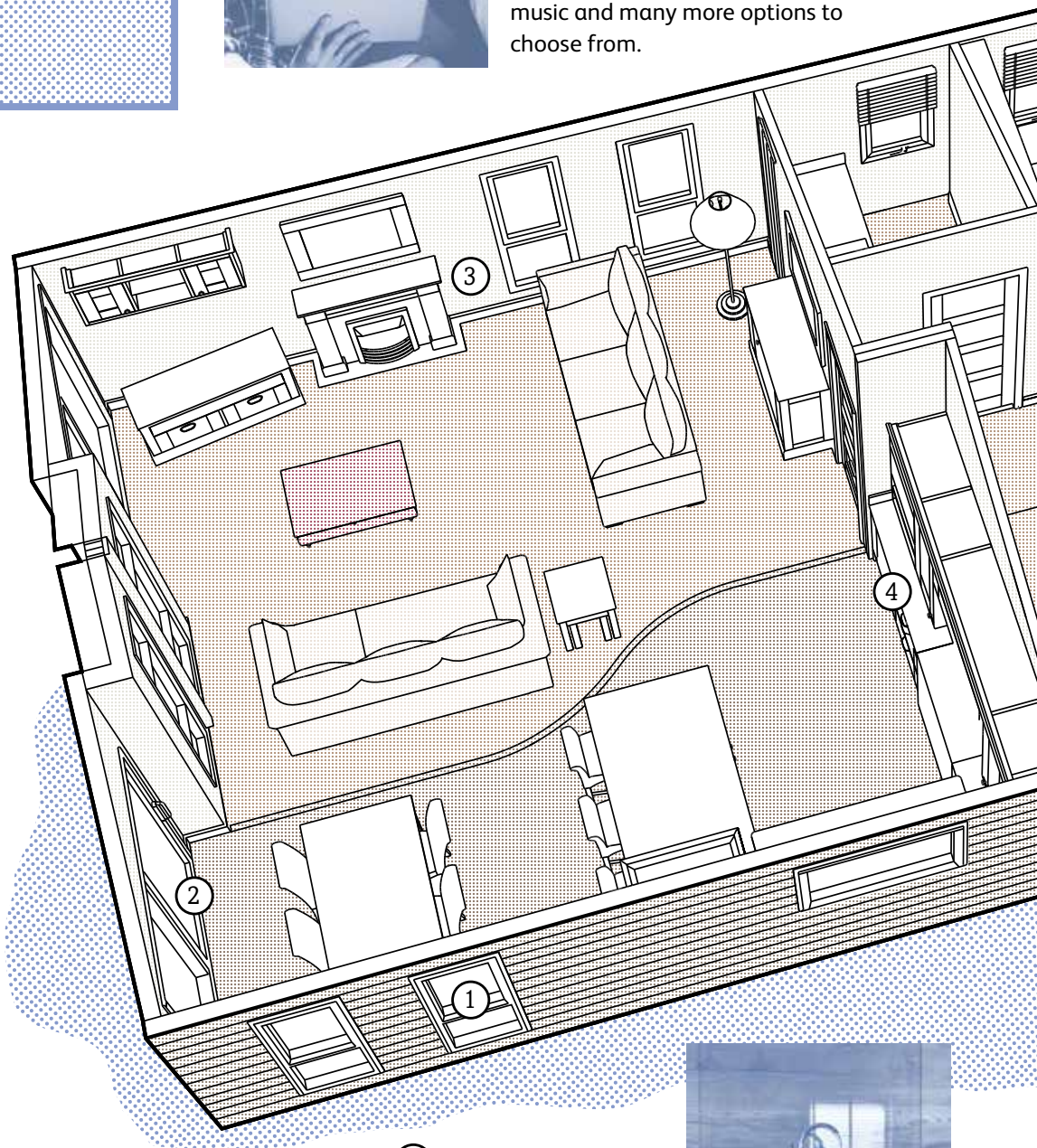
From extra insulation that means you can get away whatever the weather, to beds that are so comfy you'll wake up fresher, we've thought of everything when it comes to including features that'll make a real difference to your break.

## ① Cosy all year round

Summer isn't the only season you can enjoy in our holiday homes. With options like 'Low E' PVCu thermaglass double glazing, 100mm roof insulation, central heating and electric fires to keep you warm and toasty in your ABI, you can even get away when it's cold.

## ② Bring the outdoors in

Make the most of your surroundings, even when you're inside. Patio doors, panoramic glass fronts and large windows all mean you can still enjoy the Great British countryside from the comfort of your ABI.



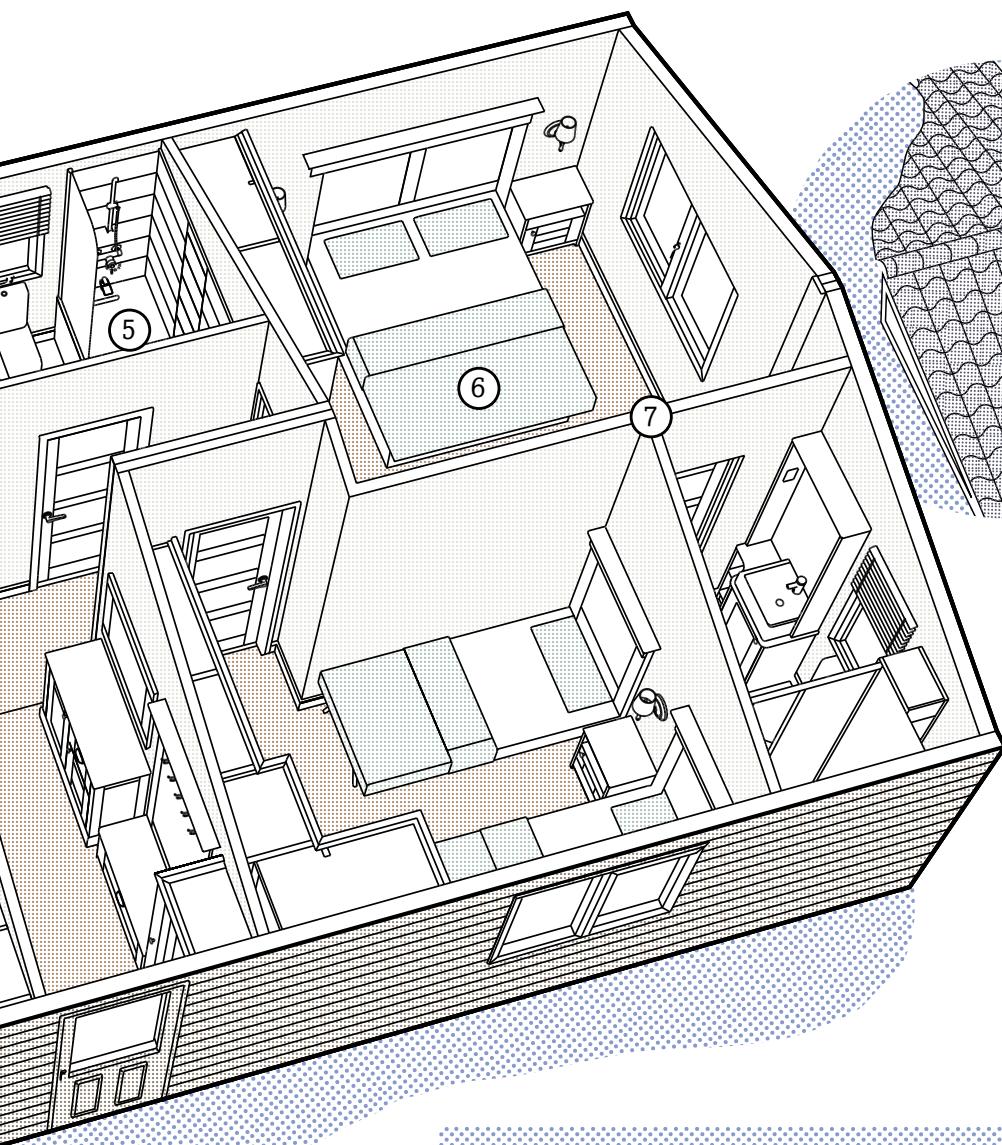
## ④ Thoughtful design

You might be on holiday, but day-to-day life must go on. Our well-planned kitchens with full height splashbacks and domestic fittings, plus smart storage solutions, like walk-in wardrobes and handy hooks, mean even everyday life is a joy.



See page 83 for warranty information

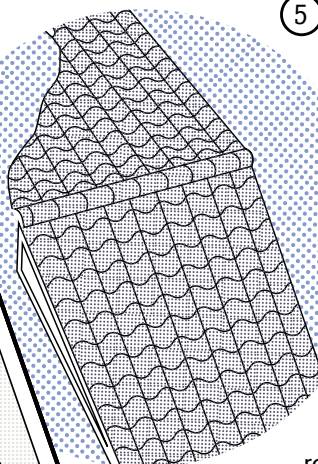




### 5 Environmentally friendly

Time away in your ABI isn't all that'll make you feel good.

Because every ABI comes with energy and water saving features, it's kinder to the environment, making it easier for you to relax and enjoy some peace of mind while you're away.

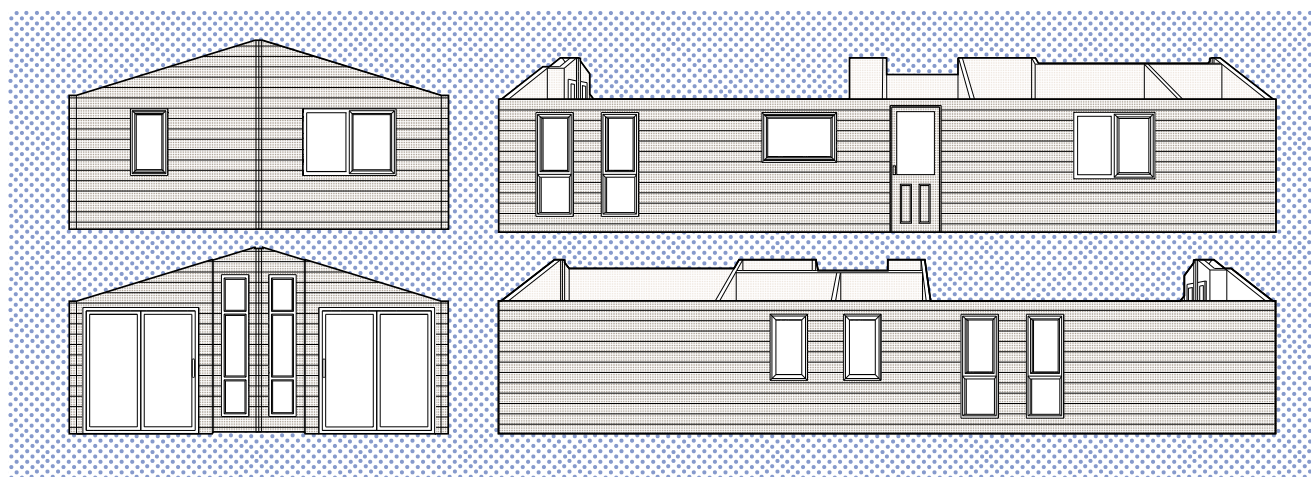


### 6 A good night's sleep

To make sure you wake up refreshed and ready to enjoy the day, every one of our mattresses is of a domestic standard. And for those who really cherish their beauty sleep, we also offer a deluxe pocket sprung upgrade.

### 7 Just like home

It's always nice to get away. It's even nicer having all the comfort of home while you're on your holidays. Details like high quality furniture and fittings, 7ft high walls and vaulted ceilings, carpet underlay and soft closers make every ABI feel as spacious and homely as home.





# SMALL DETAILS MAKE ALL THE DIFFERENCE

Small details fascinate us. We have a real appreciation for all the care and attention that goes into making even the tiniest thing perfect. Just like the model maker who painstakingly recreated each ABI in miniature, every millimetre matters to us.

Whether it's extra thick roof insulation or sockets with USB ports, there isn't a single bit of your holiday home that we haven't fine-tuned for your enjoyment.





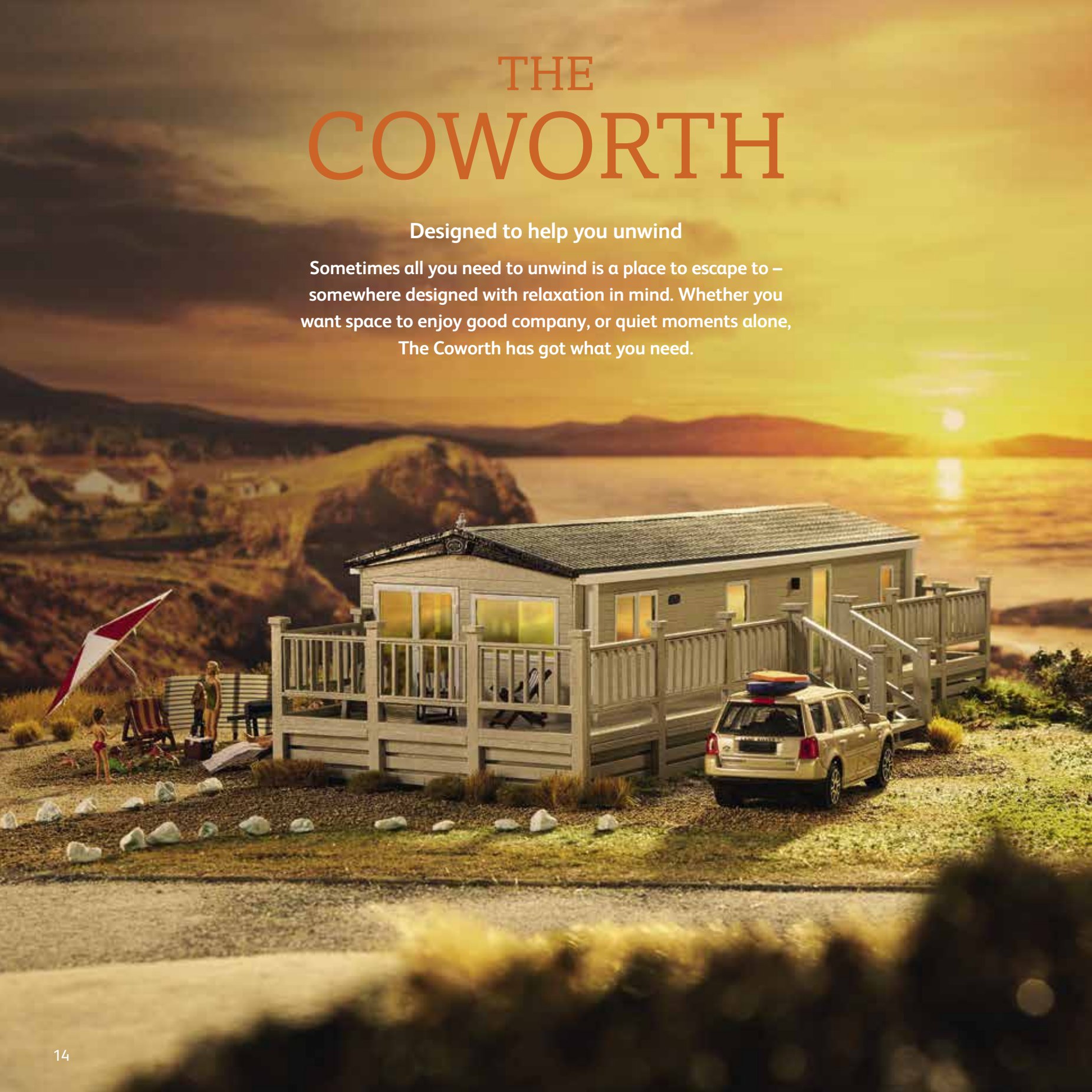




# THE COWORTH

Designed to help you unwind

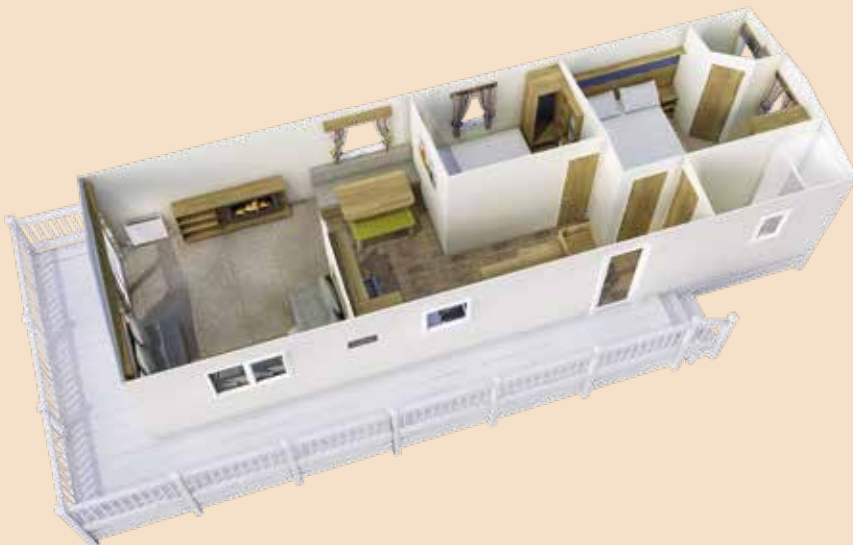
Sometimes all you need to unwind is a place to escape to – somewhere designed with relaxation in mind. Whether you want space to enjoy good company, or quiet moments alone, The Coworth has got what you need.







Shows Deluxe Pack, see page 19



## Highlights

- Brand new model for 2020
- Spacious family holiday home
- 2'6" single beds in twin room (12ft 2 bedroom models only)
- Option to upgrade to Deluxe Pack luxury

**360°** To take an interactive virtual tour visit [www.abiuk.co.uk](http://www.abiuk.co.uk)





Shows Deluxe Pack, see page 19



Shows Deluxe Pack, see page 19



Shows Deluxe Pack, see page 19





Shows Deluxe Pack, see page 19



Shows Deluxe Pack, see page 19







Shows Deluxe Pack, see page 19



Shows Deluxe Pack, see page 19



Shows Deluxe Pack, see page 19



# The Coworth

Choose your perfect escape from 7 different models. No matter which one you pick, rest assured it'll have everything you need for a thoroughly enjoyable break.



**FACTORY  
Approved**



For further information and to take an interactive virtual tour of The Coworth visit [www.abiuk.co.uk](http://www.abiuk.co.uk)

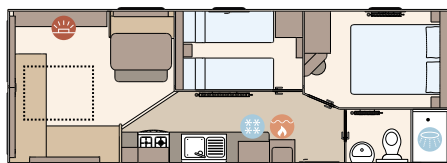
## All this included

- ✓ Matt finish Champagne aluminium cladding
- ✓ Electric fire
- ✓ Fixed dinette seating
- ✓ Separate en suite (32ft x 12ft models up)
- ✓ King size bed in master bedroom (except all 10ft models and 32ft x 12ft 2 bedroom model)
- ✓ Carpet underlay in lounge
- ✓ Scatter cushions in lounge
- ✓ 2'6" single beds in twin room (12ft 2 bedroom models only)

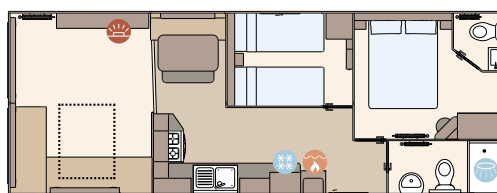
## Add any of these

- ☐ Deluxe Pack (available on 12ft models)
- ☐ Pre-galvanised or fully galvanised heavy-duty chassis

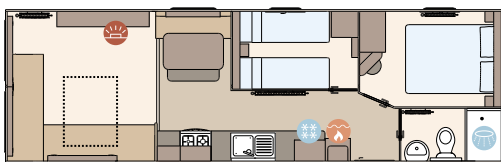
- ☐ 'Low E' PVCu Thermaglass double glazing
- ☐ Integrated microwave
- ☐ Winter premium pack
- ☐ Winter electric pack
- ☐ Patio doors or sliding door (available on 32ft x 12ft 2 bedroom model and both 36ft x 12ft models)
- ☐ Free-standing fridge
- ☐ Free-standing or integrated fridge freezer
- ☐ Externally vented powered cooker hood
- ☐ Bathroom extractor fans
- ☐ Lift-up bed in master bedroom
- ☐ Space saver bed for twin room
- ☐ Plain duvet covers and pillowcases
- ☐ Voiles throughout
- ☐ USB socket in lounge



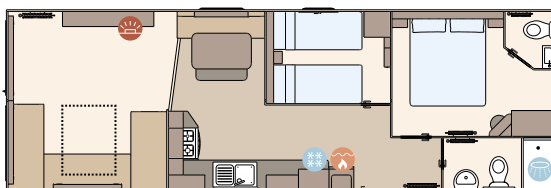
The Coworth 28ft x 10ft x 2 bedroom



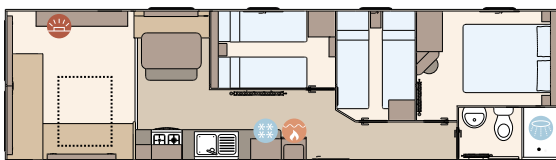
The Coworth 32ft x 12ft x 2 bedroom



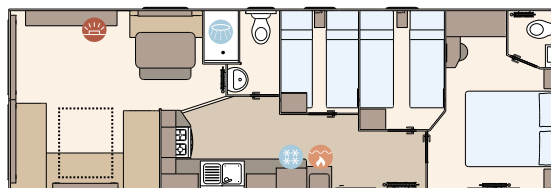
The Coworth 32ft x 10ft x 2 bedroom



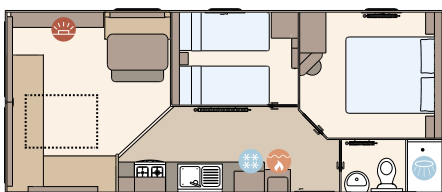
The Coworth 36ft x 12ft x 2 bedroom



The Coworth 36ft x 10ft x 3 bedroom



The Coworth 36ft x 12ft x 3 bedroom



The Coworth 28ft x 12ft x 2 bedroom

## KEY:



Fire



Water heater



Shower



Fridge/Freezer



Front pull out bed

## Included in Deluxe Pack (over standard)

- Curtains on poles
- Carpet underlay throughout
- Upgraded seating including arms and fabric kickboards
- 2 way switching in master bedroom
- Extra sockets in bedrooms
- Full height glass hob splashback
- Integrated microwave
- Free-standing fridge freezer
- Bathroom extractor fans
- Externally vented powered cooker hood
- Pre-galvanised chassis
- Kitchen upstands
- Wardrobe doors
- Upgraded TV/fireplace surround

**OPTIONAL  
WINTER  
PACKS**  
See Page 83



# THE RYEDALE

Let the good times flow

There's not a lot that beats being totally free to do exactly as you please. It's what holidays and The Ryedale were made for. Its open-plan design means there's nothing to get in the way of life, laughter and your good times.







## Highlights

- Brand new model for 2020
- Optional front doors on some models
- Stylishly designed holiday home for the whole family
- Low energy lighting



To take an interactive virtual tour  
visit [www.abiuk.co.uk](http://www.abiuk.co.uk)













Shows L-shaped dinette and patio doors option





# The Ryedale

With 8 different models to choose from, you're spoilt for choice. Find the open-plan layout that works for you and get ready to enjoy no end of good times.



FACTORY  
Approved



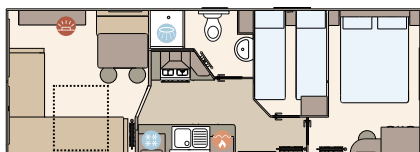
For further information and to take an interactive virtual tour of The Ryedale visit [www.abiuk.co.uk](http://www.abiuk.co.uk)

## All this included

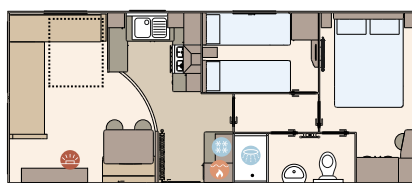
- ✓ Matt finish Chateaux Grey aluminium cladding
- ✓ Carpet underlay throughout
- ✓ Electric fire
- ✓ Scatter cushions in lounge
- ✓ Fixed dinette seating
- ✓ Externally vented powered cooker hood
- ✓ Soft close hinges on doors and drawers in kitchen
- ✓ King size bed in master bedroom (except 28ft models and 36ft/39ft x 12ft 3 bedroom models)
- ✓ Bathroom extractor fans
- ✓ Separate second toilet (32ft x 12ft models and up)

## Add any of these

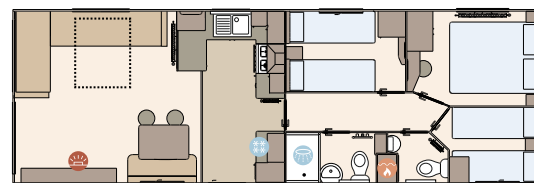
- ☐ Pre-galvanised or fully galvanised heavy-duty chassis
- ☐ 'Low E' PVCu Thermaglass double glazing
- ☐ Winter premium pack
- ☐ Winter electric pack
- ☐ Patio doors or sliding doors (available on 32ft x 12ft models upwards)
- ☐ Free-standing dining table and chairs
- ☐ Free-standing fridge
- ☐ Free-standing or integrated fridge freezer
- ☐ Integrated microwave
- ☐ L-shaped dinette (specific models)
- ☐ Lift-up bed in master bedroom
- ☐ Space saver bed for twin room
- ☐ Plain duvet covers and pillowcases
- ☐ Voiles throughout
- ☐ USB socket in lounge



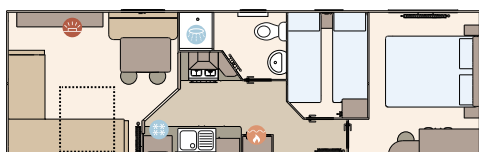
The Ryedale 28ft x 10ft x 2 bedroom



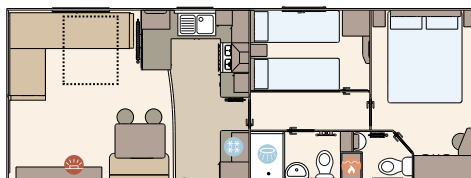
The Ryedale 28ft x 12ft x 2 bedroom



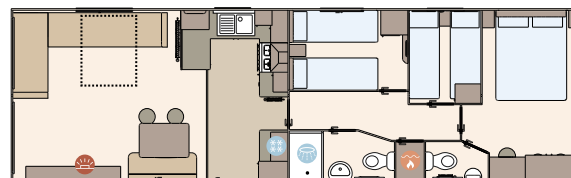
The Ryedale 36ft x 12ft x 3 bedroom



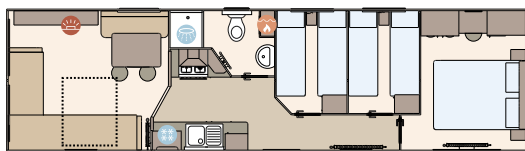
The Ryedale 32ft x 10ft x 2 bedroom



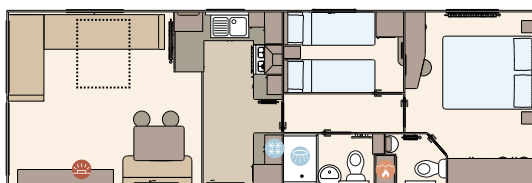
The Ryedale 32ft x 12ft x 2 bedroom



The Ryedale 39ft x 12ft x 3 bedroom



The Ryedale 36ft x 10ft x 3 bedroom



The Ryedale 36ft x 12ft x 2 bedroom

KEY: Fire Water heater Shower Fridge/Freezer Front pull out bed

OPTIONAL  
WINTER  
PACKS  
See Page 83



# THE WIMBLEDON

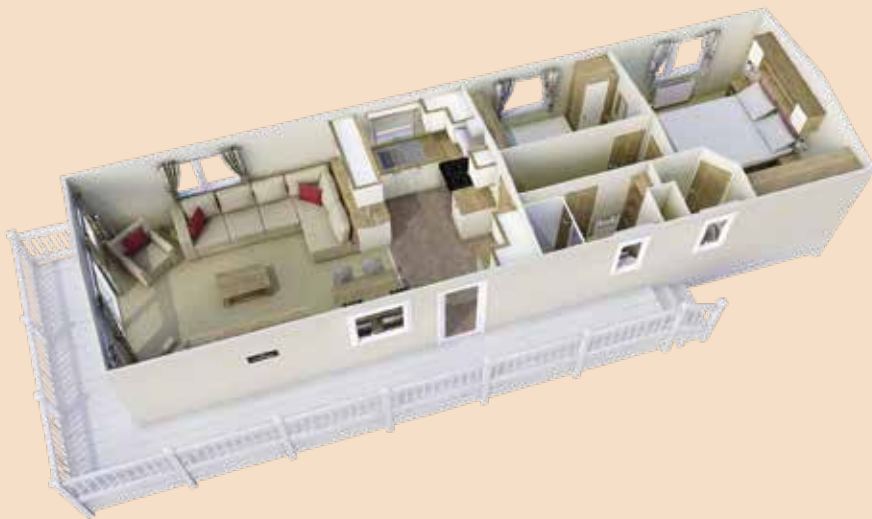
For those who like to take it slow

Swap modern life's hustle and bustle for a far gentler pace.

With its blush tones and country cottage touches,  
The Wimbledon makes every stay rosy. Lose yourself  
in its timeless rural romance.







## Highlights

- Brand new model for 2020
- Optional patio doors
- Feature log effect fire and surround
- Beautifully appointed Shaker style kitchen



To take an interactive virtual tour  
visit [www.abiuk.co.uk](http://www.abiuk.co.uk)





Shows optional armchairs



Shows optional armchairs











# The Wimbledon

If this holiday home's cottage-like charms have won you over, all that's left to do is decide which of the models is right for you. Will it be 2 or 3 bedrooms?

## All this included

- ✓ Matt finish Sandstone aluminium cladding
- ✓ Feature electric fire
- ✓ Carpet underlay throughout
- ✓ Stylish light fittings with low energy bulbs
- ✓ Free-standing dining table and chairs
- ✓ Externally vented powered cooker hood
- ✓ 40mm worktops
- ✓ Soft close hinges on doors and drawers in kitchen
- ✓ Lift-up bed in master bedroom
- ✓ King size bed in master bedroom (2 bedroom model only)
- ✓ TV point in master bedroom and one twin room
- ✓ USB sockets in all bedrooms
- ✓ USB socket in lounge
- ✓ Separate en suite toilet
- ✓ Shaver socket
- ✓ Bathroom extractor fans
- ✓ Coat hooks in all bathrooms
- ✓ Shaker style kitchen doors

## Add any of these

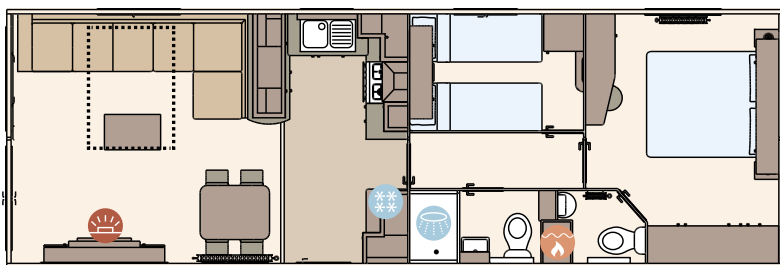
- ☐ Pre-galvanised or fully galvanised heavy-duty chassis
- ☐ 'Low E' PVCu Thermaglass double glazing
- ☐ Winter premium pack
- ☐ Winter electric pack
- ☐ Patio doors or sliding door available
- ☐ Free-standing fridge
- ☐ Free-standing or integrated fridge freezer
- ☐ Integrated microwave
- ☐ 'Exclusive' pocket sprung mattresses
- ☐ Bluetooth sound system in lounge
- ☐ Scatter cushions in lounge
- ☐ Reduced L-shaped seating and additional two armchairs (38ft x 12ft 2 bedroom model only)
- ☐ Voiles throughout
- ☐ Plain duvet covers and pillowcases
- ☐ Space saver bed for twin room



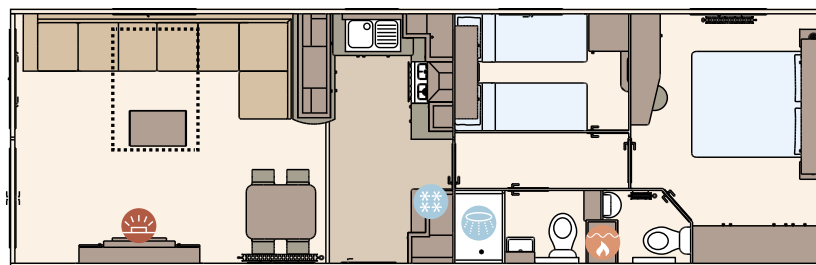
FACTORY  
Approved



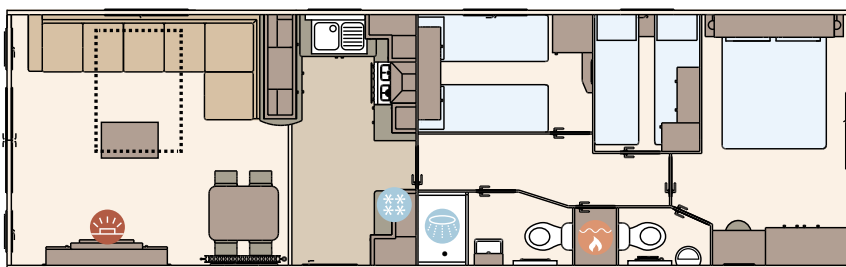
For further information and to take an interactive virtual tour of The Wimbledon visit [www.abiuk.co.uk](http://www.abiuk.co.uk)



The Wimbledon 36ft x 12ft x 2 bedroom



The Wimbledon 38ft x 12ft x 2 bedroom



The Wimbledon 39ft x 12ft x 3 bedroom

## KEY:

- Fire
- Water heater
- Fridge/Freezer
- Shower
- Front pull out bed

OPTIONAL  
WINTER  
PACKS  
See Page 83



# THE BLENHEIM

## An understated yet unique retreat

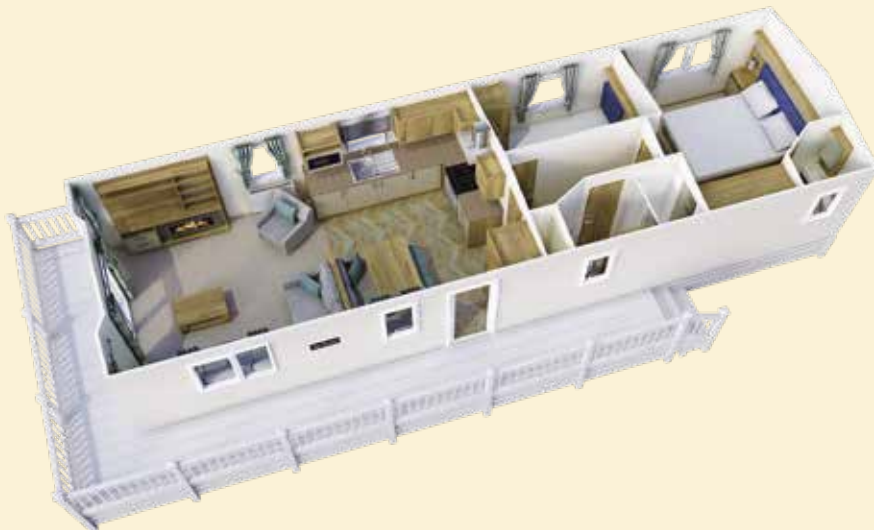
Classic design is hard to beat, but a twist here and there is oh-so satisfying. And The Blenheim does not disappoint. From its far from ordinary herringbone floor to cushions with contrast piping, this bolthole's quite simply extraordinary.







Shows optional armchair



## Highlights

- Updated colour scheme for 2020
- Fixed dinette or free-standing table and chairs available
- All models incorporate en suite toilets
- Relaxed and chic throughout

**360°** To take an interactive virtual tour  
visit [www.abiuk.co.uk](http://www.abiuk.co.uk)















# The Blenheim

So you've decided this holiday home's understated chic is for you. Now all you have to do is choose which layout is right for you from 3 spacious model options.

## All this included

- ✓ Matt finish Champagne aluminium cladding
- ✓ Electric fire
- ✓ Additional sockets next to TV point in lounge
- ✓ Carpet underlay throughout
- ✓ Stylish light fittings with low energy bulbs
- ✓ Fixed dinette seating
- ✓ Externally vented powered cooker hood
- ✓ 40mm worktops
- ✓ Soft close hinges on doors and drawers in kitchen
- ✓ Lift-up bed in master bedroom
- ✓ King size bed in master bedroom (2 bedroom model only)
- ✓ TV point in master bedroom and one twin room
- ✓ USB sockets in all bedrooms
- ✓ USB socket in lounge
- ✓ Separate en suite toilet
- ✓ Shaver socket
- ✓ Bathroom extractor fans
- ✓ Coat hooks in all bathrooms

## Add any of these

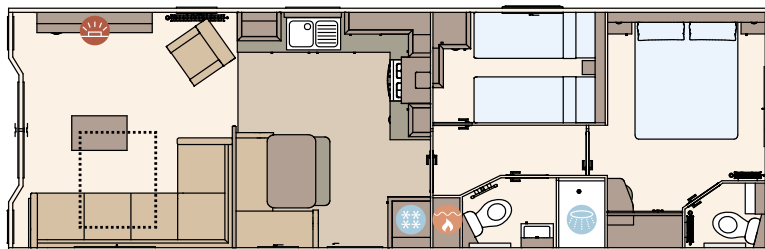
- ☐ Pre-galvanised or fully galvanised heavy-duty chassis
- ☐ 'Low E' PVCu Thermaglass double glazing
- ☐ Winter premium pack
- ☐ Winter electric pack
- ☐ Patio doors
- ☐ Free-standing fridge
- ☐ Free-standing or integrated fridge freezer
- ☐ Integrated microwave
- ☐ 'Exclusive' pocket sprung mattresses
- ☐ Bluetooth sound system in lounge
- ☐ Scatter cushions in lounge
- ☐ Armchair (in matching sofa fabric)
- ☐ Free-standing dining table and chairs
- ☐ Voiles throughout
- ☐ Plain duvet covers and pillowcases
- ☐ Space saver bed for twin room



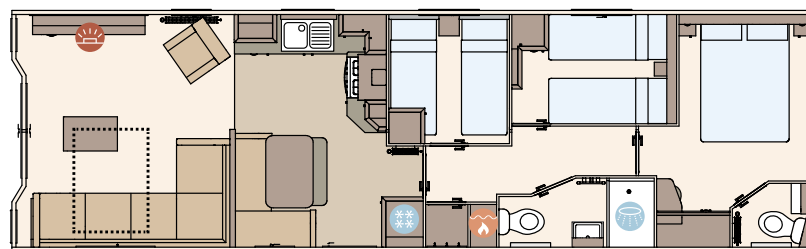
FACTORY  
Approved



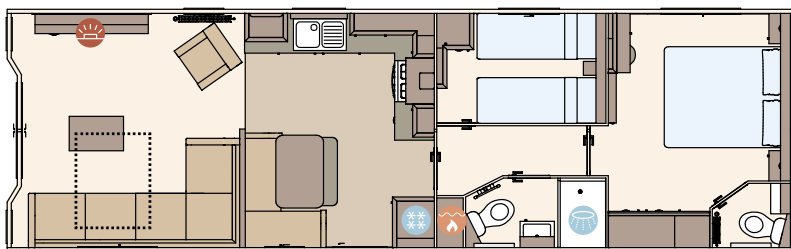
For further information and to take an interactive virtual tour of The Blenheim visit [www.abiuk.co.uk](http://www.abiuk.co.uk)



The Blenheim 37ft x 12ft x 2 bedroom



The Blenheim 40ft x 12ft x 3 bedroom



The Blenheim 39ft x 12ft x 2 bedroom

- KEY:
- Fire
  - Water heater
  - Shower
  - Fridge/Freezer
  - Front pull out bed

OPTIONAL  
WINTER  
PACKS  
See Page 83



# THE BEVERLEY

## A contemporary hideaway

Cocoon yourself in contemporary style in the heart of the countryside.

The landscape beyond The Beverley's door may be untamed, but inside everything is thoroughly considered. From statement fabrics to a spacious layout, it's wonderfully modern.







## Highlights

- Updated colour scheme for 2020
- Comfortable free-standing sofas
- Fully glazed front with sliding doors
- En suite with domestic bath (39ft x 12ft  
2 bedroom model only)
- Home from home comforts throughout

**360°** To take an interactive virtual tour  
visit [www.abiuk.co.uk](http://www.abiuk.co.uk)















# The Beverley

This haven of contemporary style is packed with mod cons and available in 3 different layouts. Find the model that suits you.

## All this included

- ✓ Matt finish Sandstone aluminium cladding
- ✓ Carpet underlay throughout
- ✓ Stylish light fittings with low energy bulbs
- ✓ Electric fire
- ✓ USB socket in lounge
- ✓ Additional sockets next to TV point in lounge
- ✓ Free-standing dining table and chairs
- ✓ Externally vented powered cooker hood
- ✓ 40mm worktops
- ✓ Soft close hinges on doors and drawers in kitchen
- ✓ Lift-up bed in master bedroom
- ✓ King size bed in master bedroom (2 bedroom model only)
- ✓ TV point in master bedroom and one twin room
- ✓ USB sockets in all bedrooms
- ✓ En suite with domestic style bath (39ft x 12ft 2 bedroom only)
- ✓ Shaver socket
- ✓ Bathroom extractor fans
- ✓ Separate en suite toilet
- ✓ Coat hooks in all bathrooms

## Add any of these

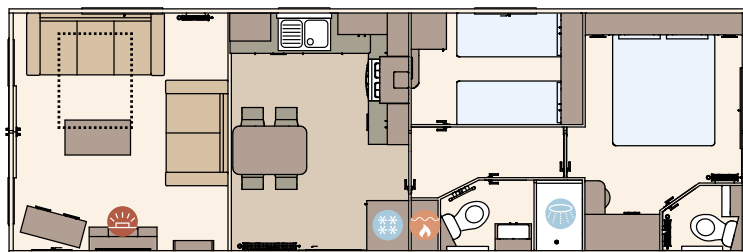
- ☐ Pre-galvanised or fully galvanised heavy-duty chassis
- ☐ 'Low E' PVCu Thermaglass double glazing
- ☐ Winter premium pack
- ☐ Winter electric pack
- ☐ Voiles throughout
- ☐ Free-standing fridge
- ☐ Free-standing or integrated fridge freezer
- ☐ Integrated microwave
- ☐ Integrated dishwasher or washing machine
- ☐ Plain duvet covers and pillowcases
- ☐ Bed runner in master bedroom
- ☐ Scatter cushions in lounge
- ☐ Lounge pouffe
- ☐ Patio doors
- ☐ Bluetooth sound system in lounge
- ☐ 'Exclusive' pocket sprung mattresses
- ☐ Space saver bed (twin room only)
- ☐ Replace en suite bath with shower cubicle (39ft x 12ft 2 bedroom only)



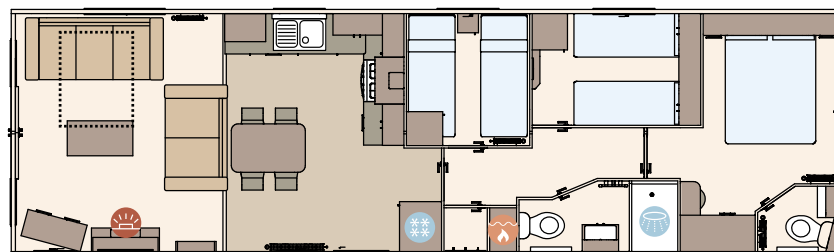
**FACTORY**  
*Approved*



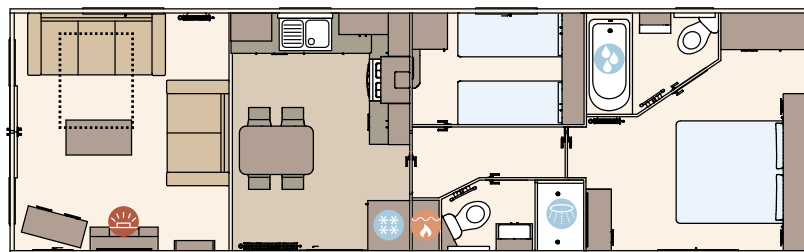
For further information and to take an interactive virtual tour of The Beverley visit [www.abiuk.co.uk](http://www.abiuk.co.uk)



The Beverley 36ft x 12ft x 2 bedroom



The Beverley 40ft x 12ft x 3 bedroom



The Beverley 39ft x 12ft x 2 bedroom

## KEY:



Fire



Water heater



Shower



Bath



Fridge/Freezer



Front pull out bed

**OPTIONAL**  
**WINTER**  
**PACKS**  
See Page 83



# THE DERWENT

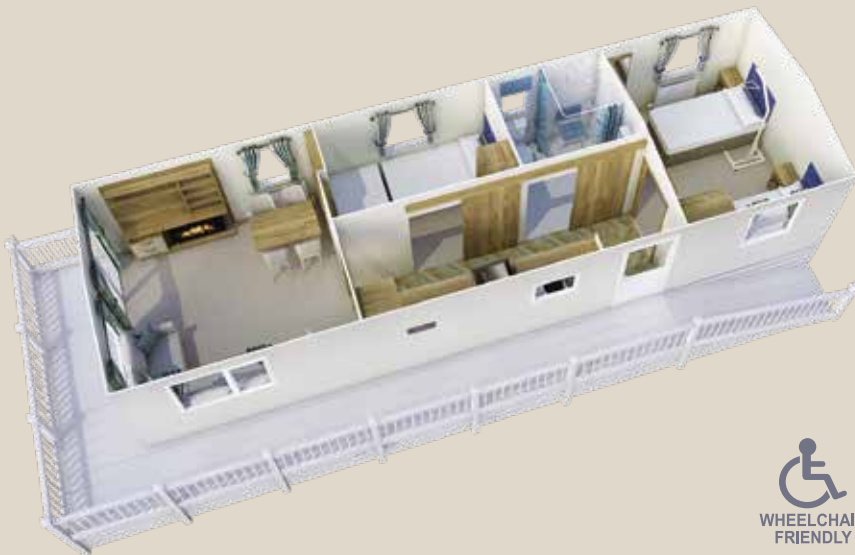
A retreat where everybody can relax

Choose a Great British holiday home that everyone can enjoy.

Designed with accessibility in mind, The Derwent's wider entrances, spacious layout and thoughtful details, like lower worktops, are made for those who need a helping hand.







## Highlights

- Updated layout for 2020
- New colour scheme throughout
- Optional patio doors available
- Full accessibility with wider door frames throughout
- 3' divan beds in master bedroom
- Brand new wet room design for 2020



To take an interactive virtual tour visit [www.abiuk.co.uk](http://www.abiuk.co.uk)















# The Derwent

This holiday home, with its carefully considered features and thoughtful design, makes relaxing breaks accessible to all.



## All this included

- ✓ Matt finish Champagne aluminium cladding
- ✓ Carpet underlay throughout
- ✓ Sliding internal doors
- ✓ Separate lounge and kitchen
- ✓ Electric fire
- ✓ Scatter cushions in lounge
- ✓ USB socket in lounge
- ✓ Free-standing dining table and chairs
- ✓ Soft close hinges on doors and drawers in kitchen
- ✓ Externally vented powered cooker hood
- ✓ Lowered base units in kitchen
- ✓ 3' divan beds in master bedroom which can convert to a 6' wide bed
- ✓ TV point in master bedroom
- ✓ Patient helper apparatus in master bedroom
- ✓ USB sockets in all bedrooms
- ✓ Wet room bathroom with Doc M disability equipment
- ✓ Bathroom extractor fan
- ✓ Widened entrance for wheelchair access

## Add any of these

- ☐ Pre-galvanised or fully galvanised heavy-duty chassis
- ☐ 'Low E' PVCu Thermaglass double glazing
- ☐ Winter premium pack
- ☐ Winter electric pack
- ☐ Voiles throughout
- ☐ Integrated microwave
- ☐ Integrated fridge freezer
- ☐ Plain duvet covers and pillowcases
- ☐ Standard height base units in kitchen
- ☐ Patio doors



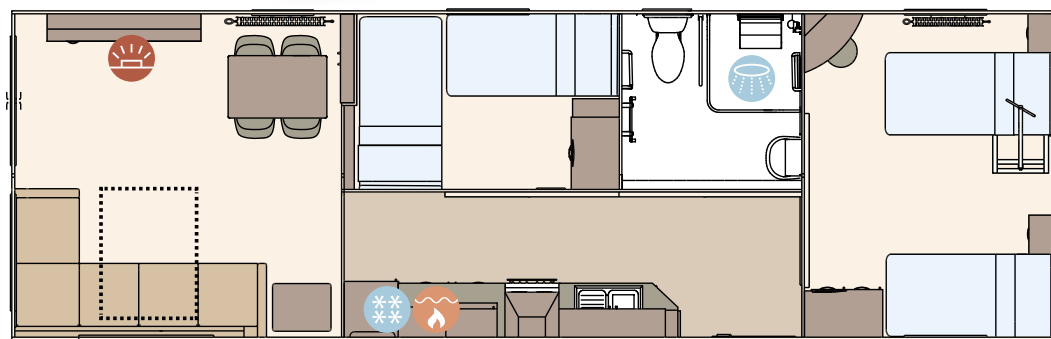
FACTORY  
Approved



For further information and to take an interactive virtual tour of The Derwent visit [www.abiuk.co.uk](http://www.abiuk.co.uk)



OPTIONAL  
WINTER  
PACKS  
See Page 83



The Derwent 38ft x 12ft x 2 bedroom

KEY: Fire Water heater Shower Fridge/Freezer Front pull out bed

Every ABI model comes fitted with a double pull out bed in the living room as standard.



# THE WINDERMERE

For those who long for the rural life

Eat, sleep and breathe the country life every second you're away in The Windermere. If you long for a truly rural abode, this holiday home's traditional farmhouse touches, checked fabrics and rustic look are just the ticket.







## Highlights

- Updated and improved for 2020
- Luxury living in a 12ft wide holiday home
- Free-standing domestic style sofas
- Beautifully appointed Shaker style kitchen
- En suite shower and walk-in wardrobe (2 bedroom model only)



To take an interactive virtual tour  
visit [www.abiuk.co.uk](http://www.abiuk.co.uk)















# The Windermere

As well as lots of country styling and bags of living space, you also have a choice of a 2 or 3 bedroom model, giving you just the right amount of space for your family.



**FACTORY**  
*Approved*

## All this included

- ✓ Matt finish Champagne aluminium cladding
- ✓ Carpet underlay throughout
- ✓ Electric fire
- ✓ Scatter cushions in lounge
- ✓ Free-standing dining table and chairs
- ✓ Stylish light fittings with low energy bulbs
- ✓ Voiles throughout
- ✓ 40mm worktops
- ✓ Integrated fridge freezer
- ✓ Soft close hinges on doors and drawers in kitchen
- ✓ Externally vented powered cooker hood
- ✓ TV point in master bedroom and one twin room
- ✓ Lift-up bed in master bedroom
- ✓ Plain duvet covers and pillowcases
- ✓ USB sockets in all bedrooms
- ✓ Bed runner and scatter cushions on all beds
- ✓ Separate second toilet (3 bedroom model only)
- ✓ Separate en suite shower and toilet (2 bedroom model only)
- ✓ Bathroom extractor fans

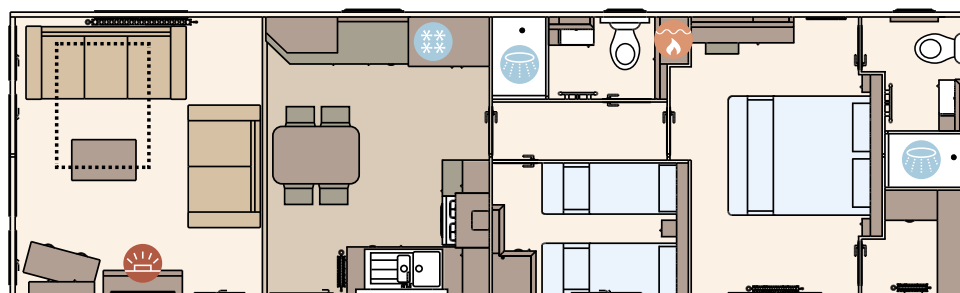
- ✓ Composite kitchen sink
- ✓ USB socket in lounge
- ✓ Shaver socket
- ✓ Additional sockets next to TV in lounge
- ✓ Coat hooks in all bathrooms
- ✓ King size bed in master bedroom (2 bedroom model only)

## Add any of these

- ☐ Pre-galvanised or fully galvanised heavy-duty chassis
- ☐ Patio doors
- ☐ 'Low E' PVCu Thermaglass double glazing
- ☐ Winter premium pack
- ☐ Winter electric pack
- ☐ Space saver bed for twin room
- ☐ Integrated microwave
- ☐ Integrated dishwasher
- ☐ Integrated washing machine
- ☐ Bluetooth sound system in lounge
- ☐ 'Exclusive' pocket sprung mattresses



For further information and to take an interactive virtual tour of The Windermere visit [www.abiuk.co.uk](http://www.abiuk.co.uk)



The Windermere 40ft x 12ft x 2 bedroom

KEY:



Fire



Water heater



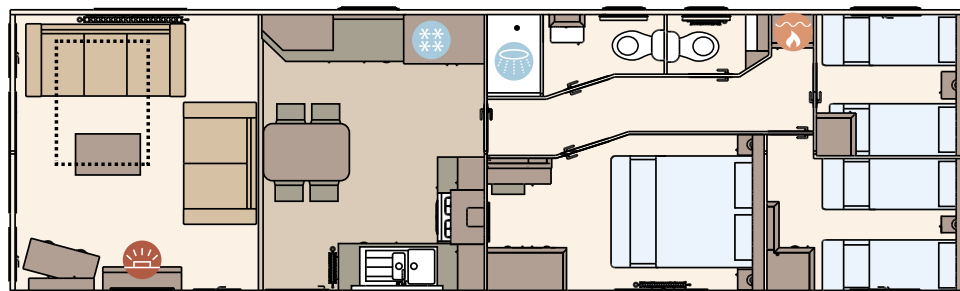
Shower



Fridge/Freezer



Front pull out bed



The Windermere 40ft x 12ft x 3 bedroom

**OPTIONAL**  
**WINTER**  
**PACKS**  
See Page 83



# THE LANGDALE

Seriously sleek and far from ordinary

Enjoy a little Scandinavian chic on your Great British retreat. From its feature fire to super sleek kitchen, with wood details and graphite grey contrast cupboards, The Langdale's cosy Scandi style really does set it apart.







## Highlights

- Brand new model for 2020
- Luxury wood burner style feature fire
- Free-standing domestic style seats
- Modern spacious kitchen
- Setting a new standard for luxury holiday homes

**360°** To take an interactive virtual tour  
visit [www.abiuk.co.uk](http://www.abiuk.co.uk)















# The Langdale

If you've decided this distinctive holiday home is the one for you, then there's only one more decision to make. Will you choose the 2 or 3 bedroom model?

For external CanExel™ Cladding option please visit [www.abiuk.co.uk](http://www.abiuk.co.uk)



FACTORY  
Approved



For further information and to take an interactive virtual tour of The Langdale visit [www.abiuk.co.uk](http://www.abiuk.co.uk)

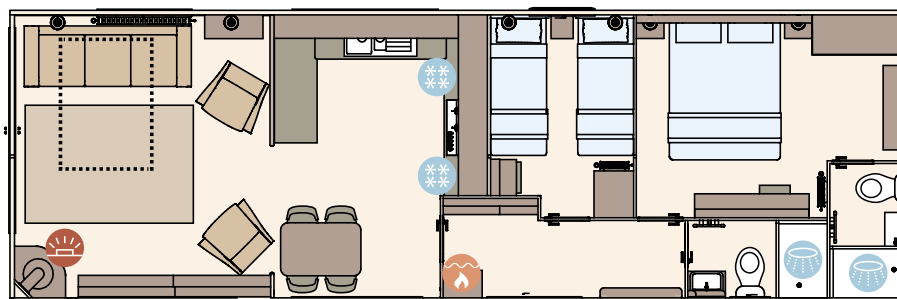
## All this included

- ✓ Matt finish Champagne aluminium cladding
- ✓ Pre-galvanised twin axle chassis
- ✓ White 'Low E' PVCu Thermaglass double glazing
- ✓ Front sliding doors
- ✓ Full condensing boiler gas central heating
- ✓ Luxury wood burner style feature fire
- ✓ Carpet underlay to bedrooms
- ✓ Free-standing dining table and chairs
- ✓ Satellite co-ax
- ✓ USB socket in lounge
- ✓ Scatter cushions in lounge
- ✓ Voiles throughout
- ✓ Soft close hinges on doors and drawers in kitchen
- ✓ Integrated oven & separate 5 burner hob
- ✓ 40mm worktops
- ✓ Integrated fridge and integrated freezer
- ✓ Externally vented powered cooker hood
- ✓ Lift-up bed in master bedroom
- ✓ TV point in all bedrooms
- ✓ USB sockets in all bedrooms
- ✓ King size bed in master bedroom (2 bedroom model only)
- ✓ Composite kitchen sink

- ✓ Plain duvet covers and pillowcases
- ✓ Bed runners and scatter cushions on all beds
- ✓ En suite shower (2 bedroom model only)
- ✓ En suite toilet
- ✓ Bathroom extractor fans
- ✓ Shaver socket
- ✓ Additional sockets next to TV point in lounge
- ✓ Coat hooks in all bathrooms
- ✓ Rug in lounge with standard colour scheme and floor vinyl throughout
- ✓ Entrance hall and cloakroom

## Add any of these

- ☐ Residential specification BS3632
- ☐ Deluxe Bluetooth sound system
- ☐ 'Exclusive' pocket sprung mattresses
- ☐ Space saver bed for twin room
- ☐ Integrated washing machine
- ☐ Integrated dishwasher
- ☐ Integrated microwave
- ☐ Fully galvanised heavy-duty chassis
- ☐ CanExel™ exterior cladding
- ☐ Carpets in lounge
- ☐ Alternative colour scheme and soft furnishings available



The Langdale 40ft x 13ft x 2 bedroom

KEY:



Fire



Water heater



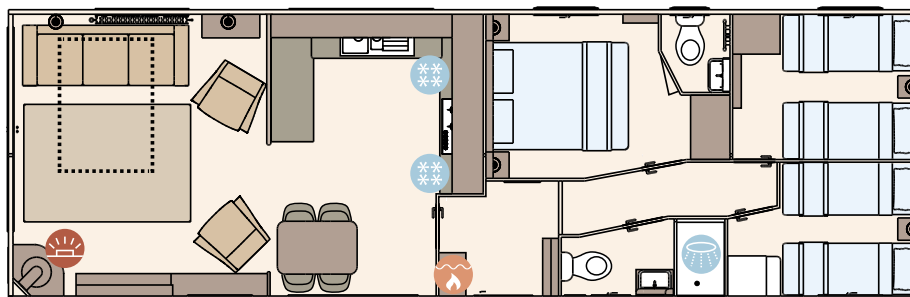
Shower



Fridge/Freezer



Front pull out bed



The Langdale 41ft x 13ft x 3 bedroom

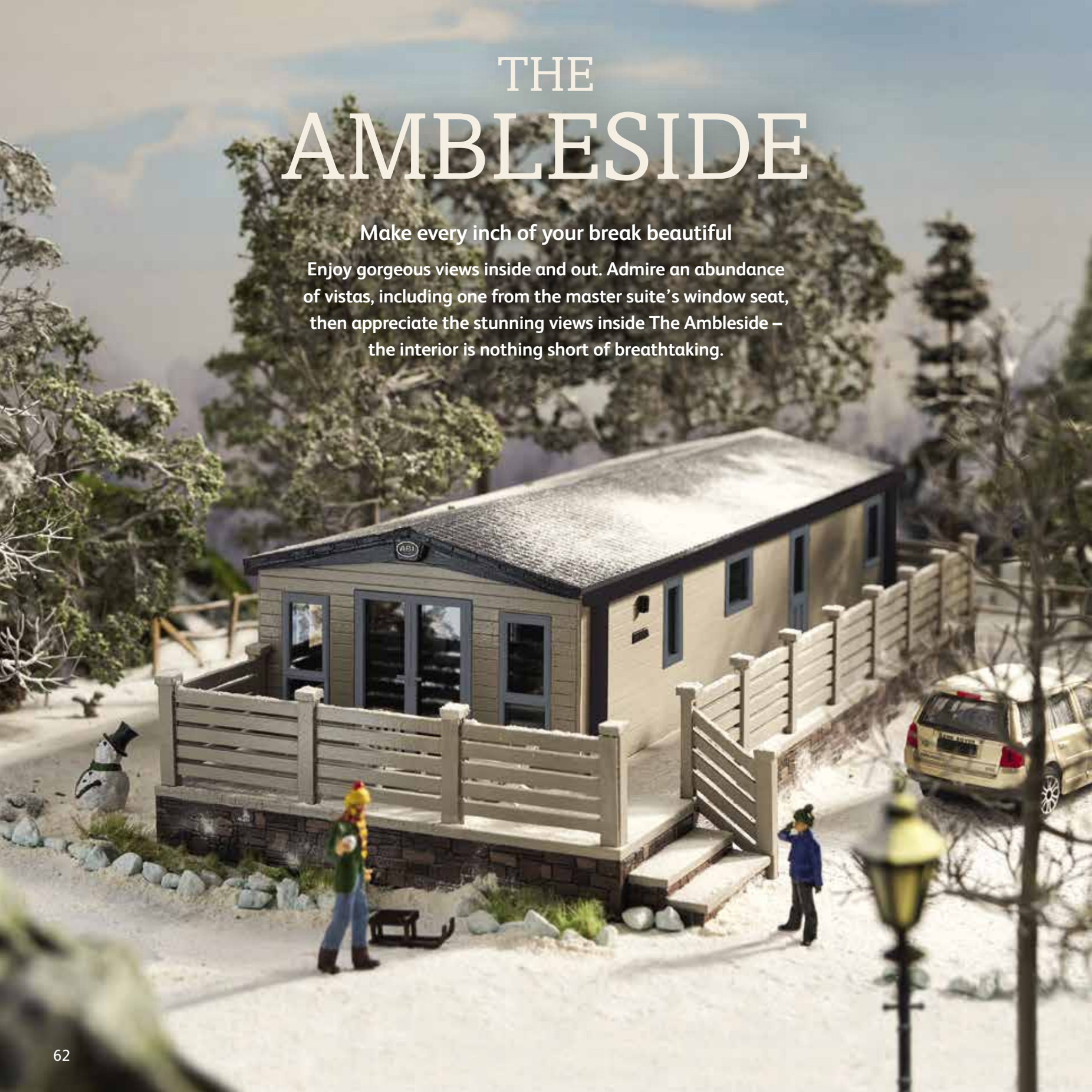
OPTIONAL  
Residential  
specification  
BS3632  
See Page 83



# THE AMBLESIDE

Make every inch of your break beautiful

Enjoy gorgeous views inside and out. Admire an abundance of vistas, including one from the master suite's window seat, then appreciate the stunning views inside The Ambleside – the interior is nothing short of breathtaking.







## Highlights

- A firm favourite updated for 2020
- Stunning kitchen with integrated appliances
- Home from home styling
- 14ft Premier Pack available providing more space and double bed option in twin room
- Large, comfortable free-standing sofas
- Optional panoramic sliding doors



To take an interactive virtual tour visit [www.abiuk.co.uk](http://www.abiuk.co.uk)









Shows panoramic sliding doors option







Shows Premier Pack option



Shows panoramic sliding doors option



# The Ambleside

Views, lots of them, are the beauty of this holiday home. And it's also available in 4 different layouts, leaving you spoilt for choice as well as views.

For external CanExel™ Cladding option please visit [www.abiuk.co.uk](http://www.abiuk.co.uk)



**FACTORY**  
**Approved**



For further information and to take an interactive virtual tour of The Ambleside visit [www.abiuk.co.uk](http://www.abiuk.co.uk)

## All this included

- ✓ Matt finish Chateaux grey aluminium cladding
- ✓ Pre-galvanised twin axle chassis
- ✓ Graphite Grey 'Low E' PVCu Thermaglass double glazing
- ✓ Front patio doors
- ✓ Full condensing boiler gas central heating
- ✓ Log burner style electric fire
- ✓ Carpet underlay throughout
- ✓ Free-standing dining table and chairs
- ✓ Upholstered footstool
- ✓ Satellite co-ax
- ✓ USB socket in lounge
- ✓ Scatter cushions in lounge
- ✓ Voiles throughout
- ✓ Soft close hinges on doors and drawers in kitchen
- ✓ Soft close drawers throughout
- ✓ Integrated oven and separate 5 burner hob
- ✓ 40mm worktops
- ✓ Integrated fridge freezer
- ✓ Externally vented powered cooker hood
- ✓ Lift-up bed in master bedroom
- ✓ TV point in all bedrooms
- ✓ USB sockets in all bedrooms (includes USB sockets on both sides of the main bed)
- ✓ King size bed in master bedroom (2 bedroom model only)
- ✓ Plain duvet covers and pillowcases
- ✓ Bed runners and scatter cushions on all beds
- ✓ Separate en suite shower (2 bedroom model only)
- ✓ Separate en suite toilet

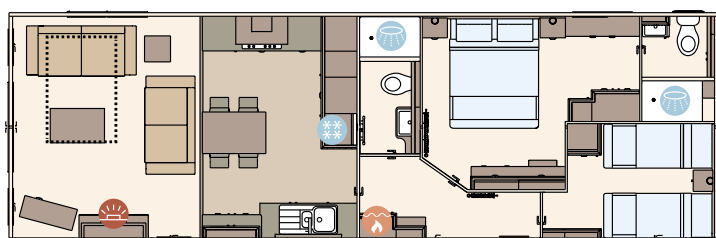
- ✓ Bathroom extractor fans
- ✓ Shaver socket
- ✓ Coat hooks in all bathrooms
- ✓ Entrance hall
- ✓ Composite kitchen sink

## Add any of these

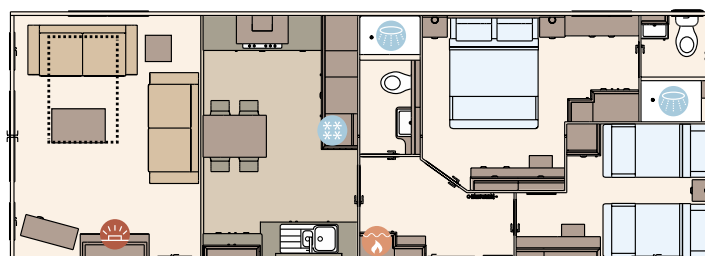
- ☐ Premier Pack
- ☐ Residential specification BS3632
- ☐ 'Exclusive' pocket sprung mattresses
- ☐ Integrated dishwasher
- ☐ Integrated washing machine
- ☐ Integrated microwave
- ☐ Fully galvanised heavy-duty chassis
- ☐ Deluxe Bluetooth sound system
- ☐ Second room as double instead of twin, bed includes lift-up storage (Premier model)
- ☐ CanExel™ exterior cladding
- ☐ Space saver bed in twin room
- ☐ Additional window in lounge nearside corner
- ☐ Front sliding door in lieu of French patio doors

## The Ambleside Premier Pack

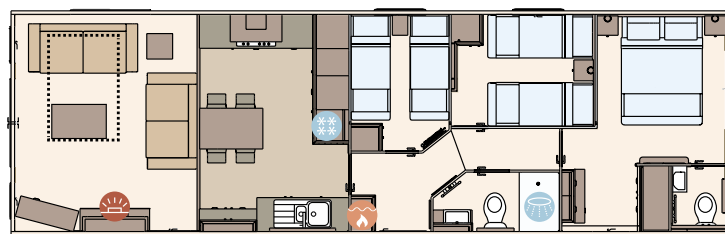
- ✓ Chateaux Grey hard PVCu cladding
- ✓ 14ft wide
- ✓ Larger sofa
- ✓ 3' beds in twin room
- ✓ Dressing table with stool in twin room (2 bedroom model only)



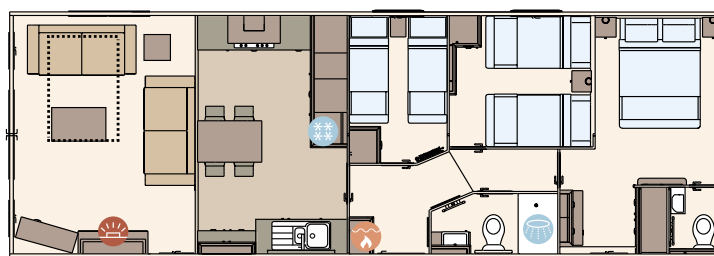
The Ambleside 40ft x 13ft x 2 bedroom



The Ambleside Premier 40ft x 14ft x 2 bedroom



The Ambleside 41ft x 13ft x 3 bedroom



The Ambleside Premier 41ft x 14ft x 3 bedroom

KEY: Fire Water heater Shower Fridge/Freezer Front pull out bed

**OPTIONAL**  
**Residential**  
**specification**  
**BS3632**  
See Page 83

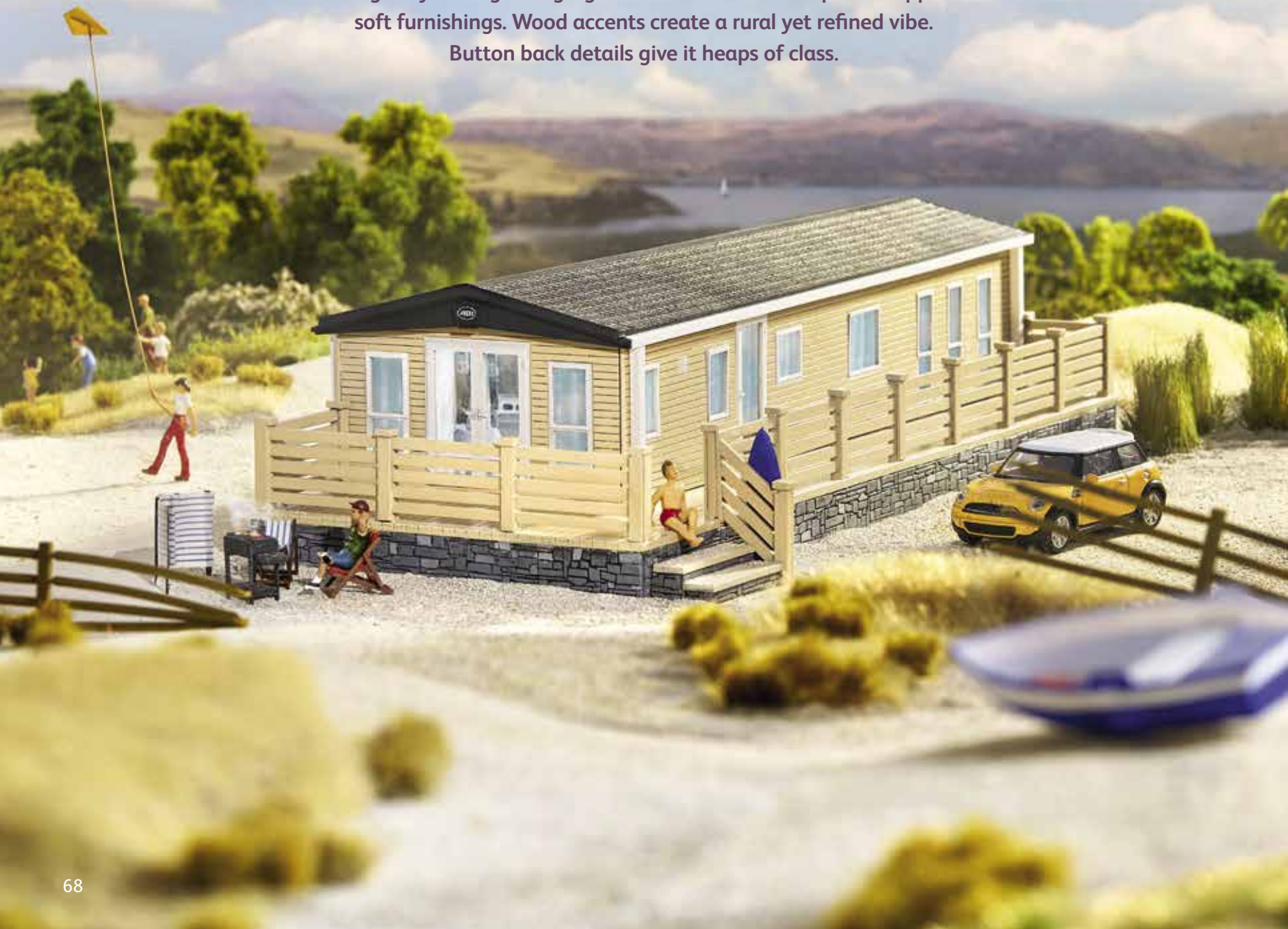


# THE BEAUMONT

Indulging your love of luxury and nature

The Beaumont – a haven that blends nature and luxury ever so elegantly – brings the gorgeous outdoors in. Floral prints dapple soft furnishings. Wood accents create a rural yet refined vibe.

Button back details give it heaps of class.







## Highlights

- Updated colour scheme and new sofa for 2020
- Luxurious furnishings and fittings throughout
- 14ft wide as standard with king size master bed and 3' beds in one twin
- Walk through dressing area and en suite bath or shower (2 bedroom model only)
- Optional larder unit
- Optional panoramic sliding doors

**360°** To take an interactive virtual tour  
visit [www.abiuk.co.uk](http://www.abiuk.co.uk)





Shows 2 bedroom master bedroom



Shows panoramic sliding doors option





Optional larder unit









# The Beaumont

Brimming with little luxuries, helpful mod cons and with a choice of 2 or 3 bedrooms, this holiday home really is everything you could dream of.

For external CanExel™ Cladding option please visit [www.abiuk.co.uk](http://www.abiuk.co.uk)



**FACTORY**  
*Approved*



For further information and to take an interactive virtual tour of The Beaumont visit [www.abiuk.co.uk](http://www.abiuk.co.uk)

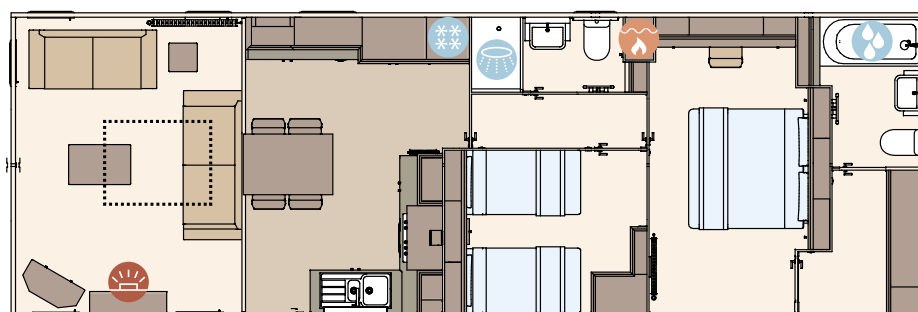
## All this included

- ✓ Fully galvanised heavy-duty chassis
- ✓ Cappuccino hard PVCu cladding
- ✓ Front patio doors
- ✓ White 'Low E' PVCu Thermaglass double glazing
- ✓ Carpet underlay throughout
- ✓ Full condensing boiler gas central heating
- ✓ Voiles throughout
- ✓ Stylish domestic sofas
- ✓ Upholstered footstool
- ✓ Free-standing dining table and chairs
- ✓ Scatter cushions in lounge
- ✓ USB socket in lounge
- ✓ Satellite co-ax
- ✓ Additional sockets next to TV point in lounge
- ✓ 5 burner gas hob including wok burner
- ✓ 40mm worktops
- ✓ Composite kitchen sink
- ✓ Integrated fridge freezer
- ✓ Integrated dishwasher
- ✓ Integrated microwave
- ✓ Externally vented powered cooker hood
- ✓ Soft close hinges on doors and drawers throughout
- ✓ Lift-up bed in master bedroom
- ✓ King size bed in master bedroom
- ✓ Walk through dressing area in master bedroom (2 bedroom model only)

- ✓ Plain duvet covers and pillowcases
- ✓ Bed runners and scatter cushions on all beds
- ✓ USB sockets in all bedrooms (includes USB sockets to both sides of the main bed)
- ✓ TV point in all bedrooms
- ✓ En suite with domestic style bath (2 bedroom model only)
- ✓ Separate en suite shower and toilet (3 bedroom model only)
- ✓ Bathroom extractor fans
- ✓ Shaver socket
- ✓ Coat hooks in all bathrooms

## Add any of these

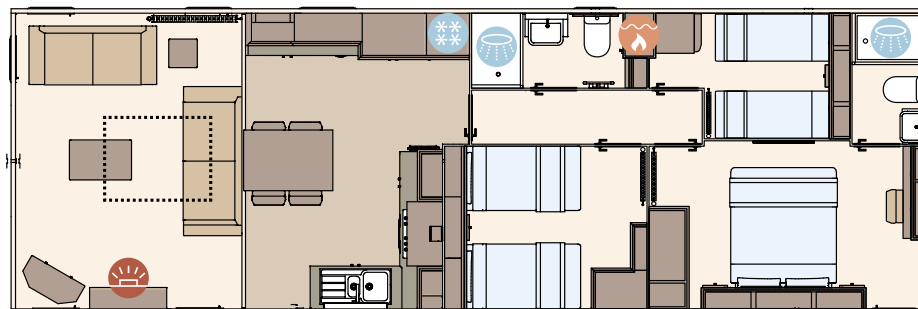
- ☐ Deluxe Bluetooth sound system
- ☐ 'Exclusive' pocket sprung mattresses
- ☐ Space saver bed for twin room
- ☐ Larder unit
- ☐ Integrated washing machine
- ☐ CanExel™ exterior cladding
- ☐ Residential specification BS3632
- ☐ Second room as double instead of twin, bed includes lift-up storage
- ☐ Replace en suite bath with shower cubicle (2 bedroom model only)
- ☐ Front sliding door in lieu of French patio doors



The Beaumont 42ft x 14ft x 2 bedroom

## KEY:

- Fire
- Water heater
- Shower
- Bath
- Fridge/Freezer
- Front pull out bed



The Beaumont 42ft x 14ft x 3 bedroom

**OPTIONAL**  
**Residential**  
**specification**  
**BS3632**  
See Page 83



# THE WESTWOOD

A sumptuous sanctuary for relaxation

Because every day away is priceless, The Westwood is designed for total relaxation. Sink deep into inviting armchairs. Relax fireside. Let the plush pile pamper those weary feet. And then just imagine the other luxuries you'll find beyond its lounge.







## Highlights

- Sumptuous master bedroom with dressing area and en suite shower
- Spacious twin room with 3' beds
- Luxury kitchen with range cooker
- Timelessly styled 3 piece suite
- The ultimate in holiday homes
- 14ft Westwood Lodge also available providing more space



To take an interactive virtual tour visit [www.abiuk.co.uk](http://www.abiuk.co.uk)









Enjoy an ABI life.









# The Westwood

Lavished with every luxury you could wish for, every inch of this exceptional holiday home is carefully crafted to deliver utterly relaxing breaks.

For external CanExel™ Cladding option please visit [www.abiuk.co.uk](http://www.abiuk.co.uk)



**FACTORY**  
*Approved*



For further information and to take an interactive virtual tour of The Westwood Lodge visit [www.abiuk.co.uk](http://www.abiuk.co.uk)

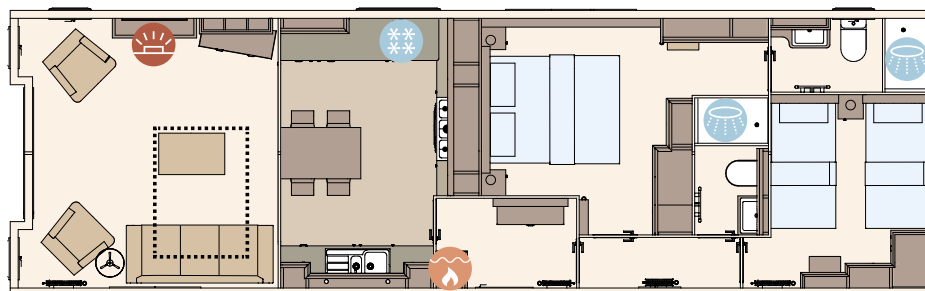
## All this included

- ✓ Claystone hard PVCu cladding
- ✓ Fully galvanised heavy-duty chassis
- ✓ Front patio doors
- ✓ White 'Low E' PVCu Thermaglass double glazing
- ✓ Carpet underlay throughout
- ✓ Full condensing boiler gas central heating
- ✓ Electric fire
- ✓ Free-standing domestic style furniture
- ✓ Upholstered footstool
- ✓ Scatter cushions in lounge
- ✓ Free-standing dining table and chairs
- ✓ USB socket in lounge
- ✓ Voiles throughout
- ✓ Satellite co-ax
- ✓ Integrated fridge and integrated freezer
- ✓ Integrated dishwasher
- ✓ Integrated microwave
- ✓ Externally vented powered cooker hood
- ✓ Range cooker with 5 burner hob
- ✓ Ceramic kitchen sink
- ✓ Soft close hinges on doors and drawers throughout
- ✓ 40mm worktops
- ✓ King size bed in master bedroom

- ✓ Lift-up bed in master bedroom
- ✓ 3' single beds
- ✓ Plain duvet covers and pillowcases
- ✓ Bed throws and scatter cushions on all beds
- ✓ USB sockets in all bedrooms (includes USB sockets on both sides of the main bed)
- ✓ TV point in all bedrooms
- ✓ Separate en suite shower and toilet
- ✓ Bathroom extractor fans
- ✓ Shaver socket
- ✓ Luxury soft close toilets
- ✓ Coat hooks in all bathrooms and master bedroom
- ✓ Entrance hall and cloakroom

## Add any of these

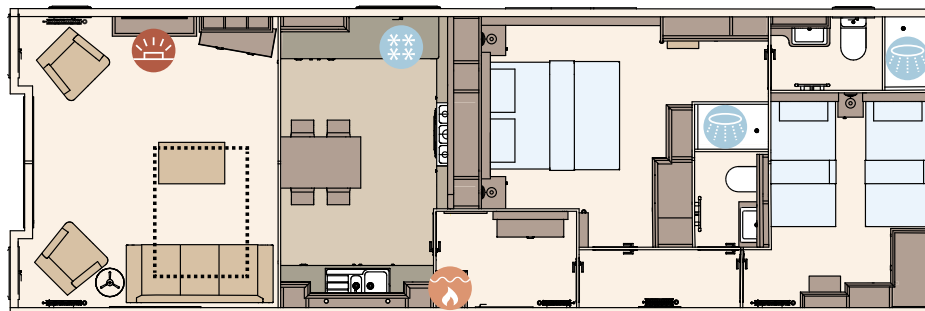
- ☐ Residential specification BS3632
- ☐ Deluxe Bluetooth sound system
- ☐ 'Exclusive' pocket sprung mattresses
- ☐ Space saver bed for twin room
- ☐ Integrated washing machine
- ☐ CanExel™ exterior cladding



The Westwood 43ft x 13ft x 2 bedroom

## KEY:

- Fire
- Water heater
- Shower
- Fridge/Freezer
- Front pull out bed



The Westwood Lodge 43ft x 14ft x 2 bedroom

**OPTIONAL**  
**Residential**  
**specification**  
**BS3632**  
See Page 83



Model Specifications and Options.

Standard across the whole ABI Collection.

For your comfort and safety, all ABI holiday homes also include a list of standard items, fittings and safety features.

✓ 100mm insulation in roof

✓ Upgraded external walls with 50mm insulation (except The Coworth and The Ryedale)

✓ Domestic gutters and downpipes

✓ Domestic style internal doors

✓ Domestic mattresses (3 times more filling and more durable covering)

✓ Domestic twin cavity oven with electric ignition (range oven in The Westwood)

✓ Electric fire

✓ Thermostatic shower mixer valve

✓ Underlay in carpeted areas (except The Coworth bedrooms)

✓ Low energy bulbs throughout and LED bulbs in all spotlights

✓ Lined curtains (except The Coworth)

✓ Pull out bed in lounge

✓ Steel pantile roof

✓ 10 year smoke detector

✓ Carbon monoxide detector x2

✓ Fire extinguisher

✓ Escape windows

✓ Standard   0 Optional   ✕ Not available

EXTERIOR

PAINTED CHASSIS	✓	✓	✓	✓	✓	✓	✓
PRE-GALVANISED CHASSIS	0	0	0	0	0	0	0
FULLY GALVANISED CHASSIS	0	0	0	0	0	0	0
FULLY GALVANISED HEAVY-DUTY CHASSIS	✕	✕	✕	✕	✕	✕	✕
PVCu CLADDING	✕	✕	✕	✕	✕	✕	✕
CANEXEL™ CLADDING	✕	✕	✕	✕	✕	✕	✕
UPGRADED EXTERNAL WALLS	✕	✕	✕	✕	✕	✕	✕
FRONT PATIO DOOR	✕	✕	✕	✕	0	0	0
'LOW E' PVCu THERMAGLASS DOUBLE GLAZING	0	0	0	0	0	0	0

INTERIOR

WINTER ELECTRIC PACK	0	0	0	0	0	0	0
WINTER PREMIUM PACK	0	0	0	0	0	0	0
VOILES THROUGHOUT	0	0	0	0	0	0	0

LOUNGE/DINING AREA

ELECTRIC FIRE	✓	✓	✓	✓	✓	✓	✓
SCATTER CUSHIONS	✓	✓	✓	✓	✓	✓	✓
BLUETOOTH SOUND SYSTEM	✕	✕	✕	✕	✕	✕	✕
USB CHARGER IN LOUNGE	0	0	0	0	0	0	0
SEPARATE LOUNGE / KITCHEN	✕	✕	✕	✕	✕	✕	✕
FREE-STANDING DINING TABLE & CHAIRS	0	0	0	0	0	0	0
L-SHAPED DINETTE SEATING	✕	✕	✕	✕	✕	✕	✕

KITCHEN

POWERED COOKER HOOD	0	0	0	0	0	0	0
FREE-STANDING FRIDGE OR FRIDGE FREEZER	0	0	0	0	0	0	0
INTEGRATED FRIDGE FREEZER	0	0	0	0	0	0	0
INTEGRATED MICROWAVE OVEN	✕	✕	✕	✕	✕	✕	✕
LARDER UNIT	✕	✕	✕	✕	✕	✕	✕
DISHWASHER	✕	✕	✕	✕	✕	✕	✕
WASHING MACHINE	✕	✕	✕	✕	✕	✕	✕

BATHROOM

DOMESTIC STYLE BATH	✕	✕	✕	✕	✕	✕	✕
SEPARATE/EN SUITE TOILET	✕	✕	✕	✕	✓	✓	✓
EN SUITE SHOWER OR BATH	✕	✕	✕	✕	✕	✕	✕
BATHROOM EXTRACTOR FAN	0	0	0	0	0	0	0

BEDROOMS

LIFT-UP DOUBLE BED IN MASTER BEDROOM	0	0	0	0	0	0	0
KING SIZE BED IN MASTER BEDROOM	✕	✕	✕	✓	✕	✓	✓
DUVET COVERS AND PILLOWCASES	0	0	0	0	0	0	0
SPACE SAVER BED (TWIN ROOM ONLY)	0	0	0	0	0	0	0
EXCLUSIVE POCKET SPRUNG MATTRESS	✕	✕	✕	✕	✕	✕	✕
USB CHARGER IN BEDROOMS	✕	✕	✕	✕	✕	✕	✕
TV POINT IN MASTER BEDROOM	✕	✕	✕	✕	✕	✕	✕
TV POINT IN 1 X TWIN ROOM	✕	✕	✕	✕	✕	✕	✕

RESIDENTIAL BUILD B53632	✕	✕	✕	✕	✕	✕	✕
--------------------------	---	---	---	---	---	---	---

THE COWORTH

28' X 10' 2 BED	32' X 10' 2 BED	36' X 10' 3 BED	28' X 12' 2 BED	32' X 12' 2 BED	36' X 12' 2 BED	36' X 12' 3 BED
-----------------	-----------------	-----------------	-----------------	-----------------	-----------------	-----------------

✓	✓	✓	✓	✓	✓	✓
0	0	0	0	0	0	0
0	0	0	0	0	0	0
✕	✕	✕	✕	✕	✕	✕
✕	✕	✕	✕	✕	✕	✕
✕	✕	✕	✕	✕	✕	✕
✕	✕	✕	✕	✕	✕	✕
✕	✕	✕	✕	0	0	0
0	0	0	0	0	0	0

0	0	0	0	0	0	0
0	0	0	0	0	0	0
0	0	0	0	0	0	0

✓	✓	✓	✓	✓	✓	✓
✓	✓	✓	✓	✓	✓	✓
✕	✕	✕	✕	✕	✕	✕
0	0	0	0	0	0	0
✕	✕	✕	✕	✕	✕	✕
0	0	0	0	0	0	0
✕	✕	✕	✕	✕	✕	✕

0	0	0	0	0	0	0
0	0	0	0	0	0	0
0	0	0	0	0	0	0
✕	✕	✕	✕	✕	✕	✕
✕	✕	✕	✕	✕	✕	✕
✕	✕	✕	✕	✕	✕	✕
✕	✕	✕	✕	✕	✕	✕

✕	✕	✕	✕	✕	✕	✕
✕	✕	✕	✕	✓	✓	✓
✕	✕	✕	✕	✕	✕	✕
0	0	0	0	0	0	0

0	0	0	0	0	0	0
✕	✕	✕	✓	✕	✓	✓
0	0	0	0	0	0	0
0	0	0	0	0	0	0
✕	✕	✕	✕	✕	✕	✕
✕	✕	✕	✕	✕	✕	✕
✕	✕	✕	✕	✕	✕	✕
✕	✕	✕	✕	✕	✕	✕

✕	✕	✕	✕	✕	✕	✕
---	---	---	---	---	---	---

THE RYEDALE

28' X 10' 2 BED	32' X 10' 2 BED	36' X 10' 3 BED	28' X 12' 2 BED	32' X 12' 2 BED	36' X 12' 2 BED	36' X 12' 3 BED	39' X 12' 3 BED
-----------------	-----------------	-----------------	-----------------	-----------------	-----------------	-----------------	-----------------

✓	✓	✓	✓	✓	✓	✓	✓
0	0	0	0	0	0	0	0
0	0	0	0	0	0	0	0
✕	✕	✕	✕	✕	✕	✕	✕
✕	✕	✕	✕	✕	✕	✕	✕
✕	✕	✕	✕	✕	✕	✕	✕
✕	✕	✕	✕	✕	✕	✕	✕
✕	✕	✕	✕	0	0	0	0
0	0	0	0	0	0	0	0

0	0	0	0	0	0	0	0
0	0	0	0	0	0	0	0
0	0	0	0	0	0	0	0

✓	✓	✓	✓	✓	✓	✓	✓
✓	✓	✓	✓	✓	✓	✓	✓
✕	✕	✕	✕	✕	✕	✕	✕
0	0	0	0	0	0	0	0
✕	✕	✕	✕	✕	✕	✕	✕
0	0	0	0	0	0	0	0
✕	0	0	✕	✕	0	0	0

✓	✓	✓	✓	✓	✓	✓	✓
0	0	0	0	0	0	0	0
0	0	0	0	0	0	0	0
0	0	0	0	0	0	0	0
✕	✕	✕	✕	✕	✕	✕	✕
✕	✕	✕	✕	✕	✕	✕	✕
✕	✕	✕	✕	✕	✕	✕	✕

✕	✕	✕	✕	✕	✕	✕	✕
✕	✕	✕	✕	✓	✓	✓	✓
✕	✕	✕	✕	✕	✕	✕	✕
✓	✓	✓	✓	✓	✓	✓	✓

0	0	0	0	0	0	0	0
✕	✓	✓	✕	✓	✓	✕	✕
0	0	0	0	0	0	0	0
0	0	0	0	0	0	0	0
✕	✕	✕	✕	✕	✕	✕	✕
✕	✕	✕	✕	✕	✕	✕	✕
✕	✕	✕	✕	✕	✕	✕	✕
✕	✕	✕	✕	✕	✕	✕	✕

✕	✕	✕	✕	✕	✕	✕	✕
---	---	---	---	---	---	---	---



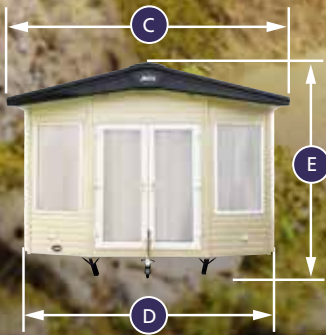
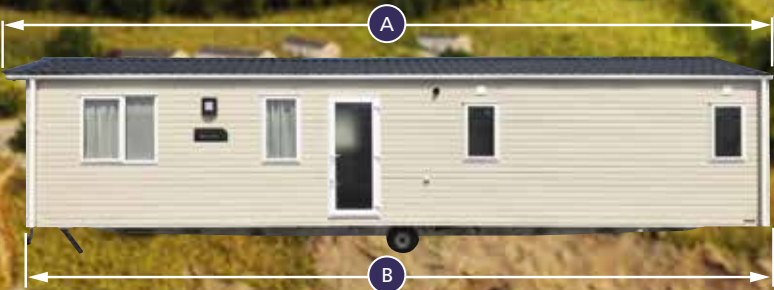
THE WIMBLEDON			THE BLENHEIM			THE BEVERLEY			THE DERWENT	THE WINDERMERE		THE LANGDALE		THE AMBLESIDE		THE BEAUMONT		THE WESTWOOD	THE WESTWOOD LODGE
36' X 12' 2 BED	38' X 12' 2 BED	39' X 12' 3 BED	37' X 12' 2 BED	39' X 12' 2 BED	40' X 12' 3 BED	36' X 12' 2 BED	39' X 12' 2 BED	40' X 12' 3 BED	38' X 12' 2 BED WCF	40' X 12' 2 BED	40' X 12' 3 BED	40' X 13' 2 BED	41' X 13' 3 BED	40' X 13' 2 BED	41' X 13' 3 BED	42' X 14' 2 BED	42' X 14' 3 BED	43' X 13' 2 BED	43' X 14' 2 BED
✓	✓	✓	✓	✓	✓	✓	✓	✓	✓	✓	✓	X	X	X	X	X	X	X	X
O	O	O	O	O	O	O	O	O	O	O	O	✓	✓	✓	✓	X	X	X	X
O	O	O	O	O	O	O	O	O	O	O	O	O	O	O	O	X	X	X	X
X	X	X	X	X	X	X	X	X	X	X	X	X	X	X	X	✓	✓	✓	✓
X	X	X	X	X	X	X	X	X	X	X	X	X	X	O	O	✓	✓	✓	✓
X	X	X	X	X	X	X	X	X	X	X	X	O	O	O	O	O	O	O	O
✓	✓	✓	✓	✓	✓	✓	✓	✓	✓	✓	✓	✓	✓	✓	✓	✓	✓	✓	✓
O	O	O	O	O	O	O	O	O	O	O	O	✓	✓	✓	✓	✓	✓	✓	✓
O	O	O	O	O	O	O	O	O	O	O	O	✓	✓	✓	✓	✓	✓	✓	✓
O	O	O	O	O	O	O	O	O	O	O	O	X	X	X	X	X	X	X	X
O	O	O	O	O	O	O	O	O	O	O	O	✓	✓	✓	✓	✓	✓	✓	✓
O	O	O	O	O	O	O	O	O	O	✓	✓	✓	✓	✓	✓	✓	✓	✓	✓
✓	✓	✓	✓	✓	✓	✓	✓	✓	✓	✓	✓	✓	✓	✓	✓	✓	✓	✓	✓
O	O	O	O	O	O	O	O	O	✓	✓	✓	✓	✓	✓	✓	✓	✓	✓	✓
O	O	O	O	O	O	O	O	O	X	O	O	O	O	O	O	O	O	O	O
✓	✓	✓	✓	✓	✓	✓	✓	✓	✓	✓	✓	✓	✓	✓	✓	✓	✓	✓	✓
X	X	X	X	X	X	X	X	X	✓	X	X	X	X	X	X	X	X	X	X
✓	✓	✓	O	O	O	✓	✓	✓	✓	✓	✓	✓	✓	✓	✓	✓	✓	✓	✓
X	X	X	✓	✓	✓	X	X	X	X	X	X	X	X	X	X	X	X	X	X
✓	✓	✓	✓	✓	✓	✓	✓	✓	✓	✓	✓	✓	✓	✓	✓	✓	✓	✓	✓
✓	✓	✓	✓	✓	✓	✓	✓	✓	✓	✓	✓	✓	✓	✓	✓	✓	✓	✓	✓
O	O	O	O	O	O	O	O	O	X	X	X	X	X	X	X	X	X	X	X
O	O	O	O	O	O	O	O	O	O	✓	✓	✓	✓	✓	✓	✓	✓	✓	✓
O	O	O	O	O	O	O	O	O	O	O	O	O	O	O	O	O	O	O	O
X	X	X	X	X	X	X	X	X	X	X	X	X	X	X	X	O	O	X	X
X	X	X	X	X	X	O	O	O	X	O	O	O	O	O	O	✓	✓	✓	✓
X	X	X	X	X	X	O	O	O	X	O	O	O	O	O	O	O	O	O	O
X	X	X	X	X	X	X	✓	X	X	X	X	X	X	X	X	✓	X	X	X
✓	✓	✓	✓	✓	✓	✓	✓	✓	✓	✓	✓	✓	✓	✓	✓	✓	✓	✓	✓
✓	✓	✓	✓	✓	✓	✓	✓	✓	✓	✓	✓	✓	✓	✓	✓	✓	✓	✓	✓
✓	✓	X	✓	✓	X	✓	✓	X	X	✓	X	✓	X	✓	X	✓	✓	✓	✓
O	O	O	O	O	O	O	O	O	O	✓	✓	✓	✓	✓	✓	O	O	O	O
O	O	O	O	O	O	O	O	O	O	O	O	O	O	O	O	O	O	O	O
✓	✓	✓	✓	✓	✓	✓	✓	✓	X	✓	✓	✓	✓	✓	✓	✓	✓	✓	✓
✓	✓	✓	✓	✓	✓	✓	✓	✓	✓	✓	✓	✓	✓	✓	✓	✓	✓	✓	✓
✓	✓	✓	✓	✓	✓	✓	✓	✓	✓	✓	✓	✓	✓	✓	✓	✓	✓	✓	✓
X	X	X	X	X	X	X	X	X	X	X	X	O	O	O	O	O	O	O	O



External Dimensions.

MODEL	A	B	C	D	E
THE COWORTH 28' X 10' 2 BED	9.000	8.700	3.340	3.070	3.410
THE COWORTH 32' X 10' 2 BED	10.220	9.920	3.340	3.070	3.410
THE COWORTH 36' X 10' 3 BED	11.440	11.140	3.340	3.070	3.410
THE COWORTH 28' X 12' 2 BED	9.000	8.700	3.950	3.680	3.410
THE COWORTH 32' X 12' 2 BED	10.220	9.920	3.950	3.680	3.410
THE COWORTH 36' X 12' 2 BED	11.440	11.140	3.950	3.680	3.410
THE COWORTH 36' X 12' 3 BED	11.440	11.140	3.950	3.680	3.410
THE RYEDALE 28' X 10' 2 BED	9.040	8.700	3.340	3.070	3.410
THE RYEDALE 32' X 10' 2 BED	10.250	9.920	3.340	3.070	3.410
THE RYEDALE 36' X 10' 3 BED	11.470	11.140	3.340	3.070	3.410
THE RYEDALE 28' X 12' 2 BED	9.040	8.700	3.950	3.680	3.410
THE RYEDALE 32' X 12' 2 BED	10.250	9.920	3.950	3.680	3.410
THE RYEDALE 36' X 12' 2 BED	11.470	11.140	3.950	3.680	3.410
THE RYEDALE 36' X 12' 3 BED	11.470	11.140	3.950	3.680	3.410
THE RYEDALE 39' X 12' 3 BED	12.360	12.030	3.950	3.680	3.410
THE WIMBLEDON 36' X 12' 2 BED	11.530	11.200	4.010	3.740	3.410
THE WIMBLEDON 38' X 12' 2 BED	12.140	11.810	4.010	3.740	3.410
THE WIMBLEDON 39' X 12' 3 BED	12.450	12.120	4.010	3.740	3.410
THE BLENHEIM 37' X 12' 2 BED	11.351	11.280	3.950	3.680	3.410
THE BLENHEIM 39' X 12' 2 BED	11.958	11.887	3.950	3.680	3.410
THE BLENHEIM 40' X 12' 3 BED	12.291	12.200	3.950	3.680	3.410
THE BEVERLEY 36' X 12' 2 BED	11.284	10.972	3.950	3.680	3.410
THE BEVERLEY 39' X 12' 2 BED	12.199	11.887	3.950	3.680	3.410
THE BEVERLEY 40' X 12' 3 BED	12.565	12.344	3.950	3.680	3.410
THE DERWENT WCF 38' X 12' 2 BED	11.990	11.656	4.010	3.740	3.410
THE WINDERMERE 40' X 12' 2 BED	12.580	12.280	3.950	3.680	3.410
THE WINDERMERE 40' X 12' 3 BED	12.580	12.280	3.950	3.680	3.410
THE LANGDALE 40' X 13' 2 BED	12.700	12.360	4.250	3.980	3.410
THE LANGDALE 41' X 13' 3 BED	13.010	12.670	4.250	3.980	3.410
THE AMBLESIDE 40' X 13' 2 BED	12.581	12.301	4.250	3.980	3.410
THE AMBLESIDE 41' X 13' 3 BED	12.863	12.570	4.250	3.980	3.410
THE AMBLESIDE PREMIER 40' X 14' 2 BED	12.581	12.301	4.580	4.310	3.446
THE AMBLESIDE PREMIER 41' X 14' 3 BED	12.863	12.570	4.580	4.310	3.446
THE BEAUMONT 42' X 14' 2 BED	13.220	12.920	4.580	4.310	3.446
THE BEAUMONT 42' X 14' 3 BED	13.220	12.920	4.580	4.310	3.446
THE WESTWOOD 43' X 13' 2 BED	13.508	13.157	4.280	4.010	3.410
THE WESTWOOD LODGE 43' X 14' 2 BED	13.508	13.157	4.580	4.310	3.446

Key to External Dimensions.



- A** Overall length excluding detachable towbar (+/-50mm)
- B** Body length at floor level (+/-10mm)
- C** Overall width including gutters & downpipes (+/-10mm)
- D** Width at floor level (+/-10mm)
- E** Height to apex of roof (+/-50mm)



## PEACE OF MIND

The level of care, craftsmanship and attention to detail that goes into each holiday home we build is something we pride ourselves upon.

That's why we insist on providing warranties that offer unrivalled protection because, in the unlikely event that something does go wrong, both our reputation for quality and our commitment to you are our priority.

It's this combination of uncompromising quality, stringent checks and customer focused care that has seen us become the UK's best-loved holiday home manufacturer, giving you complete peace of mind from start to finish.

From the moment you take ownership of your ABI, everything inside is covered by a 12-month parts and labour warranty as standard. But it doesn't end there...



### 3 YEAR WARRANTY\*

After the first year, you'll enjoy a further 24 months' cover on:

- Furniture manufactured and fitted by us
- Shower cubicle, topper and door
- Taps, sanitaryware and baths
- Radiators, internal doors and door handles
- Gutters, downpipes and cladding
- Sockets and switches
- Kitchen sink
- Dining table and chairs



### 5 YEAR WARRANTY\*

After the first year, you'll enjoy an extra 48 months' structural warranty on:

- Chassis, roof, walls, ceiling, floors and external windows and doors



### 10 YEAR WARRANTY\*

In addition to all this, fully galvanised heavy-duty chassis systems are covered by a full 10-year warranty from the date of purchase.

We are the first holiday home manufacturer in the UK to become an accredited Living Wage Employer.

We also support a variety of charities and local causes to help the community where we're based.



## OPTIONAL WINTER PACKS

Winter packs keep your holiday home cosy during colder spells.

OPTIONAL  
WINTER  
PACKS

To ensure your holiday home stays cosy and warm in the winter months, we offer the choice of two winter packs.

### Winter Premium:

- 'Low E' PVCu Thermaglass double glazing
- Domestic central heating
- Exterior light

### Winter Electric:

- 'Low E' PVCu Thermaglass double glazing
- 300W heaters in all bedrooms
- S-shaped towel rail in bathroom
- Exterior light

## OPTIONAL RESIDENTIAL SPECIFICATION BS3632

OPTIONAL  
Residential  
specification  
BS3632

For 2020 certain models are available to be built to BS3632 residential specification. Where a BS3632 build is chosen, the following is included within the option as standard:

- Fully galvanised heavy-duty chassis
- Residential levels of ventilation
- 'Low E' high performance glass fitted to all doors and windows
- Full condensing boiler gas central heating
- Residential standard levels of insulation fitted to walls to meet required 'u' values
- Residential standard levels of insulation fitted to floors to meet required 'u' values
- Residential standard levels of insulation fitted to the roof to meet required 'u' values
- Sound insulation to the exterior to meet required sound reduction values

## LEADING THE WAY WITH THERMAL EFFICIENCY

At ABI we pride ourselves on creating holiday homes that have a high thermal performance. For 2020, our technical experts have worked hard to ensure our holiday homes continue to be thermally efficient.

The content of the brochure is as accurate as possible from information available at the time of going to print. ABI (UK) Ltd. reserves the right to alter specifications, prices and model ranges as materials and conditions demand and can accept no responsibility for discrepancies between this information and subsequent models. Models do not reflect any individual holiday homes. All ABI holiday homes are built to comply with the relevant codes of practice required by the National Caravan Council Certification Scheme (EN1647) and therefore are designed for holiday use and not full time residential occupancy. Holiday homes built to BS3632 standard are for residential use. ABI (UK) Ltd. advise you to contact your nearest dealership to check features, options, specifications and availability prior to ordering.

\*Terms, conditions and exclusions apply. Please refer to the ABI Warranty booklet supplied with your ABI holiday home.

To find your nearest approved ABI dealership or park, visit [www.abiuk.co.uk](http://www.abiuk.co.uk)



ABIHolidayHomes



# ADD THAT FINISHING TOUCH...

...a beautiful, practical, low maintenance deck



**Make the most of the space outside your ABI holiday home with AB Sundecks. Choose the sundeck that means you won't have to spend a second on tedious, expensive maintenance.**

A beautiful deck really enhances your ABI holiday home. It provides a safe playground for children, a secure place for pets or simply somewhere to sit and relax with a drink and a bite to eat.

Traditional wooden decking leaves owners with the chores of cleaning, staining and painting, year after year, not to mention the problems of rotting, splitting and warping. But AB Sundecks use strong, wood-free boarding on sturdy galvanised steel sub-frames for a long, weather-proof and low maintenance life.

Every deck is perfectly co-ordinated to the design you choose and matching accessories provide the ideal finishing touches.

These long-life, easy-care decks make a delightful addition to any ABI holiday home. It's a space that you'll enjoy for years and years to come.



## Our many special features include:

- Holiday home skirting
- Built in lighting
- Hot tub decking
- Glass balustrading
- Access ramps
- Replica aged weatherboards

For a free brochure  
call now 01204 709 029

[www.absundecks.co.uk](http://www.absundecks.co.uk) [info@absundecks.co.uk](mailto:info@absundecks.co.uk)





Northern Ireland    North West England

## Northern Ireland

**Sandycove Holiday Homes**  
Ballywalter, Co. Down  
BT22 2LA  
028 4275 8200  
[sandycove.co.uk](http://sandycove.co.uk)

## Ireland

**Johnstons' Caravans**  
Letterkenny, Co. Donegal  
Ireland  
00353 74912 24 96  
[johnstonscaravans.ie](http://johnstonscaravans.ie)

## Central England

**Salop Leisure Limited**  
Shrewsbury SY5 6QS  
01743 282400  
[salopleisure.co.uk](http://salopleisure.co.uk)

**Salop Leisure Limited**  
**Stourport on Severn**  
**DY13 9QB**  
**01299 871361**  
**salopleisure.co.uk**

## South West England

**Surf Bay Leisure**  
**Winkleigh, Devon**  
**EX19 8DW**  
**01837 680100**  
**[surfbayleisure.co.uk](http://surfbayleisure.co.uk)**

**Surf Bay Leisure**  
Brean, Somerset TA8 2RP  
01278 751171  
[surfbayleisure.co.uk](http://surfbayleisure.co.uk)

**Surf Bay Leisure**  
Bridport DT6 3EX  
01308 427444  
[surfbayleisure.co.uk](http://surfbayleisure.co.uk)

**Harrison Leisure Ltd**  
**Southport PR9 8DF**  
**01704 215430**  
**[newstaticsforsale.co.uk](http://newstaticsforsale.co.uk)**

Lake Coast and Dale Leisure  
Carnforth  
Lancashire LA5 9RF  
01524 727950  
[lakecoastanddale.co.uk](http://lakecoastanddale.co.uk)

**Kendal Caravans Ltd**  
**Selside**  
**Kendal, Cumbria LA8 9LF**  
**01539 823659**  
**kendalcaravans.co.uk**

**Westfield Caravans  
& Holiday Homes  
Blackpool FY3 7XQ  
01253 301505  
westfieldcaravans.co.uk**

## Wales

**Broughton Leisure  
Narberth  
Pembrokeshire  
SA68 0NY  
01834 891444  
broughtonleisure.co.uk**

**Lloyds Caravan  
Sales Ltd  
Pensarn  
Abergele, Conwy  
LL22 7PW  
01745 832050  
lloydscaravans.co.uk**

**Mon Caravans**  
Amlwch  
Anglesey  
LL68 9TG  
01407 831138  
[moncaravans.com](http://moncaravans.com)

**Roy Kellett Caravans**  
**Towyn**  
**Abergele**  
**Conwy LL22 9NW**  
**01745 350043**  
**roykellettcaravans.com**

**Salop Leisure Limited**  
**Machynlleth SY20 8EG**  
**01654 705900**  
**salopleisure.co.uk**



## North East England

**Highfield Caravans**  
Bridlington YO16 4SJ  
01262 424242  
[highfield-caravans.co.uk](http://highfield-caravans.co.uk)

**Ideal Caravans**  
Langley Moor  
Durham DH7 8HA  
01913 780146  
[idealcaravans.co.uk](http://idealcaravans.co.uk)

**Ideal Caravans**  
Morpeth  
Northumberland NE61 6DG  
01670 515530  
idealcaravans.co.uk

**Ideal Caravans**  
**Belford**  
**Northumberland NE70 7JU**  
**08452 419646**  
**[idealcaravans.co.uk](http://idealcaravans.co.uk)**

## East England

**M.T. McDonnell & Co**  
Kings Lynn  
Norfolk PE32 1RB  
01553 636243  
[mcdonnellcaravans.co.uk](http://mcdonnellcaravans.co.uk)

**Seymours Caravan Sales**  
**Skegness PE25 1RB**  
**01754 764270**  
**seymourscaravans.co.uk**

Wells Leisure  
Wells-next-the-sea NR23 1LY  
01328 710166  
parklands-leisure.com

## South East England

**Amber Leisure  
Clacton  
Essex CO16 8HE  
01255 821190  
amberleisure.com**

**Roundstone Caravans**  
**Horsham**  
**West Sussex RH13 9JG**  
**01403 730218**  
**roundstonecaravans.com**

Enjoy an ABI life.





Discover the new 2020 Collection or find your nearest dealership/park at [www.abiuk.co.uk](http://www.abiuk.co.uk)

To speak to us please telephone +44 (0) 1482 678000 or email us at [info@abiuk.co.uk](mailto:info@abiuk.co.uk)