



Because the little things matter

Enjoy an ABI life

HOLIDAY HOMES | 2025 COLLECTION





# The unforgettable joy and wonder of simple moments

The freshness of a crisp morning  
snuggled in stillness. Dewy grass on bare  
toes and light birdsong in the air with  
where-to-explore-today anticipation.  
The energy of fun-filled days ending with  
cosy nights bathed in stars. Adventuring  
in the wilderness or getting lost in a good  
book, every moment of an ABI break is  
filled with life's simple pleasures.

Open up a world of wonderful  
experiences with our holiday homes.

One destination. Limitless experiences.	4-5
Loads to feel good about	6-7
Details that make your ABI	8-9
Building the best experiences	10-11
Our 2025 Collection	12-83
The Coworth	12-17
The Keswick	18-23
The Wimbledon	24-29
The St David	30-35
The Beverley	36-41
The Derwent	42-47
The Windermere	48-53
The Ingleton	54-59
The Langdale	60-65
The Ambleside	66-71
The Beaumont Lodge	72-77
The Westwood Lodge	78-83
Key features & specifications	84-87



# One destination. Limitless experiences.

**A jewel of a holiday destination, this island we call home holds many hidden treasures. Wild and energetic, tranquil and picturesque, every element creates a unique backdrop for an unforgettable break. Whatever holidaying looks like, there is a corner of the beautiful UK landscape for everyone.**

Great Britain is an inspiring and unique wonder of the world that never fails to amaze and enchant. With landscapes that leave you in awe and the warmth and charm of the familiar, you will always find your place, no matter where you are. A meander through a sleepy town or a hike with a breathtaking backdrop are never far away. There's no doubt that the variety and diversity available on our doorstep is abundant.

From Windermere to Loch Lomond, the full beauty of the UK and all its hidden gems are just waiting to be discovered.

From the gentle landscapes of the Cotswolds, to the architectural wonders of Edinburgh's Royal Mile, to the beauty of our botanical gardens, the choices are endless.

Wild swimming or the roar of a fire, paddleboarding or café-hopping, every adventure is unique. Wherever you are, you can kick back, relax, and absorb the full splendour of this isle. That's the beauty of the UK break, you never know where it will take you next.

*"From Windermere to Loch Lomond, the full beauty of the UK and all its hidden gems are just waiting to be discovered."*



# Loads to feel good about.

On top of all the little things we do to make you feel good every time you step inside your ABI, we're also doing good beyond your holiday home. From helping charities, to looking after our planet and our people. Hopefully, it'll put even more of a smile on your face.

## Doing good for the planet



From how thermally efficient our holiday homes are, to offsetting carbon, even how we make this very brochure, we've got our green hat on. We are committed to doing our bit to protect this planet, hopefully for staycations in many years to come.



## Good deeds for charities

Our ABI team pick four charities local to our East Yorkshire home to support. We work with each of our charities for two years and we're now entering our second year with Aim Higher, Abbie's Fund, Dan Kitching35 and Dove House Hospice.

We're honoured to support our chosen charities and to be able to provide updates on how the donations make a real difference year-on-year.

## Dove House Hospice update

In March, we completed the renovation of one of our ABI holiday homes, which had been donated to our charity partner Dove House Hospice many years ago. To further support this charity's work, we held a staff raffle in our factory and gave someone the chance to win a retro ABI Hull FC shirt. We raised money for a worthy cause and increased awareness in order to support the excellent care for people in the local community with life-limiting illnesses.

Every donation supports a range of amazing work, from helping support local people and their families, to creating better opportunities for those who need it.

## Offsetting the carbon of every ABI build



For every ABI we build, we plant a tree in the UK and support Carbon Neutral Organisation projects around the world. We aim to reduce the impact of carbon emissions generated during our production process.

The trees we plant here in the UK, in conjunction with schools across the country, offset the carbon created by manufacturing each holiday home over the tree's lifetime.

The other projects we support around the world immediately offset any carbon created when we build your ABI.



## A greener brochure

Every page you'll turn in this brochure is a piece of carbon balanced paper.

That means the emissions created in the process of making the paper have been offset (or balanced) through the World Land Trust. Every page is a good'un, in a green sense.

## Good to our people

We were the first holiday home manufacturer in the UK to become an accredited Living Wage Employer.



## Thermally efficient holidaying

We pride ourselves on creating holiday homes that have a high thermal performance, and not just for your comfort. Our technical experts dedicate their efforts to making your holiday home as thermally efficient as possible, which is good news for the environment too.



# Details that make your ABI.

We put a lot of thought into how people stay, play and holiday in our ABIs. Everything is considered, from the moment you wake up to the second your head touches that pillow, because we know it's the little things that really make your experience.

## 1 Cosy stays

Experience contentment all year round. 'Low E' PVCu Thermaglass double glazing, 100mm roof insulation, central heating and electric fires, to keep your ABI comfortable in summer and cosy in winter.

## 2 The best views

Bring the great outdoor experience right into your ABI with patio doors, panoramic glass fronts and large windows to immerse yourself in the beauty of your natural surroundings.

## 3 Little luxuries

It's the little 'I wouldn't have thought of that' details that make a big difference. Find USB sockets and Bluetooth sound systems in some of our holiday homes to make your ABI a more luxurious experience.

## 4 Secure living

Feel comforted and secure in the knowledge that we are installing the latest technology into your home, such as hard wired smoke detectors, CO alarms and electrical circuit safety devices.

## 5 Eco-friendly ideas

Experience guilt-free sustainable living with your ABI. Every product and practice is designed with sustainability in mind, featuring 'Low E' PVCu Thermaglass double glazing, energy-efficient LED bulbs and water-saving technology. Helping align lifestyle choices with a greener future.

## 6 Great nights

Sleep soundly with our sumptuous crib 5 mattresses as standard. Deluxe pocket-sprung upgrades for a sleep experience to snuggle, snooze and sink yourself into.

## 7 Homely touches

The comfort of home with added luxury. 7ft high walls and vaulted ceilings, as well as the simple, satisfying details that may be overlooked like soft closers and cosy carpet underlay. All designed to make your holiday an elevated home-from-home experience.



We believe it's the little things, details that are small, simple, forgettable even, that make an ABI experience special. It's those little touches that make a big difference because they're so thoughtfully conceived.

SUPERIOR  
QUALITY  
& SERVICE

MADE IN  
BRITAIN

FACTORY  
Approved



# Building the best experiences.



No end of thoughtful ideas. High-quality materials, hours and hours of dedicated craft, rigorous testing and checks - that's what goes into building your holiday home.

No matter which ABI you choose, all of these features are included as standard:

- ✓ 100mm insulation in roof
- ✓ Upgraded external walls with 50mm insulation (except The Coworth)
- ✓ Domestic gutters and downpipes
- ✓ Domestic style internal doors
- ✓ Domestic mattresses (3 times more filling and more durable covering)
- ✓ Crib 5 mattresses throughout
- ✓ Domestic twin cavity oven with electric ignition
- ✓ Electric fire (except The Coworth)
- ✓ Thermostatic shower mixer valve
- ✓ Underlay in carpeted area (except The Coworth bedrooms)
- ✓ Low energy bulbs throughout and LED bulbs in all spotlights
- ✓ Lined curtains (except The Coworth)
- ✓ Pull out bed in lounge
- ✓ Steel pantile roof
- ✓ Hard wired smoke detector
- ✓ Carbon monoxide detector x2
- ✓ Fire extinguisher
- ✓ Fire blanket
- ✓ Escape windows

You can make your ABI even more special by adding further options, see pages 84 & 85.







Shows Deluxe Pack and optional front sliding door, see page 17

# The Coworth

Settling in has never been cosier. Nestle in the nook area of the kitchen diner for a ponder over a puzzle, or gather in the buzz of a living room get-together. It's easy to switch off with the relaxing colour scheme - you'll be enjoying the fun of this family holiday home in no time.





Shows Deluxe Pack, see page 17



Shows Deluxe Pack, see page 17



Shows Deluxe Pack, see page 17



Shows Deluxe Pack, see page 17



Shows Deluxe Pack, see page 17

## Relaxation with all of your home comforts

Please note: Some items featured in this photography are scene-setting props or optional extras, not included in your purchase. Please speak to your park or dealership or refer to the 'all this included' section for this holiday home.





Shows Deluxe Pack, see page 17

## Highlights:

- Spacious family home
- 2ft 6" single beds in twin room (12ft 2 bedroom models only)
- Option to upgrade to Deluxe Pack



Shows optional front sliding door, see page 17

# The Coworth

Ready to settle into your next family break? Take your pick of eight different models, and journey towards making wonderful memories.



For more information and to take a virtual tour, visit [www.abiuk.co.uk](http://www.abiuk.co.uk)

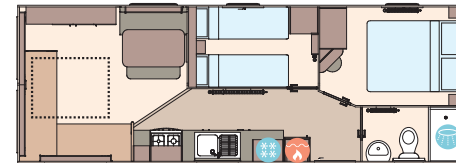
### All this included

- ✓ Matt finish Champagne aluminium cladding
- ✓ Fixed dinette seating
- ✓ Carpet underlay in lounge
- ✓ Scatter cushions in lounge
- ✓ King size bed in master bedroom (except all 10ft models and 32ft x 12ft 2 bedroom model)
- ✓ 2ft 6" single beds in twin room (12ft 2 bedroom models only)
- ✓ Separate en suite (32ft x 12ft models upwards)
- ✓ Crib 5 mattresses to all bedrooms

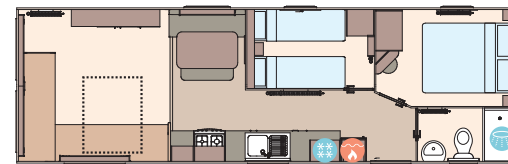
### Add any of these

- ☐ Deluxe Pack (available on 12ft models)
- ☐ Fully galvanised chassis
- ☐ 'Low E' PVCu Thermaglass double glazing
- ☐ Integrated microwave oven

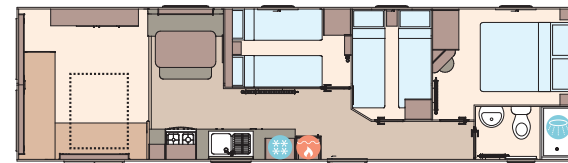
- ☐ Winter premium pack
- ☐ Winter electric pack
- ☐ Front French door or front sliding door (available on 32ft x 12ft model, both 36ft x 12ft models and 39ft x 12ft model)
- ☐ Free-standing fridge
- ☐ Free-standing or integrated fridge freezer
- ☐ Externally vented powered cooker hood
- ☐ Bathroom extractor fan
- ☐ Lift-up bed in master bedroom
- ☐ Space saver bed for twin room
- ☐ Plain duvet covers and pillowcases
- ☐ Voiles throughout
- ☐ USB socket in lounge



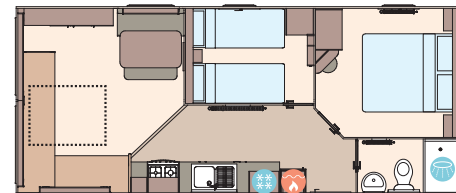
The Coworth 28ft x 10ft x 2 bedroom



The Coworth 32ft x 10ft x 2 bedroom



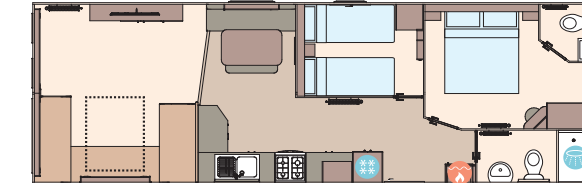
The Coworth 36ft x 10ft x 3 bedroom



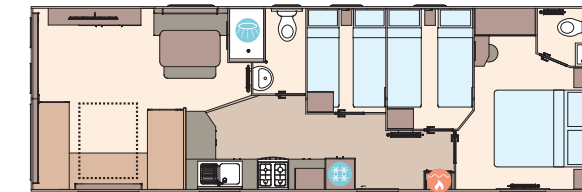
The Coworth 28ft x 12ft x 2 bedroom



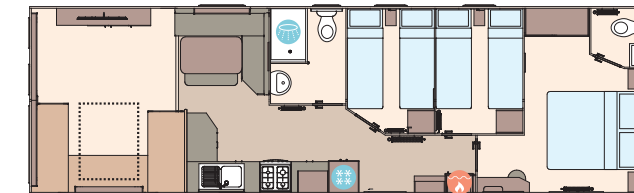
The Coworth 32ft x 12ft x 2 bedroom



The Coworth 36ft x 12ft x 2 bedroom



The Coworth 36ft x 12ft x 3 bedroom



The Coworth 39ft x 12ft x 3 bedroom

KEY: Water heater Shower Fridge/Freezer Front pull out bed

### Included in Deluxe Pack (over standard)

- Fully galvanised chassis
- Curtains on poles
- Carpet underlay throughout
- Upgraded seating including arms and fabric kickboards
- 2 way switching in master bedroom
- Extra sockets in bedrooms
- Full height glass hob splashback
- Integrated microwave oven
- Free-standing fridge freezer
- Bathroom extractor fans
- Externally vented powered cooker hood
- Kitchen upstands
- Wardrobe doors
- Upgraded TV surround

OPTIONAL  
WINTER  
PACKS  
See Page 86





# The Keswick

A vibrant and inspiring space. Bask in the warmth of the terracotta and sage tones then unwind in the spacious living area, comfortably curated with L-shaped seating for the most relaxing and satisfying of sprawls. Enjoy happy holidaying to your heart's content.





Shows L-shaped dinette option and optional front sliding door, see page 23



### *Colour and character in every corner*

Please note: Some items featured in this photography are scene-setting props or optional extras, not included in your purchase. Please speak to your park or dealership or refer to the 'all this included' section for this holiday home.







Shows L-shaped dinette option, see page 23

## Highlights:

- Updated colour scheme for 2025
- Stylishly designed holiday home for the whole family
- Low energy lighting
- Optional front doors on some models



Shows optional front sliding door, see page 23

# The Keswick

Holiday your way, with the choice of eight different models. Create a blissful break with your pick of this open-plan layout.



For more information and to take a virtual tour, visit [www.abiuk.co.uk](http://www.abiuk.co.uk)

### All this included

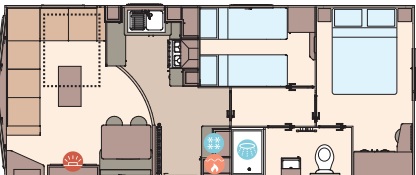
- ✓ Matt finish Champagne aluminium cladding
- ✓ Carpet underlay throughout
- ✓ Electric fire
- ✓ Scatter cushions in lounge
- ✓ Fixed dinette seating
- ✓ Externally vented powered cooker hood
- ✓ Soft-close hinges on doors and drawers in kitchen
- ✓ King size bed in master bedroom (except 28ft models and 36ft/39ft x 12ft 3 bedroom models)
- ✓ Bathroom extractor fans
- ✓ Separate second toilet (32ft x 12ft models and up)
- ✓ Shaped front bay
- ✓ USB socket in kitchen
- ✓ Coffee table (on specific models)
- ✓ Fabric headboards to all bedrooms
- ✓ Lift-up bed in master bedroom
- ✓ Crib 5 mattresses to all bedrooms
- ✓ TV point in master bedroom and 1 twin room

### Add any of these

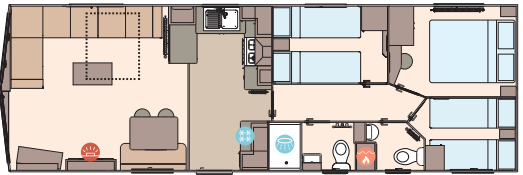
- ☐ Fully galvanised chassis
- ☐ 'Low E' PVCu Thermaglass double glazing
- ☐ Winter premium pack
- ☐ Winter electric pack
- ☐ Front French door or front sliding door (available on 32ft x 12ft model, both 36ft x 12ft models and 39ft x 12ft model)
- ☐ Free-standing dining table and chairs
- ☐ Free-standing fridge
- ☐ Free-standing or integrated fridge freezer
- ☐ Integrated microwave oven
- ☐ L-shaped dinette (specific models)
- ☐ Space saver bed for twin room
- ☐ Plain duvet covers and pillowcases
- ☐ Voiles throughout



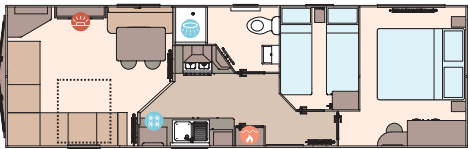
The Keswick 28ft x 10ft x 2 bedroom



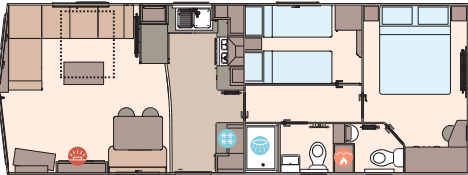
The Keswick 28ft x 12ft x 2 bedroom



The Keswick 36ft x 12ft x 3 bedroom



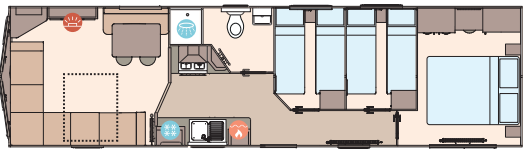
The Keswick 32ft x 10ft x 2 bedroom



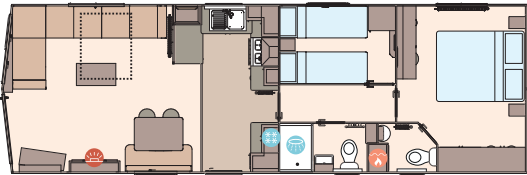
The Keswick 32ft x 12ft x 2 bedroom



The Keswick 39ft x 12ft x 3 bedroom



The Keswick 36ft x 10ft x 3 bedroom



The Keswick 36ft x 12ft x 2 bedroom

KEY: Fire Water heater Shower Fridge/Freezer Front pull out bed

OPTIONAL  
WINTER  
PACKS  
See Page 86





Shows optional armchair, see page 29

# The Wimbledon

A refreshed holiday setting. A new open-plan kitchen diner and chaise-style sofa were made for energetic gatherings and get-togethers with panache. Let the rich colour palette and playful embellishments encourage all the new memories to be made.



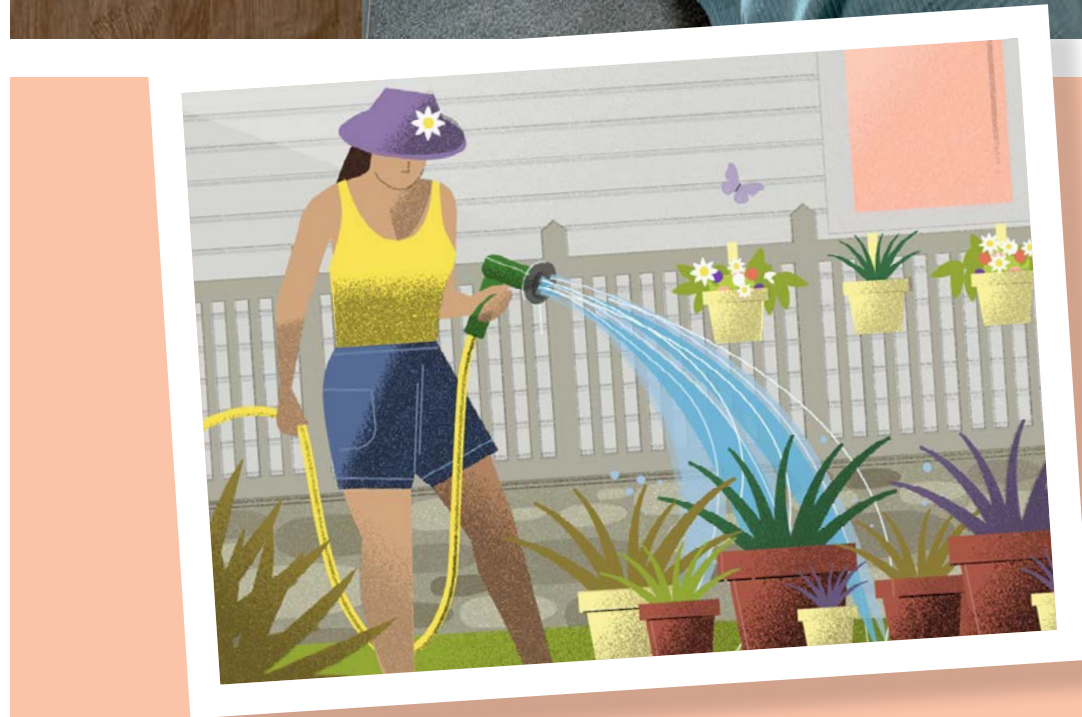


Shows optional armchair and optional full front sliding door, see page 29



### *A fun-filled family feel*

Please note: Some items featured in this photography are scene-setting props or optional extras, not included in your purchase. Please speak to your park or dealership or refer to the 'all this included' section for this holiday home.







Shows optional armchair and full front sliding door, see page 29

# The Wimbledon

A jam-packed holiday is waiting for you. Take your pick of three different layouts and let the fun begin.



For more information and to take a virtual tour, visit [www.abiuk.co.uk](http://www.abiuk.co.uk)

**All this included**

- ✓ Matt finish Champagne aluminium cladding
- ✓ Feature electric fire
- ✓ Carpet underlay throughout
- ✓ Fixed dinette seating
- ✓ Externally vented powered cooker hood
- ✓ 40mm worktops
- ✓ Soft-close hinges on doors and drawers in kitchen
- ✓ Lift-up bed in master bedroom
- ✓ King size bed in master bedroom (2 bedroom models only)
- ✓ TV point in master bedroom and one twin room
- ✓ USB sockets in all bedrooms
- ✓ USB socket in lounge
- ✓ Separate en suite toilet
- ✓ Shaver socket
- ✓ Bathroom extractor fans
- ✓ Hooks in all bathrooms
- ✓ Shaker style kitchen doors
- ✓ Crib 5 mattresses to all bedrooms
- ✓ L-Shaped dinette seating

**Add any of these**

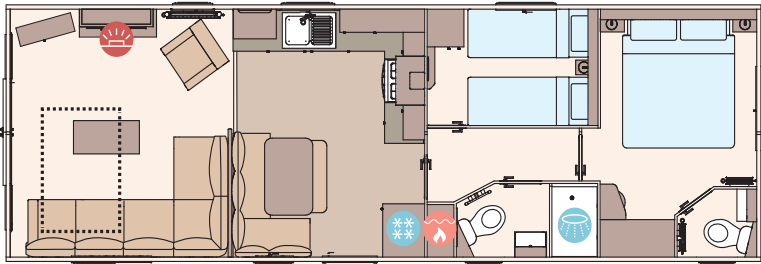
- ☐ Fully galvanised chassis
- ☐ 'Low E' PVCu Thermaglass double glazing
- ☐ Winter premium pack
- ☐ Winter electric pack
- ☐ Space saver bed for twin room
- ☐ Free-standing fridge
- ☐ Free-standing or integrated fridge freezer
- ☐ Integrated microwave oven
- ☐ 'Exclusive' pocket sprung mattresses
- ☐ Bluetooth sound system in lounge
- ☐ Scatter cushions in lounge
- ☐ Armchair (in matching dinette seating fabric)
- ☐ Voiles throughout
- ☐ Plain duvet covers and pillowcases
- ☐ Exterior door options available
- ☐ Free-standing dining table and chairs in lieu of fixed L shaped dinette
- ☐ Full front sliding door



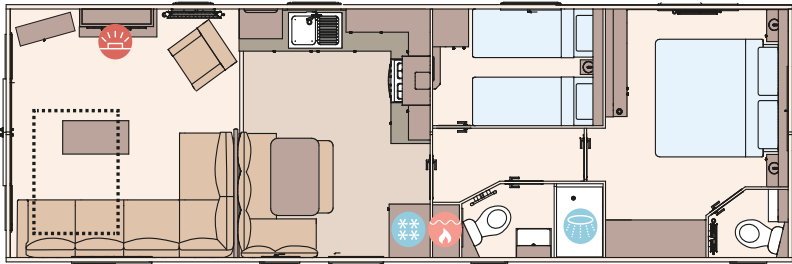
Shows optional full front sliding door, see page 29

## Highlights:

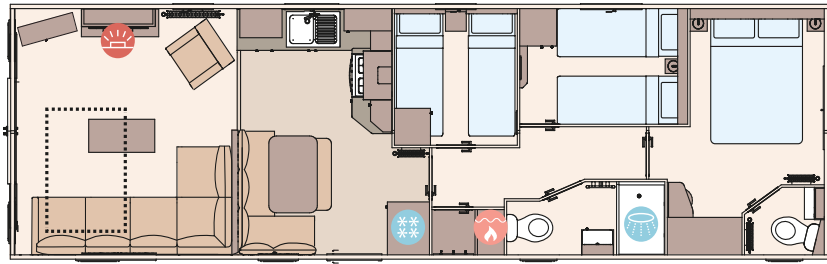
- Brand new layout and colour scheme for 2025
- Beautifully appointed shaker style kitchen
- Optional full front sliding door



The Wimbledon 37ft x 12ft x 2 bedroom



The Wimbledon 39ft x 12ft x 2 bedroom



The Wimbledon 40ft x 12ft x 3 bedroom

**KEY:**

- Fire
- Water heater
- Shower
- Fridge/Freezer
- Front pull out bed

OPTIONAL  
WINTER  
PACKS  
See Page 86





# The St David

Irresistibly laid back living awaits. Matt black features pepper the interior for an effortlessly contemporary feel. Earthy tones and natural textures provide an inviting ambience and snug sanctuary for late-night laughter and storytelling. Light the fire, pour yourself something delicious and sink into this holiday home's mystique.





*Holidaying with style and sophistication*

Please note: Some items featured in this photography are scene-setting props or optional extras, not included in your purchase. Please speak to your park or dealership or refer to the 'all this included' section for this holiday home.







# The St David

Take your pick of three irresistible layouts and enjoy a holiday home with style and sophistication built in.



For more information and to take a virtual tour, visit [www.abiuk.co.uk](http://www.abiuk.co.uk)

## All this included

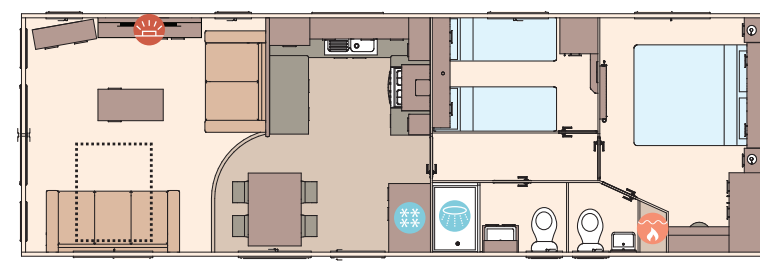
- ✓ Matt finish Champagne aluminium cladding
- ✓ Carpet underlay throughout
- ✓ Stylish light fittings with low energy bulbs
- ✓ Electric fire
- ✓ USB socket in lounge
- ✓ Additional sockets next to TV point in lounge
- ✓ Free-standing dining table and chairs
- ✓ Externally vented powered cooker hood
- ✓ 40mm worktops
- ✓ Soft-close hinges on doors and drawers in kitchen
- ✓ Lift-up bed in master bedroom
- ✓ King size bed in master bedroom (2 bedroom models only)
- ✓ TV point in master bedroom and one twin room
- ✓ USB sockets in all bedrooms
- ✓ En suite shower (38ft x 12ft 2 bedroom model only)
- ✓ Bathroom extractor fans
- ✓ Separate en suite toilet
- ✓ Hooks in all bathrooms
- ✓ Composite kitchen sink
- ✓ Coffee table with cube stool
- ✓ Crib 5 mattresses to all bedrooms

## Add any of these

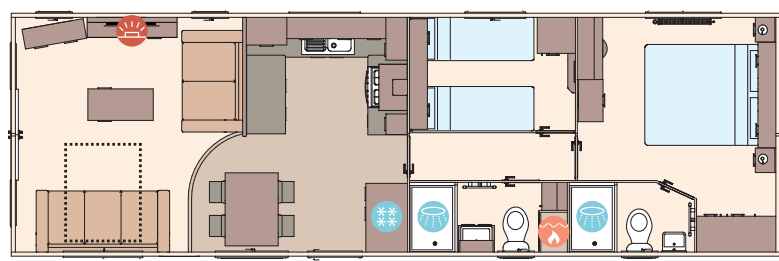
- ☐ Fully galvanised chassis
- ☐ 'Low E' PVCu Thermaglass double glazing
- ☐ Winter premium pack
- ☐ Winter electric pack
- ☐ Voiles throughout
- ☐ Free-standing fridge
- ☐ Free-standing or integrated fridge freezer
- ☐ Integrated microwave oven
- ☐ Integrated dishwasher or washing machine
- ☐ Plain duvet covers and pillowcases
- ☐ Scatter cushions in lounge
- ☐ Exterior door options available
- ☐ Bluetooth sound system in lounge
- ☐ 'Exclusive' pocket sprung mattresses
- ☐ Space saver bed (twin room only)

## Highlights:

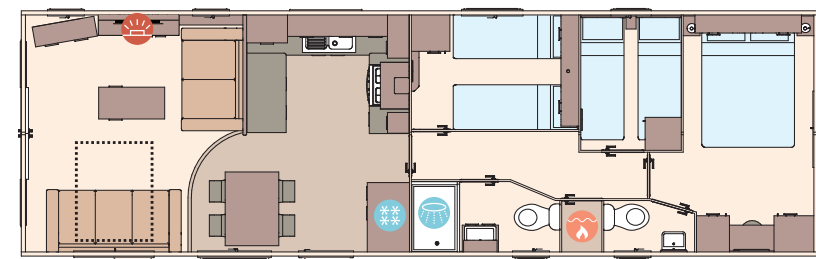
- Updated colour scheme for 2025
- Spacious family home
- All models include en suite toilet
- En suite with shower in the 38ft x 12ft 2 bedroom model
- Home-from-home styling
- Natural contemporary feature slatted wall panelling to fireplace



The St David 37ft x 12ft x 2 bedroom



The St David 38ft x 12ft x 2 bedroom



The St David 39ft x 12ft x 3 bedroom

- KEY:
- Fire
  - Water heater
  - Shower
  - Fridge/Freezer
  - Front pull out bed

OPTIONAL  
WINTER  
PACKS  
See Page 86





Shows optional full front sliding door, see page 41

# The Beverley

Holiday like you're in a boutique spa. Panelled headboards and matt black finishes ooze hotel chic. With an expansive en suite tub, dedicated dressing area and extra deep sofas, luxury relaxation comes easy here.





*Savour slow mornings in style*

Please note: Some items featured in this photography are scene-setting props or optional extras, not included in your purchase. Please speak to your park or dealership or refer to the 'all this included' section for this holiday home.







Shows optional full front sliding door, see page 41

# The Beverley

This stylish holiday home, packed with hotel-chic design details, is available in three different layouts. Simply choose the model that suits you.



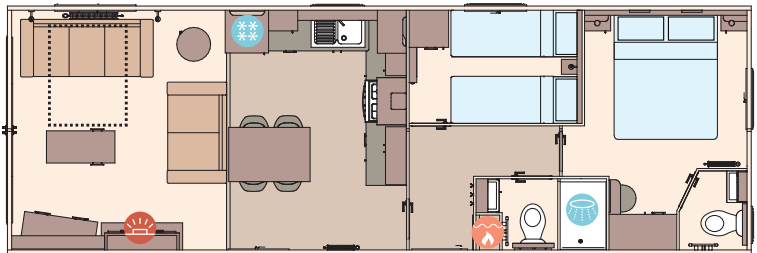
For more information and to take a virtual tour, visit [www.abiuk.co.uk](http://www.abiuk.co.uk)

### All this included

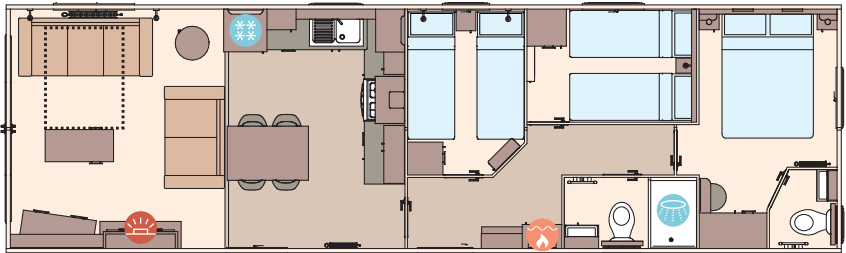
- ✓ Matt finish Chateaux grey aluminium cladding
- ✓ Carpet underlay throughout
- ✓ Stylish light fittings with low energy bulbs
- ✓ Electric fire
- ✓ USB socket in lounge
- ✓ Additional sockets next to TV point in lounge
- ✓ Free-standing dining table and chairs
- ✓ Externally vented powered cooker hood
- ✓ 40mm worktops
- ✓ Soft-close hinges on doors and drawers in kitchen
- ✓ Lift-up bed in master bedroom
- ✓ King size bed in master bedroom (2 bedroom models only)
- ✓ TV point in master bedroom and one twin room
- ✓ USB sockets in all bedrooms
- ✓ En suite with all-in-one GRP bath (39ft x 12ft 2 bedroom only)
- ✓ Shaver socket
- ✓ Bathroom extractor fans
- ✓ Separate en suite toilet
- ✓ Hooks in all bathrooms
- ✓ Composite kitchen sink
- ✓ Pictures above bed in master bedroom
- ✓ Coffee table with cube stool
- ✓ Crib 5 mattresses to all bedrooms

### Add any of these

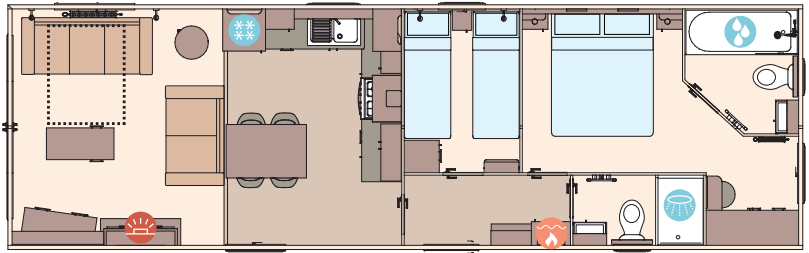
- ☐ Fully galvanised chassis
- ☐ 'Low E' PVCu Thermaglass double glazing
- ☐ Winter premium pack
- ☐ Winter electric pack
- ☐ Voiles throughout
- ☐ Free-standing fridge
- ☐ Free-standing or integrated fridge freezer
- ☐ Integrated microwave oven
- ☐ Integrated dishwasher or washing machine
- ☐ Plain duvet covers and pillowcases
- ☐ Bed runner in master bedroom
- ☐ Scatter cushions in lounge
- ☐ Full front sliding door
- ☐ Bluetooth sound system in lounge
- ☐ 'Exclusive' pocket sprung mattresses
- ☐ Space saver bed (twin room only)



The Beverley 36ft x 12ft x 2 bedroom



The Beverley 40ft x 12ft x 3 bedroom



The Beverley 39ft x 12ft x 2 bedroom

### KEY:

- Fire
- Water heater
- Shower
- Bath
- Fridge/Freezer
- Front pull out bed

## Highlights:

- Comfortable free-standing sofas
- Optional fully glazed front with sliding doors
- En suite with domestic bath (39ft x 12ft 2 bedroom model only)
- Home-from-home comforts throughout
- Contemporary radiator in lounge



Shows optional full front sliding door, see page 41

OPTIONAL  
WINTER  
PACKS  
See Page 86





# The Derwent

This is accessible holidaying at its finest. Internal sliding doors, wider entrances and lower countertops, every detail is taken care of for enjoyable and restful experiences. From the rich wooden tones to the feature fireplace, feel the warmth of the welcome from the moment you arrive.





Shows optional fixed track system patient helper, see page 47



*Where accessibility meets luxury*

Please note: Some items featured in this photography are scene-setting props or optional extras, not included in your purchase. Please speak to your park or dealership or refer to the 'all this included' section for this holiday home.







Shows optional front French door, see page 47

# The Derwent



Cleverly designed with accessible holidaying in mind, full of carefully considered features, this holiday home makes relaxation easy for everyone.



For more information and to take a virtual tour, visit [www.abiuk.co.uk](http://www.abiuk.co.uk)

- All this included**

  - ✓ Matt finish Champagne aluminium cladding
  - ✓ Carpet underlay throughout
  - ✓ Sliding internal doors
  - ✓ Separate lounge and kitchen
  - ✓ Electric fire
  - ✓ Scatter cushions in lounge
  - ✓ USB socket in lounge
  - ✓ Free-standing dining table and chairs
  - ✓ Soft-close hinges on doors and drawers in kitchen
  - ✓ Externally vented powered cooker hood
  - ✓ Lowered base units in kitchen
  - ✓ 3ft divan beds in master bedroom which can convert to a 6ft wide bed
  - ✓ TV point in master bedroom
  - ✓ Freestanding patient helper apparatus in master bedroom
  - ✓ USB sockets in all bedrooms
  - ✓ Wet room bathroom with Doc M disability equipment
  - ✓ Bathroom extractor fan
  - ✓ Widened entrance for wheelchair access
  - ✓ Pictures in lounge
  - ✓ Crib 5 mattresses to all bedrooms
- Add any of these**

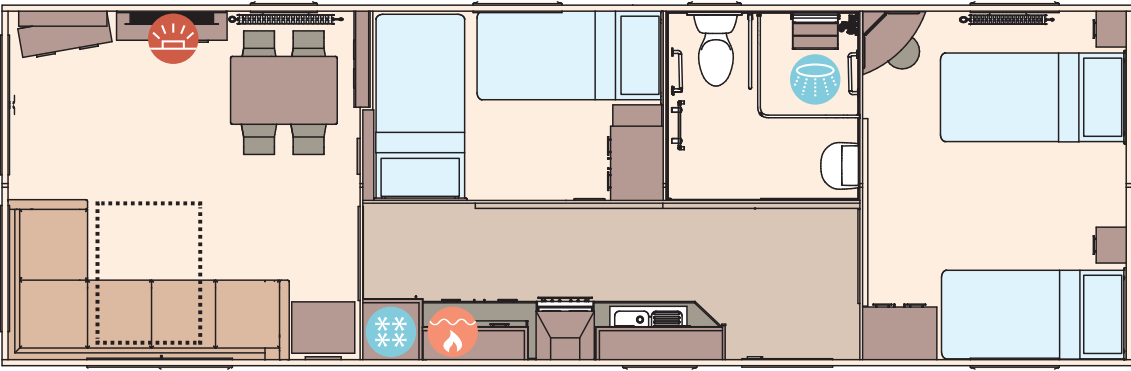
  - ☐ Fully galvanised chassis
  - ☐ 'Low E' PVCu Thermaglass double glazing
  - ☐ Winter premium pack
  - ☐ Winter electric pack
  - ☐ Voiles throughout
  - ☐ Integrated microwave oven
  - ☐ Integrated fridge freezer
  - ☐ Plain duvet covers and pillowcases
  - ☐ Standard height base units in kitchen
  - ☐ Front French door
  - ☐ Space saver bed (twin room only)
  - ☐ New fixed track system patient helper in lieu of freestanding apparatus

## Highlights:

- Optional front French door available
- Full accessibility with wider door frames throughout
- 3ft divan beds in master bedroom



Shows optional front French door, see page 47



The Derwent 38ft x 12ft x 2 bedroom

KEY: Fire Water heater Shower Fridge/Freezer Front pull out bed

OPTIONAL  
WINTER  
PACKS  
See Page 86





# The Windermere

Sink into an easy come, easy flow way of life. Restore calm in this home-from-home hideaway. New royal blue accents meander throughout, from the spacious, well-equipped kitchen to the welcoming glow of the bedside lighting. Every detail is crafted for your comfort.





*Feel right at home here*

Please note: Some items featured in this photography are scene-setting props or optional extras, not included in your purchase. Please speak to your park or dealership or refer to the 'all this included' section for this holiday home.







Shows optional full front sliding door, see page 53

### Highlights:

- Updated colour scheme for 2025
- Luxury living in 12ft and 13ft wide holiday home
- En suite with shower in the 40ft x 12ft/13ft 2 bedroom models
- Free-standing domestic-style sofas
- Spacious and contemporary kitchen with larder unit



Shows optional full front sliding door, see page 53

# The Windermere

Thoughtfully designed with the simplicity and comfort of home in mind, this holiday home is available in four different layouts. Choose the model that suits you.



For more information and to take a virtual tour, visit [www.abiuk.co.uk](http://www.abiuk.co.uk)

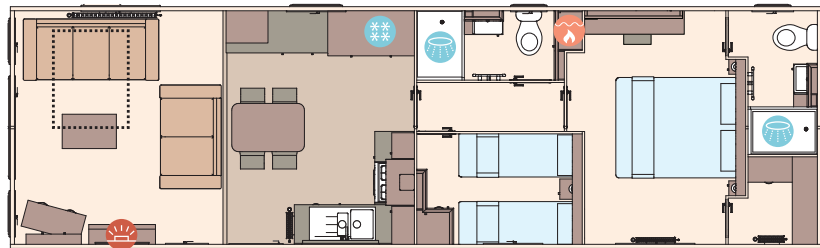
### All this included

- ✓ Matt finish Champagne aluminium cladding
- ✓ Carpet underlay throughout
- ✓ Scatter cushions in lounge
- ✓ Electric fire
- ✓ USB socket in lounge
- ✓ Additional sockets next to TV point in lounge
- ✓ Free-standing dining table and chairs
- ✓ Externally vented powered cooker hood
- ✓ Integrated fridge freezer
- ✓ 40mm worktops
- ✓ Soft-close hinges on doors and drawers in kitchen
- ✓ Lift-up bed in master bedroom
- ✓ King size bed in master bedroom (except 40ft x 12ft 3 bed model)
- ✓ TV point in master bedroom and one twin room
- ✓ Plain duvet covers and pillowcases
- ✓ Bed runner and scatter cushions on all beds
- ✓ USB sockets in all bedrooms
- ✓ Shaver socket
- ✓ Bathroom extractor fans
- ✓ Hooks in all bathrooms
- ✓ Composite kitchen sink

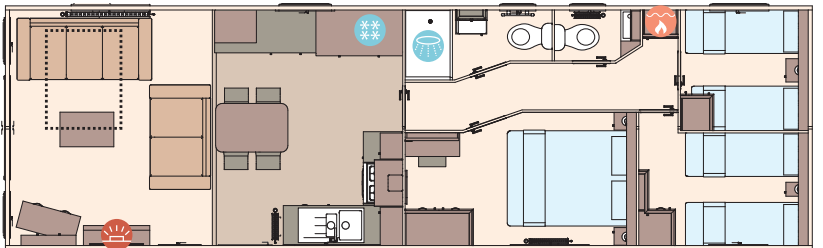
- ✓ Separate second toilet (3 bedroom models only)
- ✓ Separate en suite shower and toilet (2 bedroom models only)
- ✓ Voiles throughout
- ✓ Additional storage in walk-in robe area in master bedroom (2 bedroom model only)
- ✓ Kitchen larder unit with spice racks
- ✓ Crib 5 mattresses to all bedrooms

### Add any of these

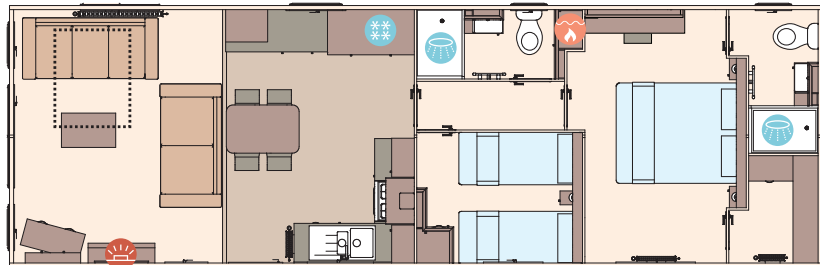
- ☐ Residential specification BS3632 (available on 13ft models only)
- ☐ Fully galvanised chassis
- ☐ 'Low E' PVCu Thermaglass double glazing
- ☐ Winter premium pack
- ☐ Winter electric pack
- ☐ Exterior door options available
- ☐ Integrated microwave oven
- ☐ Integrated dishwasher
- ☐ Integrated washing machine
- ☐ Bluetooth sound system in lounge
- ☐ 'Exclusive' pocket sprung mattresses
- ☐ Space saver bed (twin room only)



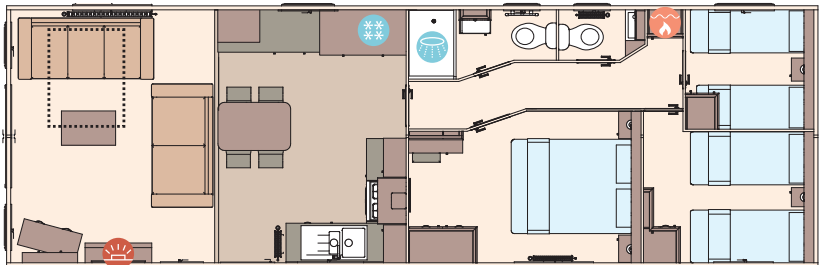
The Windermere 40ft x 12ft x 2 bedroom



The Windermere 40ft x 12ft x 3 bedroom



The Windermere Residential 40ft x 13ft x 2 bedroom



The Windermere Residential 40ft x 13ft x 3 bedroom

KEY: Fire Water heater Shower Fridge/Freezer Front pull out bed

OPTIONAL  
Residential  
specification  
BS3632  
See Page 86

OPTIONAL  
WINTER  
PACKS  
See Page 86





Shows optional Air Conditioning unit

# The Ingleton

Surround yourself within a contemporary aesthetic, thoughtfully crafted down to the finest details. Plush textures, sleek features and modern style notes give this space a chic hotel feel to savour. Select something sumptuous from the wine rack and indulge in the spaciousness of the L-shaped sofa. The wind-down is too easy here.





*Step in and chill out*

Please note: Some items featured in this photography are scene-setting props or optional extras, not included in your purchase. Please speak to your park or dealership or refer to the 'all this included' section for this holiday home.







Shows optional Air Conditioning unit

## Highlights:

- New layout and colour scheme for 2025
- New feature fireplace in lounge
- Open-plan family holiday home with breakfast bar
- Option to upgrade to BS3632 residential specification



# The Ingleton

If this holiday home's chic style is for you, there's only one decision left. Which of the two fantastic layouts will you choose?



For more information and to take a virtual tour, visit [www.abiuk.co.uk](http://www.abiuk.co.uk)

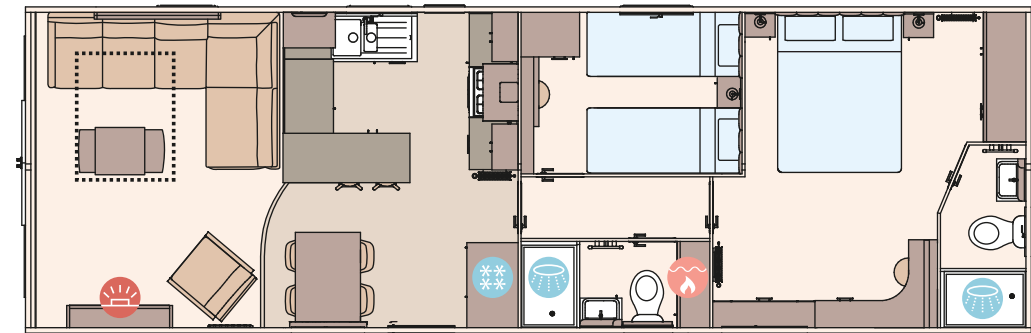
### All this included

- ✓ Matt finish Chateaux grey aluminium cladding
- ✓ Pre-galvanised twin axle chassis
- ✓ Full front sliding door
- ✓ White 'Low E' PVCu Thermaglass double glazing
- ✓ Fully condensing boiler gas central heating
- ✓ Free-standing dining table and 4 chairs
- ✓ Breakfast bar
- ✓ Breakfast style stools
- ✓ Satellite co-ax
- ✓ USB socket in lounge
- ✓ Scatter cushions in lounge
- ✓ Voiles throughout
- ✓ Soft-close hinges on doors and drawers in kitchen
- ✓ 40mm worktops
- ✓ Integrated fridge freezer
- ✓ Externally vented powered cooker hood
- ✓ Lift-up bed in master bedroom
- ✓ TV point in all bedrooms
- ✓ USB sockets in all bedrooms
- ✓ King size bed in master bedroom (2 bedroom model only)
- ✓ Separate en suite toilet and shower in all models

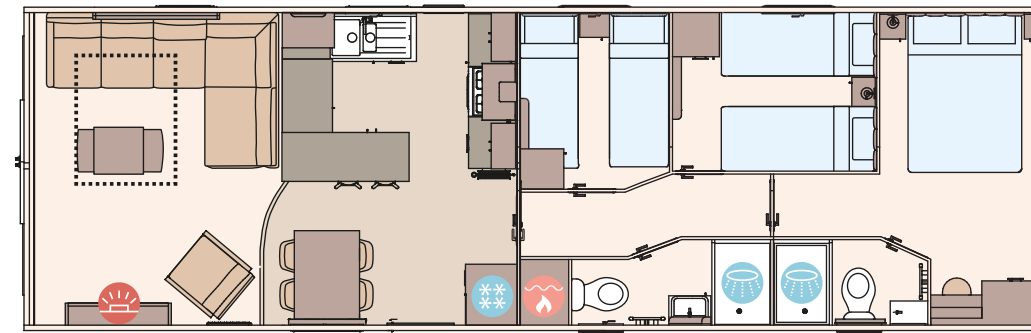
- ✓ Bathroom extractor fans
- ✓ Shaver socket
- ✓ Additional sockets next to TV point in lounge
- ✓ Hooks in all bathrooms
- ✓ Composite kitchen sink
- ✓ Full front sliding door
- ✓ Crib 5 mattresses to all bedrooms
- ✓ Contemporary radiator in lounge

### Add any of these

- ☐ Residential specification BS3632
- ☐ Deluxe Bluetooth sound system
- ☐ 'Exclusive' pocket sprung mattresses
- ☐ Space saver bed for twin room
- ☐ Integrated washing machine
- ☐ Integrated dishwasher
- ☐ Integrated microwave oven
- ☐ Fully galvanised chassis
- ☐ CanExel™ exterior cladding
- ☐ Graphite grey windows and doors with optional matching internal linings



The Ingleton 40ft x 13ft x 2 bedroom



The Ingleton 41ft x 13ft x 3 bedroom

### KEY:

- Fire
- Water heater
- Shower
- Fridge/Freezer
- Front pull out bed

OPTIONAL  
Residential  
specification  
BS3632  
See Page 86

OPTIONAL  
WINTER  
PACKS  
See Page 86





# The Langdale

Relaxation comes naturally here. Take off well stomped boots and enjoy a peaceful cuppa in the light of the dinette feature window. New nature inspired prints and textures encourage the outdoors in. Every element of ease has been considered for a seriously savourable switch-off.





*Feel well-rested while surrounded by nature*

Please note: Some items featured in this photography are scene-setting props or optional extras, not included in your purchase. Please speak to your park or dealership or refer to the 'all this included' section for this holiday home.





# The Langdale

The only decision you need to make here is two bedrooms or three. Savour the downtime and drink it all in.

For external CanExel™ Cladding option please visit [www.abiuk.co.uk](http://www.abiuk.co.uk)



For more information and to take a virtual tour, visit [www.abiuk.co.uk](http://www.abiuk.co.uk)

## All this included

- ✓ Matt finish Champagne aluminium cladding
- ✓ Pre-galvanised twin axle chassis
- ✓ Full front sliding door
- ✓ White 'Low E' PVCu Thermaglass double glazing
- ✓ Fully condensing boiler gas central heating
- ✓ Luxury wood burner style feature fire
- ✓ Carpet underlay throughout
- ✓ Free-standing dining table and chairs
- ✓ Satellite co-ax
- ✓ USB socket in lounge
- ✓ Scatter cushions in lounge
- ✓ Voiles throughout
- ✓ Soft-close hinges on doors and drawers in kitchen
- ✓ Integrated oven and separate 5 burner hob
- ✓ 40mm worktops
- ✓ Integrated fridge freezer
- ✓ Externally vented powered cooker hood
- ✓ Lift-up bed in master bedroom
- ✓ TV point in all bedrooms
- ✓ USB sockets in all bedrooms
- ✓ King size bed in master bedroom (2 bedroom model only)
- ✓ Composite kitchen sink

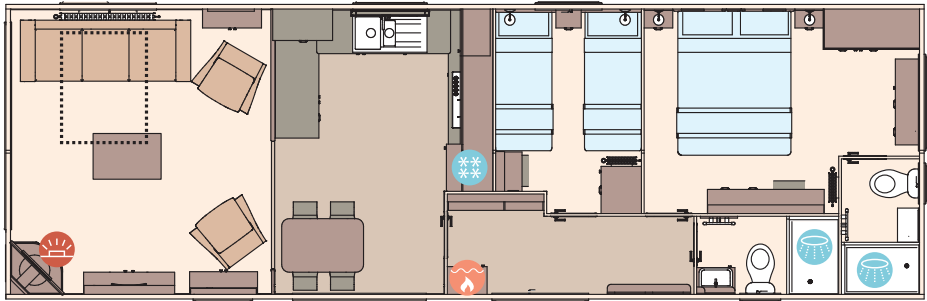
- ✓ Plain duvet covers and pillowcases
- ✓ Bed runners and scatter cushions on all beds
- ✓ En suite shower (2 bedroom model only)
- ✓ En suite toilet
- ✓ Bathroom extractor fans
- ✓ Shaver socket
- ✓ Additional sockets next to TV point in lounge
- ✓ Hooks in all bathrooms
- ✓ Entrance hall and cloakroom
- ✓ Stylish pictures throughout
- ✓ Full front sliding door
- ✓ Crib 5 mattresses to all bedrooms

## Add any of these

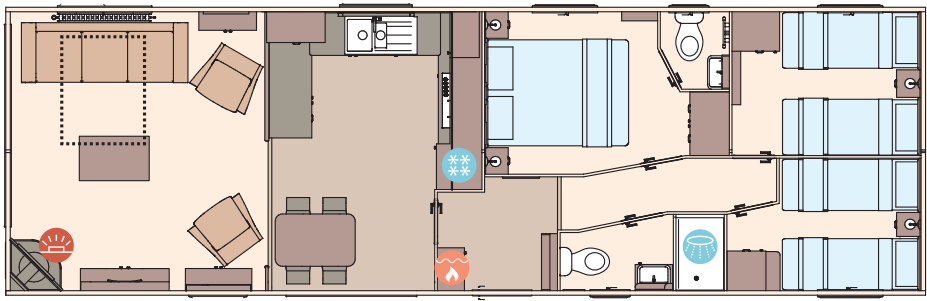
- ☐ Residential specification BS3632
- ☐ Deluxe Bluetooth sound system
- ☐ 'Exclusive' pocket sprung mattresses
- ☐ Space saver bed for twin room
- ☐ Integrated washing machine
- ☐ Integrated dishwasher
- ☐ Integrated microwave oven
- ☐ Fully galvanised chassis
- ☐ CanExel™ exterior cladding
- ☐ Vinyl flooring in lounge in lieu of carpet

## Highlights:

- Updated colour scheme for 2025
- Luxury wood burner style feature fireplace
- Free-standing domestic style seats
- Modern spacious kitchen
- Natural contemporary feature slatted wall panelling to lounge



The Langdale 40ft x 13ft x 2 bedroom



The Langdale 41ft x 13ft x 3 bedroom

## KEY:

- Fire
- Water heater
- Shower
- Fridge/Freezer
- Front pull out bed

OPTIONAL  
Residential  
specification  
BS3632  
See Page 86





Shows optional VELUX® rooflight, see page 71

# The Ambleside

Start every day the right way. Bask in the morning glow from the bathroom skylight and admire fresh floral prints that burst and bloom throughout. Hearty breakfasts were made to be served from this seriously sunny kitchen, steeped with all the character and charm of the countryside.





*Take a moment in the comfort of the window seat*

Please note: Some items featured in this photography are scene-setting props or optional extras, not included in your purchase. Please speak to your park or dealership or refer to the 'all this included' section for this holiday home.





# The Ambleside

If this is your picture of holiday perfection, there are four different models ready for you to choose from.

For external CanExel™ Cladding option please visit [www.abiuk.co.uk](http://www.abiuk.co.uk)



For more information and to take a virtual tour, visit [www.abiuk.co.uk](http://www.abiuk.co.uk)

## All this included

- ✓ Matt finish Chateaux grey aluminium cladding
- ✓ Pre-galvanised twin axle chassis
- ✓ Graphite grey 'Low E' PVCu Thermaglass double glazing
- ✓ Front French door
- ✓ Fully condensing boiler gas central heating
- ✓ Log burner style electric fire
- ✓ Carpet underlay throughout
- ✓ Free-standing dining table and chairs
- ✓ Upholstered footstool
- ✓ Satellite co-ax
- ✓ USB socket in lounge
- ✓ Scatter cushions in lounge
- ✓ Voiles throughout
- ✓ Soft-close drawers throughout
- ✓ Integrated oven and separate 5 burner hob
- ✓ 40mm worktops
- ✓ Integrated fridge freezer
- ✓ Externally vented powered cooker hood
- ✓ Lift-up bed in master bedroom
- ✓ TV point in all bedrooms
- ✓ USB sockets in all bedrooms (includes USB sockets on both sides of the main bed)
- ✓ King size bed in master bedroom (2 bedroom model only)
- ✓ Plain duvet covers and pillowcases
- ✓ Bed runners and scatter cushions on all beds
- ✓ Separate en suite toilet and shower
- ✓ Bathroom extractor fans
- ✓ Shaver socket

- ✓ Hooks in all bathrooms
- ✓ Entrance hall
- ✓ Composite kitchen sink
- ✓ Wicker storage baskets in kitchen
- ✓ Wall lighting in lounge
- ✓ Crib 5 mattresses to all bedrooms

## Add any of these

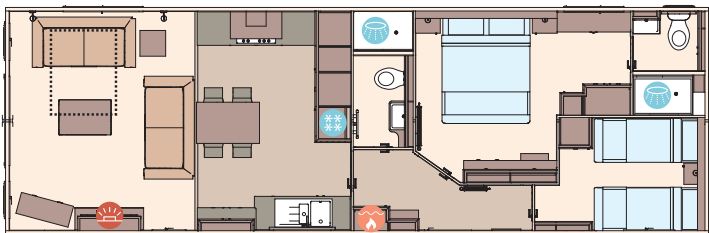
- ☐ Premier Pack
- ☐ Residential specification BS3632
- ☐ 'Exclusive' pocket sprung mattresses
- ☐ Integrated dishwasher
- ☐ Integrated washing machine
- ☐ Integrated microwave oven
- ☐ Fully galvanised chassis
- ☐ Deluxe Bluetooth sound system
- ☐ Second bedroom as double instead of twin, bed includes lift-up storage (Premier model)
- ☐ CanExel™ exterior cladding
- ☐ Space saver bed in twin room
- ☐ Additional window in lounge nearside corner
- ☐ Full front sliding door in lieu of front French door
- ☐ VELUX® rooflight window to kitchen

## The Ambleside Premier Pack

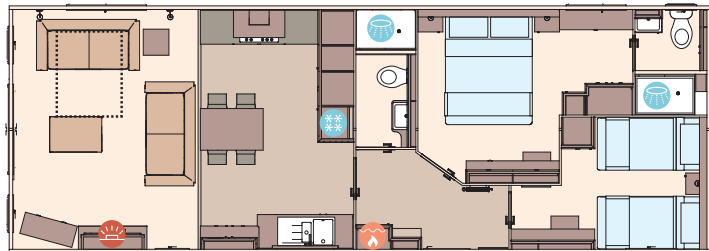
- ✓ Light grey hard PVCu cladding
- ✓ 14ft wide
- ✓ Larger sofa
- ✓ 3ft beds in twin room
- ✓ Dressing table with stool in twin room (2 bedroom model only)

## Highlights:

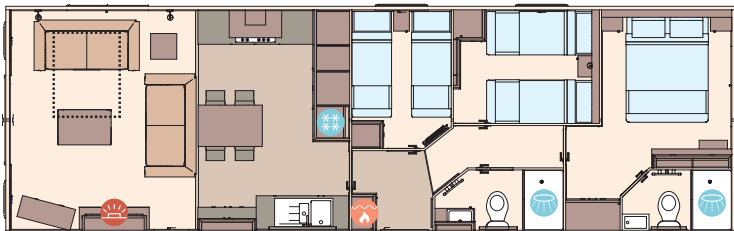
- Stunning kitchen with integrated appliances
- Home-from-home styling
- 14ft Premier Pack available providing more space and double bed option in twin room
- Large, comfortable free-standing sofas
- En suite shower
- Optional panoramic sliding doors



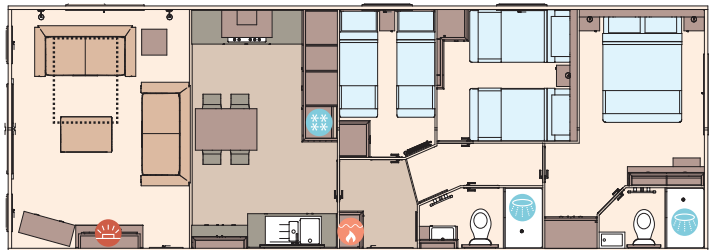
The Ambleside 40ft x 13ft x 2 bedroom



The Ambleside Premier 40ft x 14ft x 2 bedroom



The Ambleside 41ft x 13ft x 3 bedroom



The Ambleside Premier 41ft x 14ft x 3 bedroom

KEY: Fire Water heater Shower Fridge/Freezer Front pull out bed

OPTIONAL  
Residential  
specification  
BS3632  
See Page 86





# The Beaumont Lodge

Step into laid-back glamour. Wood panelled accent walls create a cool, relaxed vibe. Enjoy its chilled out charm with showstopping views, a seriously sink-in-able tub and beautifully lit dressing table. Say hello to holidaying with wow factor.





### *Glamorous by nature*

Please note: Some items featured in this photography are scene-setting props or optional extras, not included in your purchase. Please speak to your park or dealership or refer to the 'all this included' section for this holiday home.





# The Beaumont Lodge

Is this sensational holiday home the one for you? Then it's time to explore its layout and the delightful details you'll find inside.

For external CanExel™ Cladding option please visit [www.abiuk.co.uk](http://www.abiuk.co.uk)



For more information and to take a virtual tour, visit [www.abiuk.co.uk](http://www.abiuk.co.uk)

### All this included

- ✓ Fully galvanised heavy-duty chassis
- ✓ Chateaux grey PVCu cladding
- ✓ Front sliding patio doors
- ✓ White 'Low E' PVCu Thermaglass double glazing
- ✓ Carpet underlay throughout
- ✓ Fully condensing boiler gas central heating
- ✓ Stylish domestic sofas
- ✓ Upholstered footstool
- ✓ Free-standing dining table and 2 chairs around fixed dinette seating
- ✓ Breakfast style chairs
- ✓ Scatter cushions in lounge
- ✓ USB socket in lounge
- ✓ Satellite co-ax
- ✓ Additional sockets next to TV point in lounge
- ✓ 5 burner gas hob including wok burner
- ✓ Composite kitchen sink
- ✓ Integrated fridge freezer
- ✓ Integrated dishwasher
- ✓ Integrated microwave oven
- ✓ Externally vented powered cooker hood
- ✓ Soft-close hinges on doors and drawers throughout
- ✓ Lift-up bed in master bedroom
- ✓ King size bed in master bedroom
- ✓ Plain duvet covers and pillowcases
- ✓ Bed runners and scatter cushions on all beds

- ✓ USB sockets in all bedrooms (includes USB sockets to both sides of the main bed)
- ✓ TV point in all bedrooms
- ✓ Luxury en suite with domestic style bath
- ✓ Bathroom extractor fans
- ✓ Shaver socket
- ✓ Hooks in all bathrooms
- ✓ Wicker storage baskets in kitchen
- ✓ Stylish round and oval mirrors in all bedrooms, bathroom and en suite
- ✓ Roman fabric blinds to all windows (except front end of holiday home)
- ✓ Crib 5 mattresses to all bedrooms
- ✓ High quality internal door frames and doors

### Add any of these

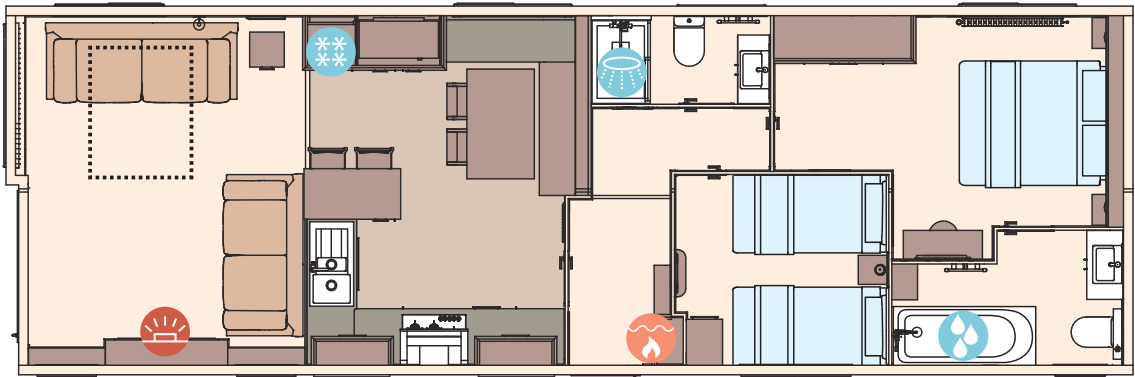
- ☐ Residential specification BS3632
- ☐ Deluxe Bluetooth sound system
- ☐ Deluxe NEFF appliances including microwave, oven and hob and extractor hood
- ☐ 'Exclusive' pocket sprung mattresses
- ☐ Space saver bed for twin room
- ☐ Integrated washing machine
- ☐ Timberwolf Ced-R-Vue CanExel™ exterior cladding with VinylPlus feature cladding
- ☐ L-shaped seating with 1 x armchair in lieu of free-standing sofas

## Highlights:

- Opulent feature window
- Optional deluxe NEFF kitchen appliances
- Natural contemporary feature slatted wall panelling
- Bath in en suite



Shows optional CanExel® and VinylPlus exterior, see page 77



The Beaumont Lodge 43ft x 14ft x 2 bedroom

KEY: Fire Water heater Shower Bath Fridge/Freezer Front pull out bed

OPTIONAL  
Residential  
specification  
BS3632  
See Page 86





# The Westwood Lodge

Entertain in grandeur. Let cinematic views from the new feature window draw you in, then sit back in splendour and absorb the sophisticated finish of chevron style feature walls and matt black details. Design that oozes style and contemporary chic. This is opulent vacationing.





*Let the good times flow*

Please note: Some items featured in this photography are scene-setting props or optional extras, not included in your purchase. Please speak to your park or dealership or refer to the 'all this included' section for this holiday home.







# The Westwood Lodge

Can you already picture yourself here?  
Read on to discover all the finer details  
this sophisticated showstopper provides  
to help you holiday in style.

For external CanExel™ Cladding option,  
please visit [www.abiuk.co.uk](http://www.abiuk.co.uk)



For more information  
and to take a virtual tour,  
visit [www.abiuk.co.uk](http://www.abiuk.co.uk)

### All this included

- ✓ Light grey hard PVCu cladding
- ✓ Fully galvanised heavy-duty chassis
- ✓ Full front sliding door
- ✓ Graphite grey 'Low E' PVCu Thermaglass double glazing
- ✓ Carpet underlay throughout
- ✓ Fully condensing boiler gas central heating
- ✓ Electric fire
- ✓ Free-standing domestic style furniture
- ✓ Scatter cushions in lounge
- ✓ Free-standing dining table and 6 chairs
- ✓ USB socket in lounge
- ✓ Satellite co-ax
- ✓ Integrated fridge freezer
- ✓ Integrated dishwasher
- ✓ Integrated microwave oven
- ✓ Externally vented powered cooker hood
- ✓ 5 burner gas hob including wok burner
- ✓ Composite kitchen sink
- ✓ Soft-close hinges on doors and drawers throughout
- ✓ Slate effect 25mm kitchen worktops
- ✓ King size bed in master bedroom
- ✓ Lift-up bed in master bedroom
- ✓ 3ft single beds
- ✓ Plain duvet covers and pillowcases
- ✓ Bed throws and scatter cushions on all beds
- ✓ USB sockets in all bedrooms (includes USB sockets on both sides of the main bed)
- ✓ TV point in all bedrooms
- ✓ Separate en suite shower and toilet
- ✓ Bathroom extractor fans

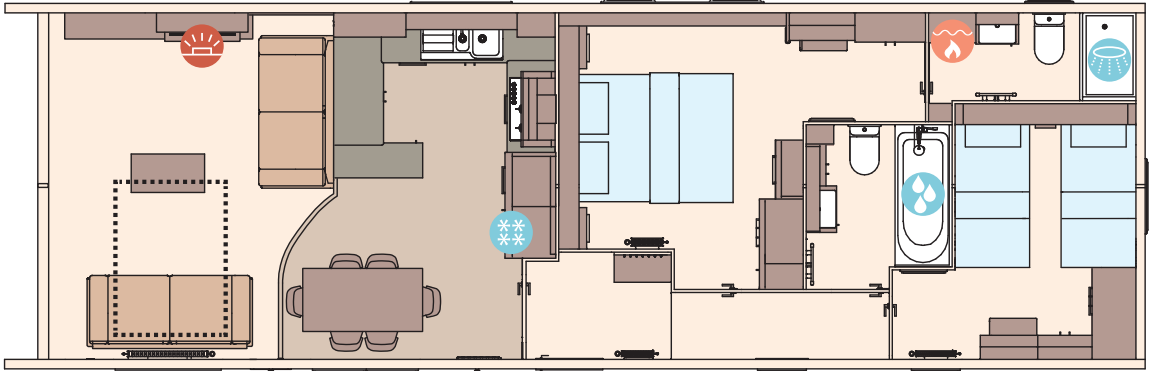
- ✓ Bathroom with domestic style bath
- ✓ Shaver socket
- ✓ Luxury soft-close toilets
- ✓ Hooks in all bathrooms and master bedroom
- ✓ Entrance hall and cloakroom
- ✓ Pictures in hallway and bathroom
- ✓ VELUX® rooflight window in kitchen
- ✓ Corner pull-out shelving unit in the kitchen
- ✓ Wine cooler in kitchen
- ✓ Stylish wall lights in lounge
- ✓ Feature fireplace with wooden beam and classic mirror
- ✓ Feature wood panelling walls in lounge and master bedroom
- ✓ Architectural external roof panels
- ✓ Contemporary radiator in lounge
- ✓ Crib 5 mattresses to all bedrooms
- ✓ High quality internal door frames and doors

### Add any of these

- ☐ Deluxe Bluetooth sound system
- ☐ 'Exclusive' pocket sprung mattresses
- ☐ Space saver bed for twin room
- ☐ Integrated washing machine
- ☐ CanExel™ exterior cladding (available in D5 Ridgewood or Ced-R-Vue styles)
- ☐ TV facility in lounge above fireplace in lieu of mirror
- ☐ Deluxe NEFF appliances including microwave, oven and hob and extractor hood

### Highlights:

- Sumptuous master bedroom with dressing area and en suite shower
- Spacious twin room with 3ft beds
- Luxury kitchen
- The ultimate in holiday homes
- Built to BS3632 Residential Specification
- Contemporary styling throughout
- Fully glazed front with sliding doors



The Westwood Lodge 44ft x 14ft x 2 bedroom

KEY: Fire Water heater Shower Bath Fridge/Freezer Front pull out bed



## MODEL SPECIFICATIONS AND OPTIONS.

<div><input checked="" type="checkbox"/> Standard</div> <div><input type="checkbox"/> Optional</div> <div><input type="checkbox"/> Not available</div>				THE COWORTH								THE KESWICK								THE WIMBLEDON		
				28' X 10' 2 BED	32' X 10' 2 BED	36' X 10' 3 BED	28' X 12' 2 BED	32' X 12' 2 BED	36' X 12' 2 BED	36' X 12' 3 BED	39' X 12' 3 BED	28' X 10' 2 BED	32' X 10' 2 BED	36' X 10' 3 BED	28' X 12' 2 BED	32' X 12' 2 BED	36' X 12' 2 BED	36' X 12' 3 BED	39' X 12' 3 BED	37' X 12' 2 BED	39' X 12' 2 BED	40' X 12' 3 BED
EXTERIOR	PAINTED CHASSIS			<input checked="" type="checkbox"/>	<input checked="" type="checkbox"/>	<input checked="" type="checkbox"/>	<input checked="" type="checkbox"/>	<input checked="" type="checkbox"/>	<input checked="" type="checkbox"/>	<input checked="" type="checkbox"/>	<input checked="" type="checkbox"/>	<input checked="" type="checkbox"/>	<input checked="" type="checkbox"/>	<input checked="" type="checkbox"/>	<input checked="" type="checkbox"/>	<input checked="" type="checkbox"/>	<input checked="" type="checkbox"/>	<input checked="" type="checkbox"/>	<input checked="" type="checkbox"/>	<input checked="" type="checkbox"/>	<input checked="" type="checkbox"/>	<input checked="" type="checkbox"/>
	PRE-GALVANISED CHASSIS			<input type="checkbox"/>	<input type="checkbox"/>	<input type="checkbox"/>	<input type="checkbox"/>	<input type="checkbox"/>	<input type="checkbox"/>	<input type="checkbox"/>	<input type="checkbox"/>	<input type="checkbox"/>	<input type="checkbox"/>	<input type="checkbox"/>	<input type="checkbox"/>	<input type="checkbox"/>	<input type="checkbox"/>	<input type="checkbox"/>	<input type="checkbox"/>	<input type="checkbox"/>	<input type="checkbox"/>	<input type="checkbox"/>
	FULLY GALVANISED CHASSIS			<input type="checkbox"/>	<input type="checkbox"/>	<input type="checkbox"/>	<input type="checkbox"/>	<input type="checkbox"/>	<input type="checkbox"/>	<input type="checkbox"/>	<input type="checkbox"/>	<input type="checkbox"/>	<input type="checkbox"/>	<input type="checkbox"/>	<input type="checkbox"/>	<input type="checkbox"/>	<input type="checkbox"/>	<input type="checkbox"/>	<input type="checkbox"/>	<input type="checkbox"/>	<input type="checkbox"/>	<input type="checkbox"/>
	FULLY GALVANISED HEAVY DUTY 'I' BEAM CHASSIS			<input type="checkbox"/>	<input type="checkbox"/>	<input type="checkbox"/>	<input type="checkbox"/>	<input type="checkbox"/>	<input type="checkbox"/>	<input type="checkbox"/>	<input type="checkbox"/>	<input type="checkbox"/>	<input type="checkbox"/>	<input type="checkbox"/>	<input type="checkbox"/>	<input type="checkbox"/>	<input type="checkbox"/>	<input type="checkbox"/>	<input type="checkbox"/>	<input type="checkbox"/>	<input type="checkbox"/>	<input type="checkbox"/>
	PVCu CLADDING			<input type="checkbox"/>	<input type="checkbox"/>	<input type="checkbox"/>	<input type="checkbox"/>	<input type="checkbox"/>	<input type="checkbox"/>	<input type="checkbox"/>	<input type="checkbox"/>	<input type="checkbox"/>	<input type="checkbox"/>	<input type="checkbox"/>	<input type="checkbox"/>	<input type="checkbox"/>	<input type="checkbox"/>	<input type="checkbox"/>	<input type="checkbox"/>	<input type="checkbox"/>	<input type="checkbox"/>	<input type="checkbox"/>
	CANEXEL™ CLADDING			<input type="checkbox"/>	<input type="checkbox"/>	<input type="checkbox"/>	<input type="checkbox"/>	<input type="checkbox"/>	<input type="checkbox"/>	<input type="checkbox"/>	<input type="checkbox"/>	<input type="checkbox"/>	<input type="checkbox"/>	<input type="checkbox"/>	<input type="checkbox"/>	<input type="checkbox"/>	<input type="checkbox"/>	<input type="checkbox"/>	<input type="checkbox"/>	<input type="checkbox"/>	<input type="checkbox"/>	<input type="checkbox"/>
	UPGRADED EXTERNAL WALLS			<input type="checkbox"/>	<input type="checkbox"/>	<input type="checkbox"/>	<input type="checkbox"/>	<input type="checkbox"/>	<input type="checkbox"/>	<input type="checkbox"/>	<input type="checkbox"/>	<input checked="" type="checkbox"/>	<input checked="" type="checkbox"/>	<input checked="" type="checkbox"/>	<input checked="" type="checkbox"/>	<input checked="" type="checkbox"/>	<input checked="" type="checkbox"/>	<input checked="" type="checkbox"/>	<input checked="" type="checkbox"/>	<input checked="" type="checkbox"/>	<input checked="" type="checkbox"/>	<input checked="" type="checkbox"/>
	FRONT FRENCH DOOR			<input type="checkbox"/>	<input type="checkbox"/>	<input type="checkbox"/>	<input type="checkbox"/>	<input type="checkbox"/>	<input type="checkbox"/>	<input type="checkbox"/>	<input type="checkbox"/>	<input type="checkbox"/>	<input type="checkbox"/>	<input type="checkbox"/>	<input type="checkbox"/>	<input type="checkbox"/>	<input type="checkbox"/>	<input type="checkbox"/>	<input type="checkbox"/>	<input type="checkbox"/>	<input type="checkbox"/>	<input type="checkbox"/>
	FRONT SLIDING DOOR			<input type="checkbox"/>	<input type="checkbox"/>	<input type="checkbox"/>	<input type="checkbox"/>	<input type="checkbox"/>	<input type="checkbox"/>	<input type="checkbox"/>	<input type="checkbox"/>	<input type="checkbox"/>	<input type="checkbox"/>	<input type="checkbox"/>	<input type="checkbox"/>	<input type="checkbox"/>	<input type="checkbox"/>	<input type="checkbox"/>	<input type="checkbox"/>	<input type="checkbox"/>	<input type="checkbox"/>	<input type="checkbox"/>
	FULL FRONT SLIDING DOOR			<input type="checkbox"/>	<input type="checkbox"/>	<input type="checkbox"/>	<input type="checkbox"/>	<input type="checkbox"/>	<input type="checkbox"/>	<input type="checkbox"/>	<input type="checkbox"/>	<input type="checkbox"/>	<input type="checkbox"/>	<input type="checkbox"/>	<input type="checkbox"/>	<input type="checkbox"/>	<input type="checkbox"/>	<input type="checkbox"/>	<input type="checkbox"/>	<input type="checkbox"/>	<input type="checkbox"/>	<input type="checkbox"/>
	VELUX® ROOFLIGHT IN KITCHEN			<input type="checkbox"/>	<input type="checkbox"/>	<input type="checkbox"/>	<input type="checkbox"/>	<input type="checkbox"/>	<input type="checkbox"/>	<input type="checkbox"/>	<input type="checkbox"/>	<input type="checkbox"/>	<input type="checkbox"/>	<input type="checkbox"/>	<input type="checkbox"/>	<input type="checkbox"/>	<input type="checkbox"/>	<input type="checkbox"/>	<input type="checkbox"/>	<input type="checkbox"/>	<input type="checkbox"/>	<input type="checkbox"/>
'LOW E' PVCu THERMAGLASS DOUBLE GLAZING			<input type="checkbox"/>	<input type="checkbox"/>	<input type="checkbox"/>	<input type="checkbox"/>	<input type="checkbox"/>	<input type="checkbox"/>	<input type="checkbox"/>	<input type="checkbox"/>	<input type="checkbox"/>	<input type="checkbox"/>	<input type="checkbox"/>	<input type="checkbox"/>	<input type="checkbox"/>	<input type="checkbox"/>	<input type="checkbox"/>	<input type="checkbox"/>	<input type="checkbox"/>	<input type="checkbox"/>	<input type="checkbox"/>	
INTERIOR	WINTER ELECTRIC PACK			<input type="checkbox"/>	<input type="checkbox"/>	<input type="checkbox"/>	<input type="checkbox"/>	<input type="checkbox"/>	<input type="checkbox"/>	<input type="checkbox"/>	<input type="checkbox"/>	<input type="checkbox"/>	<input type="checkbox"/>	<input type="checkbox"/>	<input type="checkbox"/>	<input type="checkbox"/>	<input type="checkbox"/>	<input type="checkbox"/>	<input type="checkbox"/>	<input type="checkbox"/>	<input type="checkbox"/>	<input type="checkbox"/>
	WINTER PREMIUM PACK			<input type="checkbox"/>	<input type="checkbox"/>	<input type="checkbox"/>	<input type="checkbox"/>	<input type="checkbox"/>	<input type="checkbox"/>	<input type="checkbox"/>	<input type="checkbox"/>	<input type="checkbox"/>	<input type="checkbox"/>	<input type="checkbox"/>	<input type="checkbox"/>	<input type="checkbox"/>	<input type="checkbox"/>	<input type="checkbox"/>	<input type="checkbox"/>	<input type="checkbox"/>	<input type="checkbox"/>	
	VOILES THROUGHOUT			<input type="checkbox"/>	<input type="checkbox"/>	<input type="checkbox"/>	<input type="checkbox"/>	<input type="checkbox"/>	<input type="checkbox"/>	<input type="checkbox"/>	<input type="checkbox"/>	<input type="checkbox"/>	<input type="checkbox"/>	<input type="checkbox"/>	<input type="checkbox"/>	<input type="checkbox"/>	<input type="checkbox"/>	<input type="checkbox"/>	<input type="checkbox"/>	<input type="checkbox"/>	<input type="checkbox"/>	<input type="checkbox"/>
LOUNGE/DINING AREA	ELECTRIC FIRE			<input type="checkbox"/>	<input type="checkbox"/>	<input type="checkbox"/>	<input type="checkbox"/>	<input type="checkbox"/>	<input type="checkbox"/>	<input type="checkbox"/>	<input type="checkbox"/>	<input checked="" type="checkbox"/>	<input checked="" type="checkbox"/>	<input checked="" type="checkbox"/>	<input checked="" type="checkbox"/>	<input checked="" type="checkbox"/>	<input checked="" type="checkbox"/>	<input checked="" type="checkbox"/>	<input checked="" type="checkbox"/>	<input checked="" type="checkbox"/>	<input checked="" type="checkbox"/>	<input checked="" type="checkbox"/>
	SCATTER CUSHIONS			<input checked="" type="checkbox"/>	<input checked="" type="checkbox"/>	<input checked="" type="checkbox"/>	<input checked="" type="checkbox"/>	<input checked="" type="checkbox"/>	<input checked="" type="checkbox"/>	<input checked="" type="checkbox"/>	<input checked="" type="checkbox"/>	<input checked="" type="checkbox"/>	<input checked="" type="checkbox"/>	<input checked="" type="checkbox"/>	<input checked="" type="checkbox"/>	<input checked="" type="checkbox"/>	<input checked="" type="checkbox"/>	<input checked="" type="checkbox"/>	<input checked="" type="checkbox"/>	<input type="checkbox"/>	<input type="checkbox"/>	<input type="checkbox"/>
	DELUXE BLUETOOTH SOUND SYSTEM			<input type="checkbox"/>	<input type="checkbox"/>	<input type="checkbox"/>	<input type="checkbox"/>	<input type="checkbox"/>	<input type="checkbox"/>	<input type="checkbox"/>	<input type="checkbox"/>	<input type="checkbox"/>	<input type="checkbox"/>	<input type="checkbox"/>	<input type="checkbox"/>	<input type="checkbox"/>	<input type="checkbox"/>	<input type="checkbox"/>	<input type="checkbox"/>	<input type="checkbox"/>	<input type="checkbox"/>	<input type="checkbox"/>
	USB SOCKET IN LOUNGE			<input type="checkbox"/>	<input type="checkbox"/>	<input type="checkbox"/>	<input type="checkbox"/>	<input type="checkbox"/>	<input type="checkbox"/>	<input type="checkbox"/>	<input type="checkbox"/>	<input checked="" type="checkbox"/>	<input checked="" type="checkbox"/>	<input checked="" type="checkbox"/>	<input checked="" type="checkbox"/>	<input checked="" type="checkbox"/>	<input checked="" type="checkbox"/>	<input checked="" type="checkbox"/>	<input checked="" type="checkbox"/>	<input checked="" type="checkbox"/>	<input checked="" type="checkbox"/>	<input checked="" type="checkbox"/>
	SEPARATE LOUNGE / KITCHEN			<input type="checkbox"/>	<input type="checkbox"/>	<input type="checkbox"/>	<input type="checkbox"/>	<input type="checkbox"/>	<input type="checkbox"/>	<input type="checkbox"/>	<input type="checkbox"/>	<input type="checkbox"/>	<input type="checkbox"/>	<input type="checkbox"/>	<input type="checkbox"/>	<input type="checkbox"/>	<input type="checkbox"/>	<input type="checkbox"/>	<input type="checkbox"/>	<input type="checkbox"/>	<input type="checkbox"/>	<input type="checkbox"/>
	FREE-STANDING DINING TABLE & CHAIRS			<input type="checkbox"/>	<input type="checkbox"/>	<input type="checkbox"/>	<input type="checkbox"/>	<input type="checkbox"/>	<input type="checkbox"/>	<input type="checkbox"/>	<input type="checkbox"/>	<input type="checkbox"/>	<input type="checkbox"/>	<input type="checkbox"/>	<input type="checkbox"/>	<input type="checkbox"/>	<input type="checkbox"/>	<input type="checkbox"/>	<input type="checkbox"/>	<input type="checkbox"/>	<input type="checkbox"/>	<input type="checkbox"/>
	L-SHAPED DINETTE SEATING			<input type="checkbox"/>	<input type="checkbox"/>	<input type="checkbox"/>	<input type="checkbox"/>	<input type="checkbox"/>	<input type="checkbox"/>	<input type="checkbox"/>	<input type="checkbox"/>	<input type="checkbox"/>	<input type="checkbox"/>	<input type="checkbox"/>	<input type="checkbox"/>	<input type="checkbox"/>	<input type="checkbox"/>	<input type="checkbox"/>	<input type="checkbox"/>	<input checked="" type="checkbox"/>	<input checked="" type="checkbox"/>	<input checked="" type="checkbox"/>
KITCHEN	POWERED COOKER HOOD			<input type="checkbox"/>	<input type="checkbox"/>	<input type="checkbox"/>	<input type="checkbox"/>	<input type="checkbox"/>	<input type="checkbox"/>	<input type="checkbox"/>	<input type="checkbox"/>	<input checked="" type="checkbox"/>	<input checked="" type="checkbox"/>	<input checked="" type="checkbox"/>	<input checked="" type="checkbox"/>	<input checked="" type="checkbox"/>	<input checked="" type="checkbox"/>	<input checked="" type="checkbox"/>	<input checked="" type="checkbox"/>	<input checked="" type="checkbox"/>	<input checked="" type="checkbox"/>	<input checked="" type="checkbox"/>
	FREE-STANDING FRIDGE OR FRIDGE FREEZER			<input type="checkbox"/>	<input type="checkbox"/>	<input type="checkbox"/>	<input type="checkbox"/>	<input type="checkbox"/>	<input type="checkbox"/>	<input type="checkbox"/>	<input type="checkbox"/>	<input type="checkbox"/>	<input type="checkbox"/>	<input type="checkbox"/>	<input type="checkbox"/>	<input type="checkbox"/>	<input type="checkbox"/>	<input type="checkbox"/>	<input type="checkbox"/>	<input type="checkbox"/>	<input type="checkbox"/>	<input type="checkbox"/>
	INTEGRATED FRIDGE FREEZER			<input type="checkbox"/>	<input type="checkbox"/>	<input type="checkbox"/>	<input type="checkbox"/>	<input type="checkbox"/>	<input type="checkbox"/>	<input type="checkbox"/>	<input type="checkbox"/>	<input type="checkbox"/>	<input type="checkbox"/>									

It is recommended that units with NEFF appliances are to be on a 32A supply

THE ST DAVID			THE BEVERLEY			THE DERWENT	THE WINDERMERE				THE INGLETON		THE LANGDALE		THE AMBLESIDE		THE BEAUMONT LODGE	THE WESTWOOD LODGE
37' X 12' 2 BED	38' X 12' 2 BED	39' X 12' 2 BED	36' X 12' 2 BED	39' X 12' 2 BED	40' X 12' 3 BED	38' X 12' 2 BED WCF	40' X 12' 2 BED	40' X 12' 3 BED	40' X 13' 2 BED	40' X 13' 3 BED	40' X 13' 2 BED	41' X 13' 3 BED	40' X 13' 2 BED	41' X 13' 3 BED	40' X 13' 2 BED	41' X 13' 3 BED	43' X 14' 2 BED	44' X 14' 2 BED
✓	✓	✓	✓	✓	✓	✓	✓	✓	✓	✓	X	X	X	X	X	X	X	X
X	X	X	X	X	X	X	X	X	X	X	✓	✓	✓	✓	✓	✓	X	X
O	O	O	O	O	O	O	O	O	O	O	O	O	O	O	O	O	X	X
X	X	X	X	X	X	X	X	X	X	X	X	X	X	X	X	X	✓	✓
X	X	X	X	X	X	X	X	X	X	X	X	X	X	X	O	O	✓	✓
X	X	X	X	X	X	X	X	X	X	X	O	O	O	O	O	O	O	O
✓	✓	✓	✓	✓	✓	✓	✓	✓	✓	✓	✓	✓	✓	✓	✓	✓	✓	✓
O	O	O	X	X	X	O	O	O	O	O	X	X	X	X	✓	✓	X	X
X	X	X	X	X	X	X	X	X	X	X	X	X	X	X	X	X	✓	X
O	O	O	O	O	O	X	O	O	O	O	✓	✓	✓	✓	O	O	X	✓
X	X	X	X	X	X	X	X	X	X	X	X	X	X	X	O	O	X	✓
O	O	O	O	O	O	O	O	O	O	O	✓	✓	✓	✓	✓	✓	✓	✓
O	O	O	O	O	O	O	O	O	O	O	X	X	X	X	X	X	X	X
O	O	O	O	O	O	O	O	O	O	O	✓	✓	✓	✓	✓	✓	✓	✓
✓	✓	✓	✓	✓	✓	✓	✓	✓	✓	✓	✓	✓	✓	✓	✓	✓	✓	✓
O	O	O	O	O	O	✓	✓	✓	✓	✓	✓	✓	✓	✓	✓	✓	✓	✓
O	O	O	O	O	O	X	O	O	O	O	O	O	O	O	O	O	O	O
✓	✓	✓	✓	✓	✓	✓	✓	✓	✓	✓	✓	✓	✓	✓	✓	✓	✓	✓
X	X	X	X	X	X	✓	X	X	X	X	X	X	X	X	X	X	X	X
✓	✓	✓	✓	✓	✓	✓	✓	✓	✓	✓	✓	✓	✓	✓	✓	✓	✓	✓
X	✓	X	X	✓	X	X	✓	X	✓	X	✓	✓	✓	X	✓	✓	✓	✓
✓	✓	✓	✓	✓	✓	✓	✓	✓	✓	✓	✓	✓	✓	✓	✓	✓	✓	✓
✓	✓	✓	✓	✓	✓	X	✓	✓	✓	✓	✓	✓	✓	✓	✓	✓	✓	✓
✓	✓	X	✓	✓	X	X	✓	X	✓	✓	✓	X	✓	X	✓	X	✓	✓
O	O	O	O	O	O	O	✓	✓	✓	✓	✓	✓	✓	✓	✓	✓	✓	✓
O	O	O	O	O	O	O	O	O	O	O	O	O	O	O	O	O	O	O
O	O	O	O	O	O	X	O	O	O	O	O	O	O	O	O	O	O	O
✓	✓	✓	✓	✓	✓	X	✓	✓	✓	✓	✓	✓	✓	✓	✓	✓	✓	✓
✓	✓	✓	✓	✓	✓	✓	✓	✓	✓	✓	✓	✓	✓	✓	✓	✓	✓	✓
✓	✓	✓	✓	✓	✓	✓	✓	✓	✓	✓	✓	✓	✓	✓	✓	✓	✓	✓
X	X	X	X	X	X	X	X	X	O	O	O	O	O	O	O	O	O	✓

**Standard across the whole ABI Collection.**

For your comfort and safety, all ABI holiday homes also include a list of standard items, fittings and safety features.

- ✓ 100mm insulation in roof

- ✓ Upgraded external walls with 50mm insulation (except The Coworth)

- ✓ Domestic gutters and downpipes

- ✓ Domestic style internal doors

- ✓ Domestic mattresses, 3 times more filling, more durable covering and now with Crib 5 protection

- ✓ Domestic twin cavity oven with electric ignition

- ✓ Electric fire (except The Coworth)

- ✓ Thermostatic shower mixer valve

- ✓ Underlay in carpeted areas (except The Coworth bedrooms)

- ✓ Low energy bulbs throughout and LED bulbs in all spotlights

- ✓ Lined curtains across all holiday homes (excluding The Coworth front end but available as part of Deluxe pack)

- ✓ Pull out bed in lounge

- ✓ Steel roof

detector

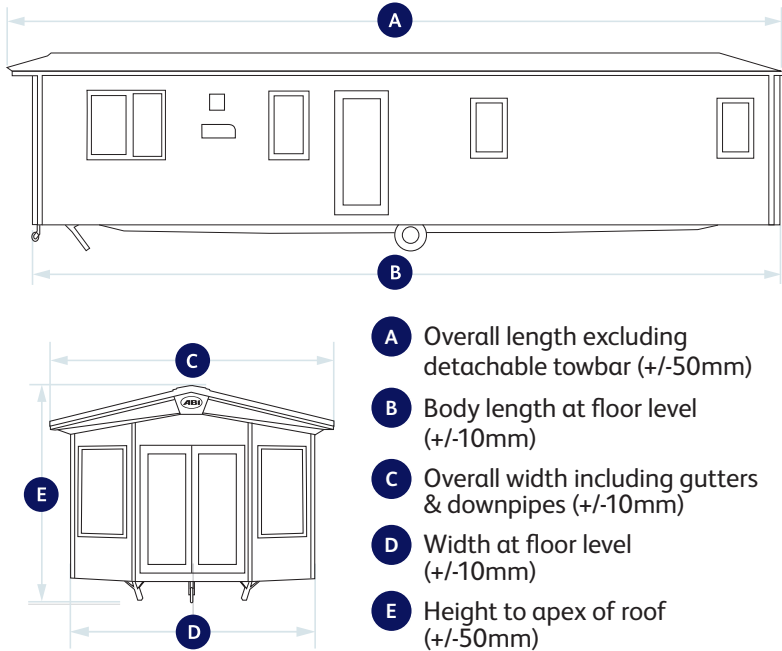
detector x2

---



MODEL SIZE	A	B	C	D	E
THE COWORTH 28' X 10' 2 BED	9.000	8.700	3.340	3.070	3.448
THE COWORTH 32' X 10' 2 BED	10.220	9.920	3.340	3.070	3.448
THE COWORTH 36' X 10' 3 BED	11.440	11.140	3.340	3.070	3.448
THE COWORTH 28' X 12' 2 BED	9.000	8.700	3.950	3.680	3.457
THE COWORTH 32' X 12' 2 BED	10.220	9.920	3.950	3.680	3.457
THE COWORTH 36' X 12' 2 BED	11.440	11.140	3.950	3.680	3.457
THE COWORTH 36' X 12' 3 BED	11.440	11.140	3.950	3.680	3.457
THE COWORTH 39' X 12' 3 BED	12.360	12.060	3.950	3.680	3.457
THE KESWICK 28' X 10' 2 BED	9.160	8.760	3.400	3.130	3.448
THE KESWICK 32' X 10' 2 BED	10.390	9.980	3.400	3.130	3.448
THE KESWICK 36' X 10' 3 BED	11.610	11.200	3.400	3.130	3.448
THE KESWICK 28' X 12' 2 BED	9.170	8.760	4.010	3.740	3.457
THE KESWICK 32' X 12' 2 BED	10.390	9.980	4.010	3.740	3.457
THE KESWICK 36' X 12' 2 BED	11.610	11.200	4.010	3.740	3.457
THE KESWICK 36' X 12' 3 BED	11.610	11.200	4.010	3.740	3.457
THE KESWICK 39' X 12' 3 BED	12.520	12.120	4.010	3.740	3.457
THE WIMBLEDON 37' X 12' 2 BED	11.530	11.280	4.010	3.680	3.457
THE WIMBLEDON 39' X 12' 2 BED	12.133	11.887	4.010	3.680	3.457
THE WIMBLEDON 40' X 12' 3 BED	12.592	12.344	4.010	3.680	3.457
THE ST DAVID 37' X 12' 2 BED	11.620	11.300	3.950	3.680	3.457
THE ST DAVID 38' X 12' 2 BED	11.930	11.600	3.950	3.680	3.457
THE ST DAVID 39' X 12' 3 BED	12.230	11.910	3.950	3.680	3.457
THE BEVERLEY 36' X 12' 2 BED	11.284	10.972	3.950	3.680	3.457
THE BEVERLEY 39' X 12' 2 BED	12.199	11.887	3.950	3.680	3.457
THE BEVERLEY 40' X 12' 3 BED	12.565	12.344	3.950	3.680	3.457
THE DERWENT WCF 38' X 12' 2 BED	11.990	11.656	4.010	3.740	3.457
THE WINDERMERE 40' X 12' 2 BED	12.630	12.300	3.950	3.680	3.457
THE WINDERMERE 40' X 12' 3 BED	12.630	12.300	3.950	3.680	3.457
THE WINDERMERE 40' X 13' 2 BED	12.630	12.300	4.250	3.980	3.590
THE WINDERMERE 40' X 13' 3 BED	12.630	12.300	4.250	3.980	3.590
THE INGLETON 40' X 13' 2 BED	12.592	12.344	4.250	3.980	3.590
THE INGLETON 41' X 13' 3 BED	12.897	12.649	4.250	3.980	3.590
THE LANGDALE 40' X 13' 2 BED	12.700	12.360	4.250	3.980	3.590
THE LANGDALE 41' X 13' 3 BED	13.000	12.670	4.250	3.980	3.590
THE AMBLESIDE 40' X 13' 2 BED	12.581	12.301	4.250	4.310	3.590
THE AMBLESIDE 41' X 13' 3 BED	12.863	12.570	4.250	4.310	3.590
THE AMBLESIDE PREMIER 40' X 14' 2 BED	12.581	12.301	4.580	4.310	3.624
THE AMBLESIDE PREMIER 41' X 14' 3 BED	12.863	12.570	4.580	4.310	3.624
THE BEAUMONT LODGE 43' X 14' 2 BED	13.630	13.300	4.580	4.310	3.721
THE WESTWOOD LODGE 44' X 14' 2 BED	13.740	13.610	4.680	4.410	3.990

## KEY TO EXTERNAL DIMENSIONS.



OPTIONAL  
WINTER  
PACKS  
See Page 86

## OPTIONAL WINTER PACKS

Winter packs keep your holiday home cosy during colder spells. To ensure your holiday home stays cosy and warm in the winter months, we offer the choice of two winter packs.

### Winter Premium:

- ‘Low E’ PVCu Thermaglass double glazing
- Domestic central heating
- Exterior light
- Extra insulation

### Winter Electric:

- ‘Low E’ PVCu Thermaglass double glazing
- 300W heaters in all bedrooms
- S-shaped towel rail in bathroom
- Exterior light
- Extra insulation



OPTIONAL  
Residential  
specification  
BS3632  
See Page 86

## OPTIONAL RESIDENTIAL SPECIFICATION BS3632

For 2025, certain models are available to be built to BS3632 residential specification. Where a BS3632 build is chosen, the following is included within the option as standard:

- Fully galvanised heavy-duty chassis
- Residential levels of ventilation
- 'Low E' PVCu Thermaglass double glazing fitted to all doors and windows
- Fully condensing boiler gas central heating
- Residential standard levels of insulation fitted to walls, floors and roof to meet required ‘u’ values
- Sound insulation to the exterior to meet required sound reduction values

BED SIZE	Master Bed	Twin Bed 1	Twin Bed 2	Twin Bed 3	Twin Bed 4
THE COWORTH 28' X 10' 2 BED	1905 X 1370	1905 X 610	1905 X 610	N/A	N/A
THE COWORTH 32' X 10' 2 BED	1905 X 1370	1905 X 610	1905 X 610	N/A	N/A
THE COWORTH 36' X 10' 3 BED	1905 X 1370	1905 X 610	1905 X 610	1905 X 610	1905 X 610
THE COWORTH 28' X 12' 2 BED	1905 X 1525	1905 X 760	1905 X 760	N/A	N/A
THE COWORTH 32' X 12' 2 BED	1905 X 1370	1905 X 760	1905 X 760	N/A	N/A
THE COWORTH 36' X 12' 2 BED	1905 X 1525	1905 X 760	1905 X 760	N/A	N/A
THE COWORTH 36' X 12' 3 BED	1905 X 1525	1905 X 686	1905 X 686	1905 X 610	1830 X 610
THE COWORTH 39' X 12' 3 BED	1905 X 1525	1905 X 686	1905 X 686	1905 X 686	1905 X 686
THE KESWICK 28' X 10' 2 BED	1905 X 1370	1830 X 610	1830 X 610	N/A	N/A
THE KESWICK 32' X 10' 2 BED	1905 X 1525	1830 X 686	1830 X 686	N/A	N/A
THE KESWICK 36' X 10' 3 BED	1830 X 1525	1905 X 610	1905 X 610	1905 X 610	1905 X 610
THE KESWICK 28' X 12' 2 BED	1905 X 1370	1830 X 686	1830 X 686	N/A	N/A
THE KESWICK 32' X 12' 2 BED	1905 X 1525	1905 X 686	1905 X 686	N/A	N/A
THE KESWICK 36' X 12' 2 BED	1905 X 1525	1905 X 686	1905 X 686	N/A	N/A
THE KESWICK 36' X 12' 3 BED	1905 X 1370	1905 X 686	1905 X 686	1905 X 610	1905 X 610
THE KESWICK 39' X 12' 3 BED	1905 X 1370	1905 X 686	1905 X 686	1905 X 610	1830 X 610
THE WIMBLEDON 37' X 12' 2 BED	1905 X 1525	1905 X 686	1905 X 686	N/A	N/A
THE WIMBLEDON 39' X 12' 2 BED	1905 X 1525	1905 X 686	1905 X 686	N/A	N/A
THE WIMBLEDON 40' X 12' 3 BED	1905 X 1370	1905 X 686	1905 X 686	1905 X 686	1830 X 686
THE ST DAVID 37' X 12' 2 BED	1905 X 1525	1905 X 686	1905 X 686	N/A	N/A
THE ST DAVID 38' X 12' 2 BED	1905 X 1525	1905 X 686	1905 X 686	N/A	N/A
THE ST DAVID 39' X 12' 3 BED	1905 X 1370	1905 X 686	1905 X 686	1905 X 610	1830 X 610
THE BEVERLEY 36' X 12' 2 BED	1905 X 1525	1905 X 686	1905 X 686	N/A	N/A
THE BEVERLEY 39' X 12' 2 BED	1905 X 1525	1905 X 686	1905 X 686	N/A	N/A
THE BEVERLEY 40' X 12' 3 BED	1905 X 1370	1905 X 686	1905 X 686	1830 X 686	1830 X 686
THE DERWENT WCF 38' X 12' 2 BED	1905 X 915 (x2)	1905 X 915	1905 X 915	N/A	N/A
THE WINDERMERE 40' X 12' 2 BED	1905 X 1525	1905 X 686	1905 X 686	N/A	N/A
THE WINDERMERE 40' X 12' 3 BED	1905 X 1370	1905 X 686	1905 X 686	1905 X 686	1830 X 686
THE WINDERMERE 40' X 13' 2 BED	1905 X 1525	1905 X 760	1905 X 760	N/A	N/A
THE WINDERMERE 40' X 13' 3 BED	1905 X 1525	1905 X 760	1905 X 760	1905 X 686	1830 X 686
THE INGLETON 40' X 13' 2 BED	1905 X 1525	1905 X 760	1905 X 760	N/A	N/A
THE INGLETON 41' X 13' 3 BED	1905 X 1370	1905 X 760	1905 X 760	1905 X 686	1905 X 686
THE LANGDALE 40' X 13' 2 BED	1905 X 1525	1905 X 760	1905 X 760	N/A	N/A
THE LANGDALE 41' X 13' 3 BED	1905 X 1370	1905 X 760	1905 X 760	1905 X 686	1905 X 686
THE AMBLESIDE 40' X 13' 2 BED	1905 X 1525	1905 X 760	1905 X 760	N/A	N/A
THE AMBLESIDE 41' X 13' 3 BED	1905 X 1370	1905 X 760	1905 X 760	1905 X 686	1905 X 686
THE AMBLESIDE PREMIER 40' X 14' 2 BED	1905 X 1525	1905 X 915	1905 X 915	N/A	N/A
THE AMBLESIDE PREMIER 41' X 14' 3 BED	1905 X 1370	1905 X 915	1905 X 915	1905 X 686	1905 X 686
THE BEAUMONT LODGE 43' X 14' 2 BED	1905 X 1525	1905 X 915	1905 X 915	N/A	N/A
THE WESTWOOD LODGE 44' X 14' 2 BED	1905 X 1525	1905 X 915	1905 X 915	N/A	N/A

The content of the brochure is as accurate as possible from information available at the time of going to print. ABI (UK) Ltd. reserves the right to alter specifications, prices and model ranges as materials and conditions are subject to availability and change, and therefore, ABI can accept no responsibility for discrepancies between this information and subsequent models. Illustrations do not reflect any individual holiday homes. All ABI holiday homes are built to comply with the relevant codes of practice required by the National Caravan Council Certification Scheme (EN1647) and therefore are designed for holiday use and not full time residential occupancy. Holiday homes built to BS3632 standard are for residential use. Kitchens may show optional appliances. ABI (UK) Ltd. advise you to contact your nearest dealership to check features, options, specifications and availability prior to ordering. \*Terms, conditions and exclusions apply. Please refer to the ABI Warranty booklet supplied with your ABI holiday home.

# Peace of mind

The level of care, craftsmanship and attention to detail that goes into each holiday home we build is something we pride ourselves on.

That’s why we insist on providing warranties that offer unrivalled protection because, in the unlikely event that something does go wrong, both our reputation for quality and our commitment to you are our priority.

It’s this combination of uncompromising quality, stringent checks and customer-focused care that has seen us become the UK’s best-loved holiday home manufacturer, giving you complete peace of mind from start to finish.

From the moment you take ownership of your ABI, everything inside is covered by a 12-month parts and labour warranty as standard. But it doesn’t end there...



## 3 YEAR WARRANTY\*

After the first year, you’ll enjoy a further 24 months’ cover on:

- Furniture manufactured and fitted by us
- Shower cubicle, topper and door
- Taps, sanitaryware and baths
- Radiators, internal doors and door handles
- Gutters, downpipes and cladding
- Sockets and switches
- Kitchen sink
- Dining table and chairs



## 5 YEAR WARRANTY\*

After the first year, you’ll enjoy an extra 48 months’ structural warranty on:

- Chassis, roof, walls, ceiling, floors and external windows and doors



## 10 YEAR WARRANTY\*

In addition to all this, fully galvanised heavy-duty chassis systems are covered by a full 10-year warranty from the date of purchase



# THAT FINISHING TOUCH

... beautiful, practical, low maintenance decking from AB Sundecks

- Bespoke Designs
- Exclusive Deck Boards
- Storage Hatches
- Exclusive Handrail options
- Lighting Options
- Easy Access Steps
- Built in Hot Tubs
- Access Ramps
- Locking Gates
- Robust Steel Sub Frame
- Glass Balustrading
- Ten Year Guarantee



Make the most of your outdoor space with AB Sundecks. Choose a deck that means you won't have to spend time on tedious, expensive maintenance.

A beautiful deck really enhances your holiday home. It provides a safe playground for children, a secure place for pets or simply somewhere to sit and relax.

Our decks are built on steel sub frames using high quality galvanised steel and reinforced with PVC joints and our deckboards are completely wood-free meaning there is no rotting or splitting, inside or out. This eradicates the need for the endless maintenance and repairs associated with traditional timber decking.

Our strong, slip resistant PVC boarding is weather-proof and low maintenance and is great for use in gardens, restaurant terracing, holiday home balconies and virtually every outdoor, underfoot project and every deck is perfectly co-ordinated to the design you choose and matching accessories provide the ideal finishing touches.

Our long-life, easy-care decks make a delightful addition to any outdoor space, a space that you will enjoy for years and years to come.



Safety features:

- Class 1Y fire rated
- Self extinguishing
- Steel reinforced
- BS Slip resistant
- BS Resilient
- BS Static Load Tested
- Water resistant

## Let there be light.



Open up views to the outdoors, while welcoming in daylight and fresh air with VELUX roof windows.



**There are so many benefits to VELUX roof windows, especially where space is at a premium.**

VELUX roof windows make it possible to maximise natural light indoors. Typically positioned overhead with the glass facing upwards, roof windows capture the sun's full light whilst also freeing up wall-space.

**Did you know roof windows can also change how a space feels?** Roof windows not only invite in daylight and fresh air, but their clever positioning also allows stale cooking smells and humidity to escape. Making them ideal for busy areas, kitchen spaces, and en suites. Enjoy a feeling of freshness and connection with nature by introducing VELUX roof windows into your holiday home.



More  
daylight

More  
fresh air

Transform  
your  
space

- Choose from **solar, electric, or manual** roof window operation.
- Explore the full range of **VELUX blinds and shutters** to enhance and personalise your holiday retreat.
- Enjoy **80 years** of roof window innovation, supported by a 10-year guarantee on roof windows and 3-year guarantee on electrical components and blinds.

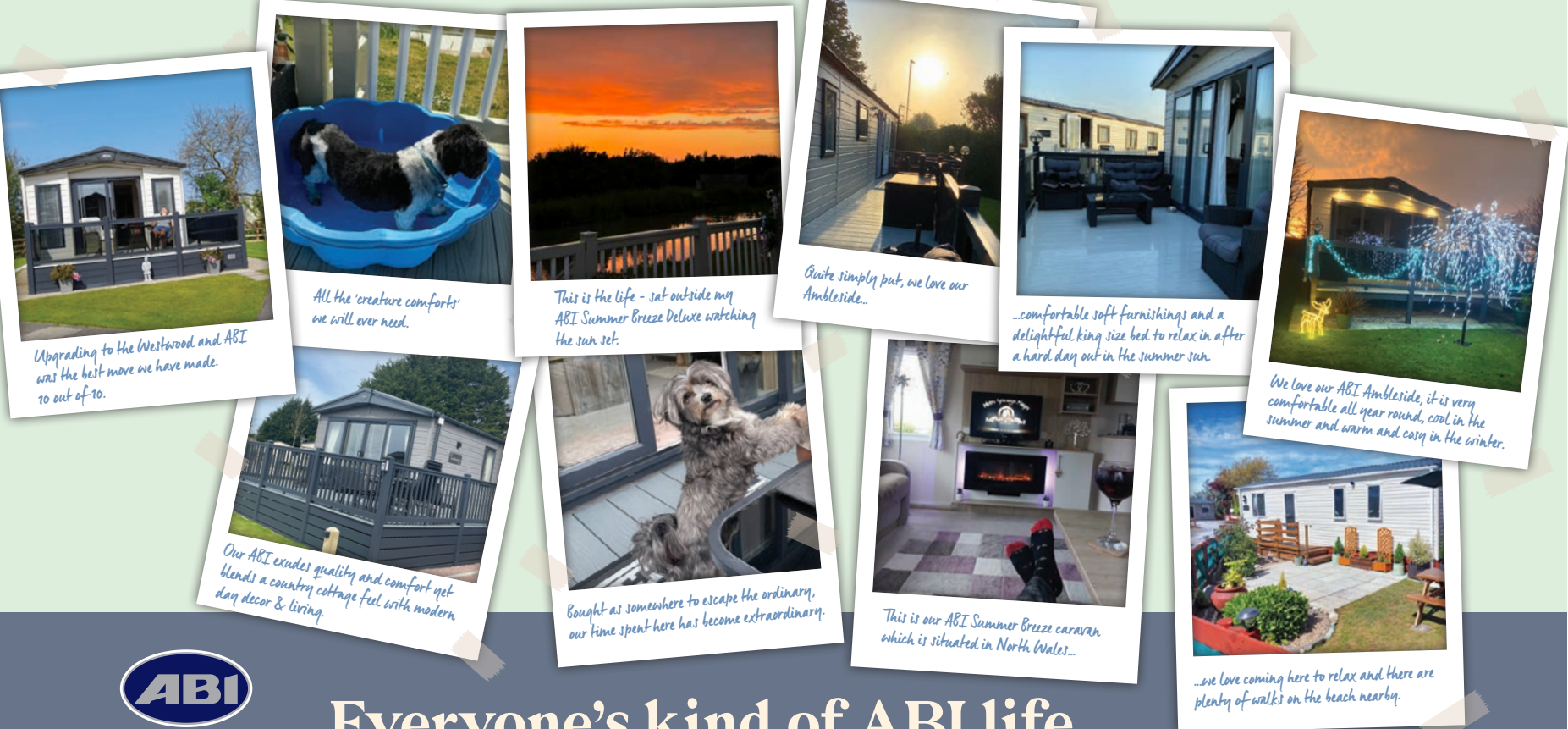
**Include a VELUX roof window in your future holiday home. Compatible with multiple ABI home styles.**

Do you need advice choosing your VELUX products? Contact the VELUX Advisory team for friendly advice and design recommendations.

**Tel: 01592 778883**

**Email: [daylight@velux.co.uk](mailto:daylight@velux.co.uk)**








Because the little things matter

## Everyone's kind of ABI life.

Creating special moments and lifelong memories, that's the ABI life. Capturing lively games nights or a sunset with a nice glass of red. Relive your favourite ABI memories, whether that's cuppas on the deck or bike rides by the beach.

Everyone's caravan life is different. But there is something for everyone with ABI. Why not share your holiday experiences with us? Post your ABI memories to our social channels: @ABIHolidayHomes.   



# UK Dealer Network

To experience our superior quality range of ABI holiday homes for yourself, simply find your nearest dealership from our trusted network.

Alternatively, visit us online at [www.abiuk.co.uk](http://www.abiuk.co.uk) to use our handy park and dealership locator. You'll also be able to see our full list of European dealerships too.

### Northern Ireland

**Golf Links Holiday Homes**  
Portrush, Co. Antrim  
BT56 8JQ  
028 7082 4644  
[golfinksholidayhomes.co.uk](http://golfinksholidayhomes.co.uk)

**Sandycove Holiday Homes**  
Ballywalter, Co. Down  
BT22 2LA  
028 4275 8200  
[sandycove.co.uk](http://sandycove.co.uk)

### Ireland

**Harry Farrell & Sons**  
Rathcoole, Dublin  
Ireland  
00353 1458 9410  
[harryfarrellsons.ie](http://harryfarrellsons.ie)

**Johnstons' Caravans**  
Letterkenny, Co. Donegal  
Ireland  
00353 74912 24 96  
[johnstonscaravans.ie](http://johnstonscaravans.ie)

**Cunninghams Holiday Homes**  
Ennis Road, Limerick  
Ireland  
00 353 61 451009  
00 353 86 2587910  
[www.cunninghams.ie](http://www.cunninghams.ie)

### Wales

**Broughton Leisure**  
Narberth  
Pembrokeshire  
SA68 0NY  
01834 891444  
[broughtonleisure.co.uk](http://broughtonleisure.co.uk)

**Lloyds Caravan & Lodge Sales**  
Towyn Rd  
Towyn  
Abergele  
North Wales  
LL22 9NW  
01745 832 050  
[lloydscaravans.co.uk](http://lloydscaravans.co.uk)

**Mon Caravans Ltd**  
Menai Bridge  
Anglesey  
LL59 5RW  
01248 711070  
[moncaravans.com](http://moncaravans.com)

**Salop Leisure Limited**  
Machynlleth  
SY20 8EG  
01654 705900  
[salopleisure.co.uk](http://salopleisure.co.uk)

### North East England

**Highfield Caravans**  
Bridlington  
YO16 4SJ  
01262 424242  
[highfield-caravans.co.uk](http://highfield-caravans.co.uk)

**Ideal Caravans**  
Langley Moor  
Durham  
DH7 8HA  
01913 780146  
[idealcaravans.co.uk](http://idealcaravans.co.uk)

**Ideal Caravans**  
Adderstone  
Northumberland  
NE70 7JU  
01913 786615  
[idealcaravans.co.uk](http://idealcaravans.co.uk)

### North West England

**Lake Coast and Dale Leisure**  
Carnforth  
Lancashire  
LA5 9RF  
01524 727950  
[lakecoastanddale.co.uk](http://lakecoastanddale.co.uk)

### East England

**M.T. McDonnell & Co**  
Kings Lynn  
Norfolk  
PE32 1QJ  
01553 636243  
[mcdonnellcaravans.co.uk](http://mcdonnellcaravans.co.uk)

**Orchard Caravans**  
Wells-next-the-sea  
NR23 1LT  
01328 710166  
[parklands-leisure.com](http://parklands-leisure.com)

**Seymours Caravan Sales**  
Skegness  
PE25 1RB  
01754 764270  
[seymourscaravans.co.uk](http://seymourscaravans.co.uk)

### South West England

**Surf Bay Leisure**  
Winkleigh, Devon  
EX19 8DW  
01837 680100  
[surfbayleisure.co.uk](http://surfbayleisure.co.uk)

**Surf Bay Leisure**  
Brean, Somerset  
TA8 2RP  
DH7 8HA  
01913 780146  
[surfbayleisure.co.uk](http://surfbayleisure.co.uk)

**Surf Bay Leisure**  
Bridport  
DT6 3EX  
01308 427444  
[surfbayleisure.co.uk](http://surfbayleisure.co.uk)

### Central England

**Pioneer Caravans**  
Peterborough  
PE6 7UB  
01733 222244  
[pioneercaravans.co.uk](http://pioneercaravans.co.uk)

**Salop Leisure Limited**  
Shrewsbury  
SY5 6QS  
01743 282400  
[salopleisure.co.uk](http://salopleisure.co.uk)

**Salop Leisure Limited**  
Stourport on Severn  
DY13 9QB  
01299 871361  
[salopleisure.co.uk](http://salopleisure.co.uk)



Please scan for  
price list  
information

The content of the brochure is as accurate as possible from information available at the time of going to print. ABI (UK) Ltd. reserves the right to alter specifications, prices and model ranges as materials and conditions are subject to availability and change, and therefore, ABI can accept no responsibility for discrepancies between this information and subsequent models. Illustrations do not reflect any individual holiday homes. All ABI holiday homes are built to comply with the relevant codes of practice required by the National Caravan Council Certification Scheme (EN1647) and therefore are designed for holiday use and not full time residential occupancy. Holiday homes built to BS3632 standard are for residential use. ABI (UK) Ltd. advise you to contact your nearest dealership to check features, options, specifications and availability prior to ordering.





Because the little things matter

Discover the new 2025 Collection  
or find your nearest dealership or park  
at [www.abiuk.co.uk](http://www.abiuk.co.uk)

To speak to us, please telephone  
**+44 (0) 1482 678000** or email us  
at [info@abiuk.co.uk](mailto:info@abiuk.co.uk)



To explore our holiday homes on interactive  
virtual tours, visit [www.abiuk.co.uk](http://www.abiuk.co.uk) or  
follow the link on this QR code